

# OCONEE COUNTY PLANNING COMMISSION

415 South Pine Street - Walhalla, SC



TEL (864) 638-4218 FAX (864) 638-4168

## AGENDA

6:00 pm, Thursday January 25th, 2018

Council Chambers - Oconee County administrative complex

1. Call to Order
2. Invocation by County Council Chaplain
3. Pledge of Allegiance
4. Approval of Minutes – January 11<sup>th</sup>, 2017
5. Public Comment for Agenda and Non-Agenda Items (3 minutes)
6. Staff Update
7. Discussion on February meeting schedule  
To include Vote and/or Action on matters brought up for discussion if required.
  - a. Discussion by Commission
  - b. Commission Recommendation
8. Discussion on Traffic Research  
To include Vote and/or Action on matters brought up for discussion, if required
  - a. Discussion by Commission
  - b. Commission Recommendation
9. Discussion on Goals Element  
To include Vote and/or Action on matters brought up for discussion, if required
  - a. Discussion by Commission
  - b. Commission Recommendation
10. Discussion on Prioritization of Planning Commission goals for 2018  
To include Vote and/or Action on matters brought up for discussion, if required
  - a. Discussion by Commission
  - b. Commission Recommendation
11. Old Business  
To include Vote and/or Action on matters brought up for discussion, if required
12. New Business  
To include Vote and/or Action on matters brought up for discussion, if required
13. Adjourn

Anyone wishing to submit written comments to the Planning Commission can send their comments to the Planning Department by mail or by emailing them to the email address below. Please Note: If you would like to receive a copy of the agenda via email please contact our office, or email us at [achapman@oconeesc.com](mailto:achapman@oconeesc.com).

# OCONEE COUNTY PLANNING COMMISSION

415 South Pine Street - Walhalla, SC



TEL (864) 638-4218 FAX (864) 638-4168

6:00 PM, Thursday January 11, 2018  
COUNCIL CHAMBERS  
OCONEE COUNTY ADMINISTRATIVE COMPLEX

## Members Present:

Mr. Kisker  
Mr. Johnson  
Mr. Vassey  
Mr. Pearson  
Mrs. McPhail  
Mr. Gramling  
Mrs. Lyles

Staff Present: David Root, County Attorney  
Adam Chapman, Planner I – Community Development

Media Present: None

## 1. Call to Order

Mr. Root called the meeting to order at 6:00 PM.

## 2. Invocation by County Council Chaplain

Mr. Root gave the invocation.

## 3. Pledge of Allegiance

## 4. Approval of Minutes

a. December 18, 2017, with corrections

Mrs. McPhail – Motion

Mr. Pearson – Second

## 5. Public Comment for Agenda and Non-Agenda Items (3 minutes)

No comments

## 6. Staff Updates

Mr. Chapman noted several of the large projects that are forthcoming in the County for 2018 and that he will keep the Commission up to date on any upcoming projects.

## 7. Vote for Chairperson and Vice-Chairperson

Mr. Root stated that the election can be done by verbal nomination or by ballot. The Planning Commission agreed upon the nomination method. Mr. Gramling nominated Mr. Kisker for

Chairperson, Mr. Johnson nominated Mr. Pearson for Chairperson. Mr. Root stated that Mr. Kisker was nominated first and if he received the majority for the votes he will be nominated, if Mr. Pearson receives the majority of the vote than he will be chairman. Mr. Gamling, Mrs. Lyles and Mr. Kisker raised hands and by "I" in favor of Mr. Kisker. Mr. Vassey, Mr. Johnson, Mrs. McPhail and Mr. Pearson voted for Mr. Pearson by a show of hands and by "I" in favor of Mr. Pearson as chairperson for 2018. Mr. Pearson led the meeting after being elected Chairman. Mr. Pearson asked for nominations for vice-chair, Mr. Johnson nominated Mr. Kisker for Vice-Chairperson, Mr. Kisker was elected as vice-chariman, 7-0 .

#### **8. Discussion on Comprehensive Plan Review**

Staff noted that the the Land Use Element, was originally completed by a consultant and that any updates possible were completed by the Planning department. Staff noted that the 2020 update of the Land Use Element could be done by a consultant or may be possible by staff. The Priority Investment Element will be brought back for discussion at a later date.

#### **9. Discussion on priority items for 2018**

Staff stated that there are two Items for this discussion in the backup material provided: Chapter 32.4 of the Oconee County Code of Ordinances which is the Planning Commission section of the ordinance and the Goals Element of the Comprehensive Plan. Mr. Kisker stated that Oconne County did away with the Capitol Projects Plan Advisory Board last year. Mrs. McPhail stated that the the Goals Element of the Comprehensive Plan should be brought back for further discussion by the Planning Comission.

#### **10. Discussion on staff Traffic Research**

Staff stated that information obtained from the National Highway Traffic Safety Administration that rural areas make up 19% of the population, but account for 49% of the traffic fatalities, nationally. Mr. Chapman also noted several other statistics about collisionsin in the state and county.

#### **11. Old Business**

None

#### **12. New Business**

None

#### **13. Adjourn**

Mrs. McPhail made a motion to adjourn at 6:36 pm

YOU'RE INVITED



OCONEE COUNTY'S  
SESQUICENTENNIAL CELEBRATION  
KICK OFF

5 P.M. MONDAY  
JANUARY 29, 2018

COUNTY COUNCIL CHAMBERS

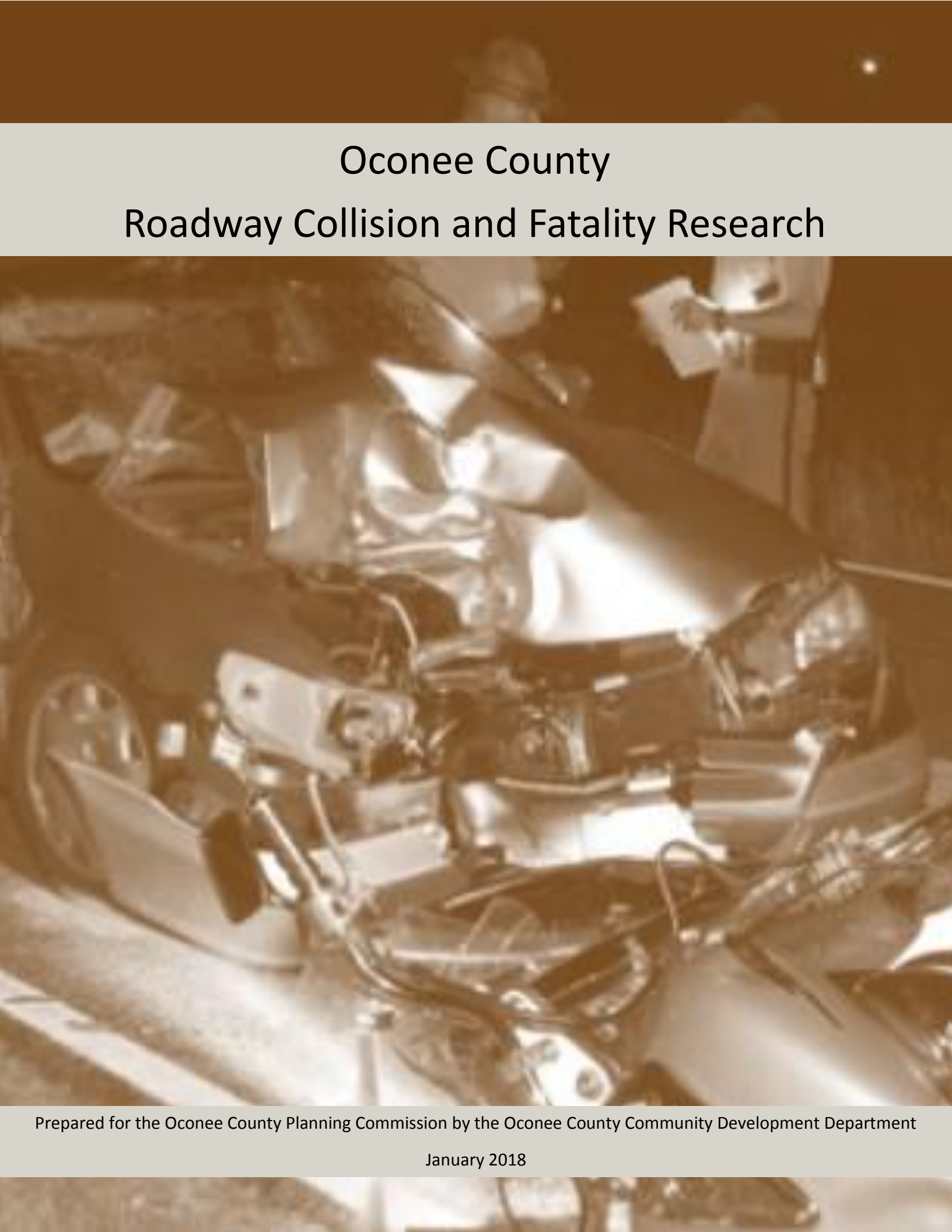
Sun	Mon	Tue	Wed	Thu	Fri	Sat
28	29	30	31	1	2	3
4	5 ↻ 6:00 PM - PLAN	6 ↻ 6:00 PM - CC	7	8 ↻ 5:30 PM - AERO	9	10
11	12 ↻ 6:30 PM - AG	13 9:00 AM - CONSER ↻ 5:30 PM - BUD ↻ 5:30 PM - REFLM	14	15	16	17
18	19 12:00 AM - COUNTY OFFICES CLOSED	20 ↻ 6:00 PM - CC	21	22 ↻ 12:00 PM - PRT	23	24
25	26 ↻ 6:00 PM - BZA	27	28	1	2	3
4	5	6	7	8	9	10

# OCONEE COUNTY PLANNING COMMISSION

415 South Pine Street - Walhalla, SC



TEL (864) 638-4218 FAX (864) 638-4168



# Oconee County Roadway Collision and Fatality Research

Prepared for the Oconee County Planning Commission by the Oconee County Community Development Department

January 2018

*Accidents don't just happen. They are caused.*

**Special thanks to :**

Lisa Simmering - Oconee County GIS

Karl Addis - Oconee County Coroner

Kenneth Long Jr. - South Carolina Department of Protective Services



## TABLE OF CONTENTS

<b>Directives</b>	4
<b>Executive Summary</b>	5
<b>Collision Statistics</b>	
Nationally	6
South Carolina	7
<b>Oconee County Collisions and Fatalities: By the numbers</b>	
Summary of Collisions and Fatalities in Oconee County 2012-2017	9
road fatalities: Oconee County	10
Top 5 reasons for Fatal Collisions in Oconee County 2012-2017	11
All reasons of Fatal Collisions in Oconee County 2012-2017	12
Road Collisions in Oconee County 2012-2017	13
Top 10 reasons of collisions in Oconee County from 2012-2017	14
All reasons for Road Collisions in Oconee County 2012-2017	15
Collision locations summary	16
Fatal Collision 2012-2017	17
All Collisions 2012-2017	18
Collision Heat Map 2012-2017	19
Collision Data Contours 2012-2017	20

## **DIRECTIVES**

**O**n April 24th, 2017 Oconee County Council directed the Planning Commission to discuss and create a plan for Corridor Planning . The topics of consideration regarding the Corridors were traffic flow, signage, pedestrian friendly areas and shading parking lots. After a joint County Council & Planning Commission meeting on October 24th, 2017 the Council instructed Planning Commission to focus on mitigating traffic and roadway safety. Other priorities were the creation of secondary routes for traffic. Other issues that could be looked at were design and sign standards. On December 18th, 2017 the Planning Commission tasked the Planning and Zoning Department to create a baseline of facts and statistics regarding identified Corridors within Oconee County. This document is the deliverable.

## **EXECUTIVE SUMMARY**

The act of driving, being a passenger or being on the roadway as a pedestrian in Oconee County has been fatal for over 400 people in the last 24 years. Between 2012 and 2017 there were almost 8,000 collisions that resulted in 81 fatalities and over 3,000 injuries. Highways 123/76 , 11 and 28 are the highways with the highest incidents of total collisions. Highways 123/76, 11 and 130 are the County's most fatal roadways. Driving under the influence and driving too fast for the conditions are the top causes of fatal wrecks in the County. Driving too fast for the conditions and failure to yield the right-of-way are the top causes of all collisions within the County. Driving too fast for conditions and driving under the influence are conditions which may be reduced utilizing a multi-department, multi-agency approach with short, medium and long range plans and goals.

## ROAD FATALITIES: NATIONALLY

**T**he National Highway Traffic Safety Administration (NHTSA) numbers, from 2015, indicate that drivers involved in accidents on rural roads are more likely to die than their urban counterparts. There are a number of factors from seat-belt use and alcohol consumption to time-of-day and speeding that are found in higher rates in rural crashes<sup>1</sup>. According to a NHTSA study “, the total value of societal harm from motor vehicle crashes in 2015 was \$836 billion”<sup>2</sup>.

### NHTSA Quick Facts

- In 2015 there were 32,166 fatal crashes that resulted in 35,092 traffic fatalities, nationally. That is four deaths every hour.
- Of the 35,092 fatalities 17,114 were in rural areas.
- 19% of the U.S. population lives in rural areas but rural fatalities accounted for 49% of all traffic fatalities in 2015.

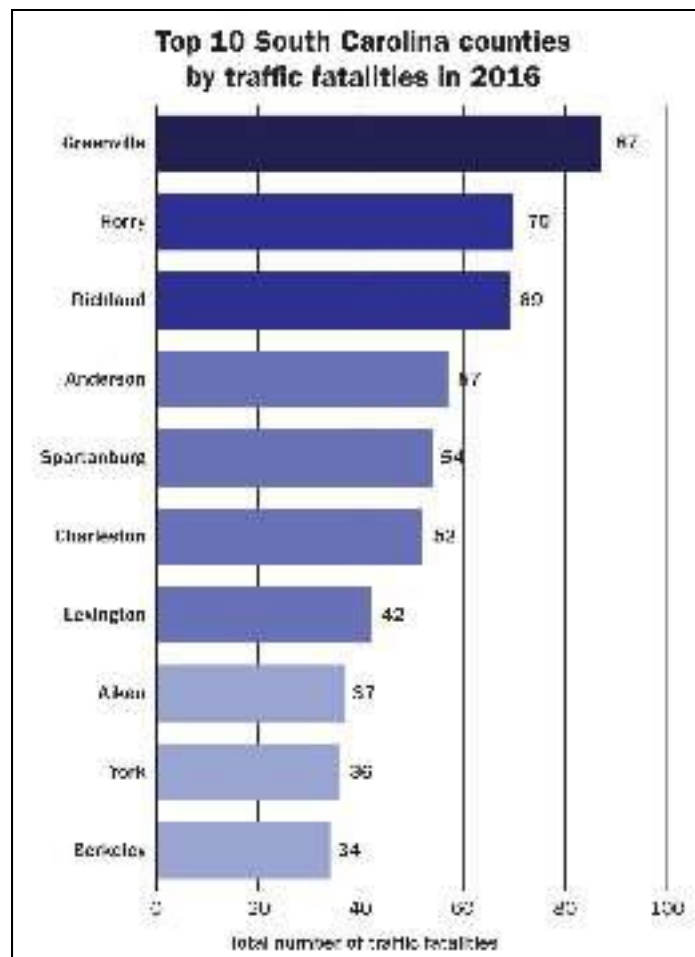
1.SOURCE : Geospatial Analysis of Rural Motor Vehicle Traffic Fatalities . NHTSA. Document DOT HS 811 196

2. DOT HS 812 013 2. Government Accession No. 3. Recipient’s Catalog No. 4. Title and Subtitle The Economic and Societal Impact of Motor Vehicle Crashes, 2010 (Revised) 5. Report May 2015

## ROAD FATALITIES: SOUTH CAROLINA

In 2015, South Carolina had the highest fatality rate in the nation for miles traveled. It was 53 percent higher than the national average, according to a series of articles by the Greenville Sun. There has been almost a 27 percent increase in road deaths in the past three years, from 2014-2016<sup>1</sup>.

In South Carolina there is a significant difference in the percentages of overall fatalities that occur in urban areas and the percentages, when immediate rural areas are also included. Highway safety planners seeking to reduce rural fatalities in these States should concentrate their resources in the rural areas adjoining urban areas<sup>2</sup>.



1: The Greenville News. (2017). *Are hazardous roads in South Carolina causing deaths?*. [online] Available at: <http://www.greenvilleonline.com/story/news/2017/03/04/south-carolina-roads/97909854/> [Accessed 21 Dec. 2017].



**OCONEE COUNTY COLLISIONS AND FATALITIES:  
BY THE NUMBERS**



## SUMMARY OF COLLISIONS AND FATALITIES IN OCONEE COUNTY 2012-2017

The table below highlights the damage to both people and property that collisions caused in Oconee County from 2012-2017. Almost 28% of all collisions result in injuries with almost 1% of all collisions resulting in fatalities. 2012 saw the most deaths in a single year for this timeframe with 22 persons killed. Over 3,000 people have been injured in this time frame with 2016 being the most injurious year with 626 persons injured.

### Oconee County Collisions 2012-2017 : Summary by Year

Year	Fatal Collision	Injury Collision	Property Damage Only	Total Collisions	Persons Killed	Persons Injured
2012	21	356	884	1,261	22	525
2013	3	343	908	1,254	3	463
2014	11	347	852	1,210	13	481
2015	13	352	1,046	1,411	13	498
2016	11	434	997	1,442	11	626
2017	17	335	961	1,313	19	494
<b>TOTALS</b>	<b>76</b>	<b>2167</b>	<b>5648</b>	<b>7891</b>	<b>81</b>	<b>3087</b>

## ROAD FATALITIES: OCONEE COUNTY

**B**etween 1993 and 2017, 407 people have lost their lives roads within Oconee County. The decreasing number of deaths per year is promising as the trend-line indicates <sup>1</sup>. Between 2012 and 2017 , 81 people have been killed in collisions in Oconee County.

Oconee County Traffic Deaths  
1993-2017



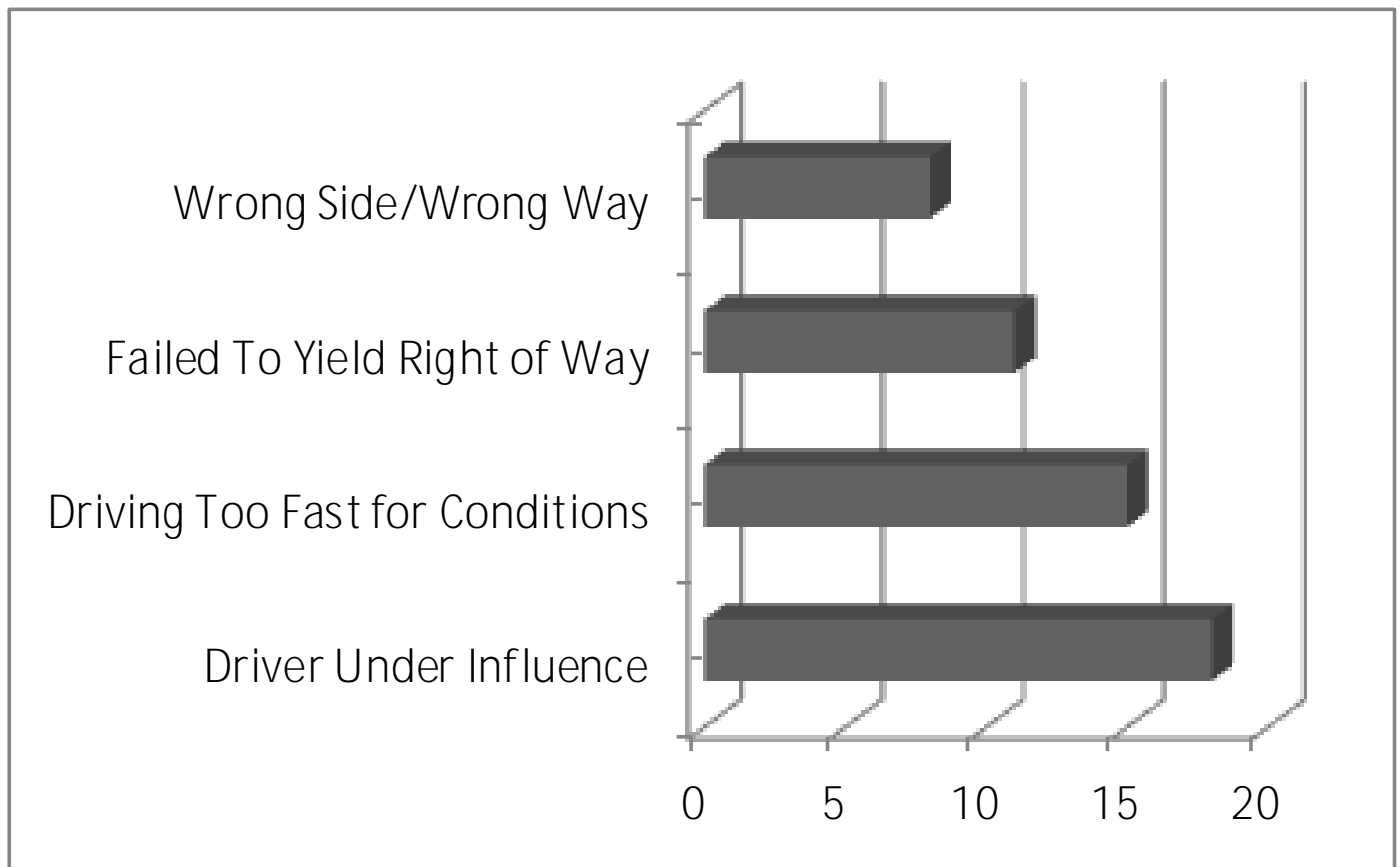
1. Source : Oconee County Coroner , Karl Addis



## Top 5 reasons for Fatal Collisions in Oconee County 2012-2017

The five year time period of 2012-2017 was chosen to model the current statistics based upon the most complete data sets available in a timely manner. Of the 81 people who were killed in roadway accidents in the 2012-2017 time frame, 25% were due to the driver being under the influence of drugs or alcohol. Driving too fast for the conditions accounted for 21% of the fatalities. Failure to yield right-of-way was 15% of the fatalities and driving on the wrong-side of the road accounted for 11% of the fatalities.

### Number and Cause of the five most lethal actions on Oconee County Roadways. 2012-2017.



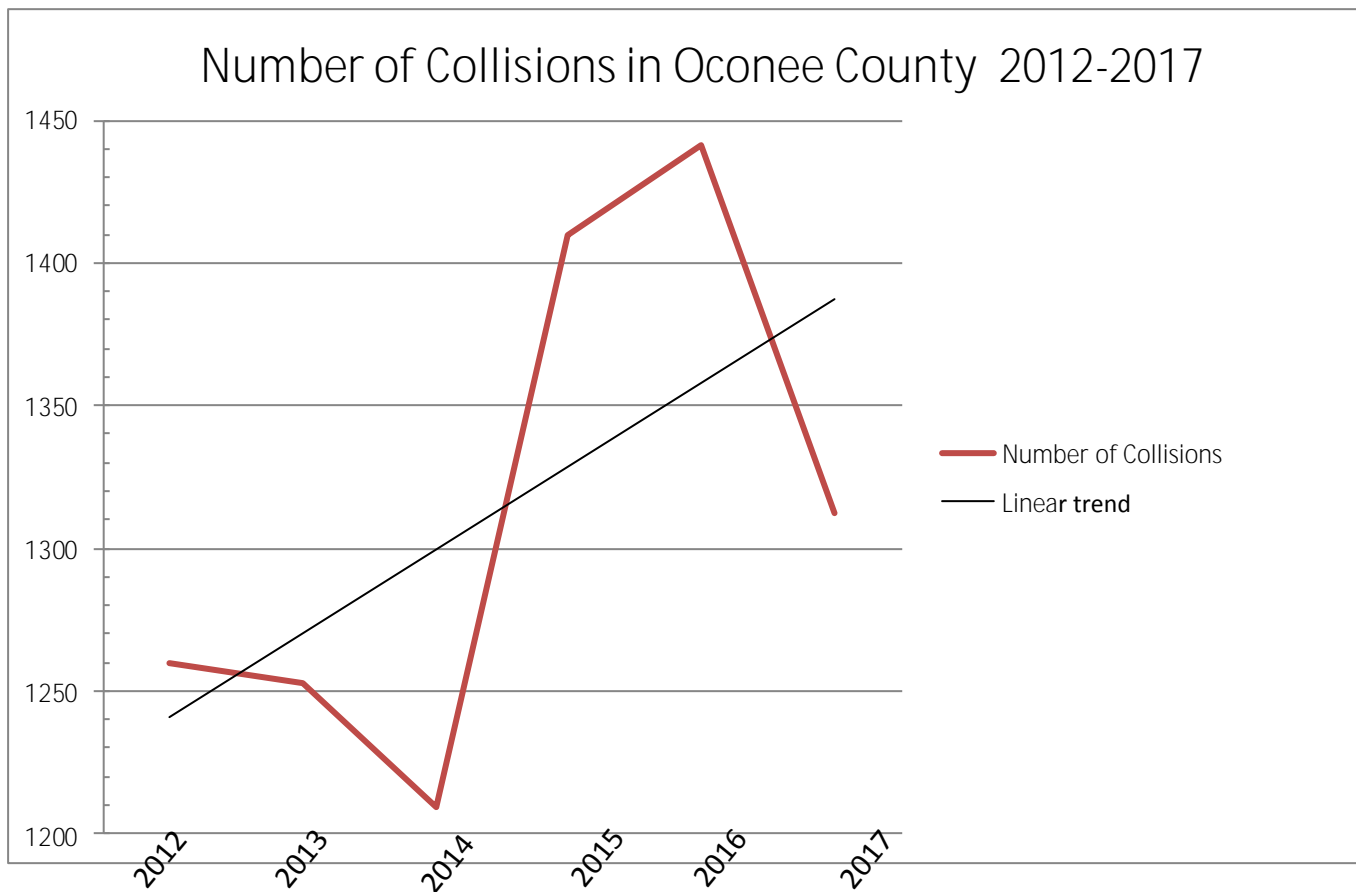
1. S.C. Department of Protective Services (SCDPS)

## ALL REASONS OF FATAL COLLISIONS IN OCONEE COUNTY 2012-2017

Driver Under Influence	18
Driving Too Fast for Conditions	15
Failed To Yield Right of Way	11
Wrong Side/Wrong Way	8
Made an Improper Turn	3
Lights	2
Non-Motorist Failed To Yield ROW	2
Other Improper Driver Action	2
Aggressive Operation of Vehicle	2
Disregarded Signs/Signals/Etc.	2
Exceeded Authorized Speed Limit	2
Improper Crossing	2
Improper Lane Usage/Change	2
Lying &/Or Illegally In Roadway	2
Medical Related	2
Non-Motorist Inattentive	2
Obstruction	2
Other Non-Motorist Factor	1
Unknown Driver Factor	1

## ROAD COLLISIONS IN OCONEE COUNTY 2012-2017

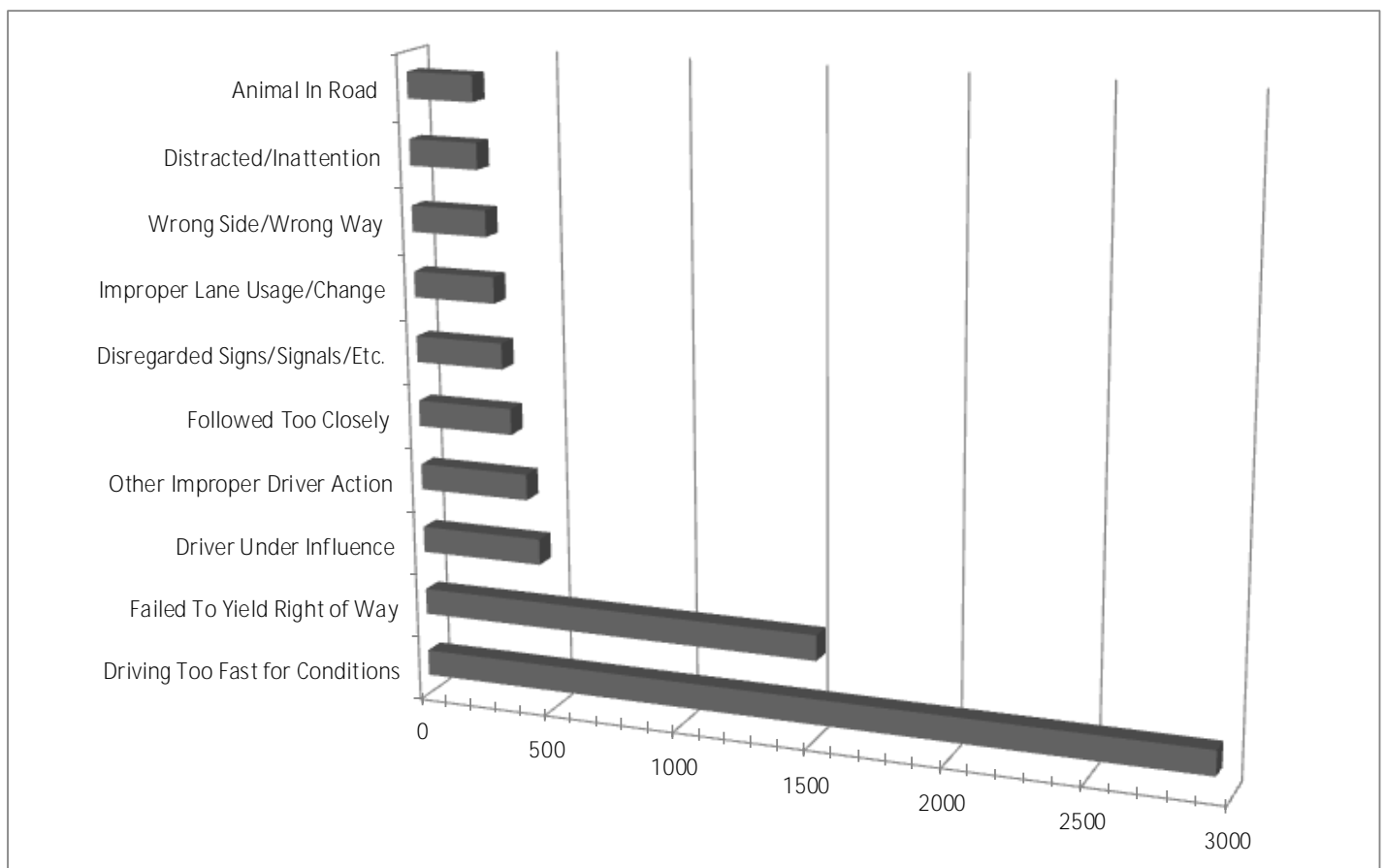
Between 2012 and 2017 there have been 7,891 collisions in Oconee County. The range of collision is fairly narrow , at only 232 collision difference between the lowest year , 2014, and the highest year , 2016. The trend line for this timeframe is showing an overall increase in the number of collisions. Less than 1% of the time are collisions fatal in Oconee County based upon the data from 2012-2017.



## TOP 10 REASONS FOR ROAD COLLISIONS IN OCONEE COUNTY 2012-2017

Of all the collisions from 2012-2017 there were 51 independent causative factors recorded. Driving too fast for the road conditions makes up 37% of all the accidents. Failure to yield right-of-way accounted for 19% of all collisions. Those two causes account for 56% of all the collisions the County has seen from 2012-2017. The other 8 of the top 10 reasons for road collisions in Oconee County account for approximately 36% of all the collisions.

### Top 10 reasons of collisions in Oconee County from 2012-2017



## ALL REASONS FOR ROAD COLLISIONS IN OCONEE COUNTY 2012-2017

Driving Too Fast for Conditions	2946	Vision Obscured (Within Unit)	10
Failed To Yield Right of Way	1519	Lying &/Or Illegally In Roadway	9
Driver Under Influence	462	Non-Motorist Failed To Yield ROW	8
Other Improper Driver Action	418	Other Environmental Factor	7
Followed Too Closely	363	Power Plant	7
Disregarded Signs/Signals/Etc.	335	Steering	7
Improper Lane Usage/Change	311	Lights	5
Wrong Side/Wrong Way	287	Road Surface Condition (i.e. Wet)	5
Distracted/Inattention	261	Truck Coupling	5
Animal In Road	252	Improper Crossing	3
Unknown Driver Factor	141	Obstruction	3
Made an Improper Turn	129	On Cell Phone	3
Aggressive Operation of Vehicle	77	Other Vehicle Defect	3
Medical Related	73	Glare	2
Obstruction In Roadway	36	Non-Motorist Inattentive	2
Ran Off Road	34	Not Visible (Dark Clothing)	2
Brakes	29	Other Person Under Influence	2
Tires/Wheels	27	Other Roadway Factor	2
Fatigued/Asleep	20	Work Zone (Constr/Maintenance/Util)	2
Exceeded Authorized Speed Limit	17	Darting	1
Swerving To Avoid Object	14	Non-Motorist Wrong Side Of Road	1
Debris	13	Other Non-Motorist Factor	1
Weather Condition	13	Texting	1
Cargo	10	Unknown Environmental Factor	1
Over-Correcting/Over-Steering	10	Unknown Vehicle Defect	1
		Windows/Windshield	1

## COLLISION LOCATIONS

By the numbers, US76/123 has the most collisions. S.C. Highway 11 is the most deadly and most injury causing roadway. US76/123 had 1,937 collisions total with 10 total fatalities which is 0.55% fatality rate. Highway 11 had 401 collisions with 14 fatalities which is 3.5% fatality rate. S.C. 28 had the second most collisions with 553. S.C. 130 and S.C. 24 are the next two most lethal highways in the County.

### 2012-2017 Top 15 Roadways for collisions in Oconee County

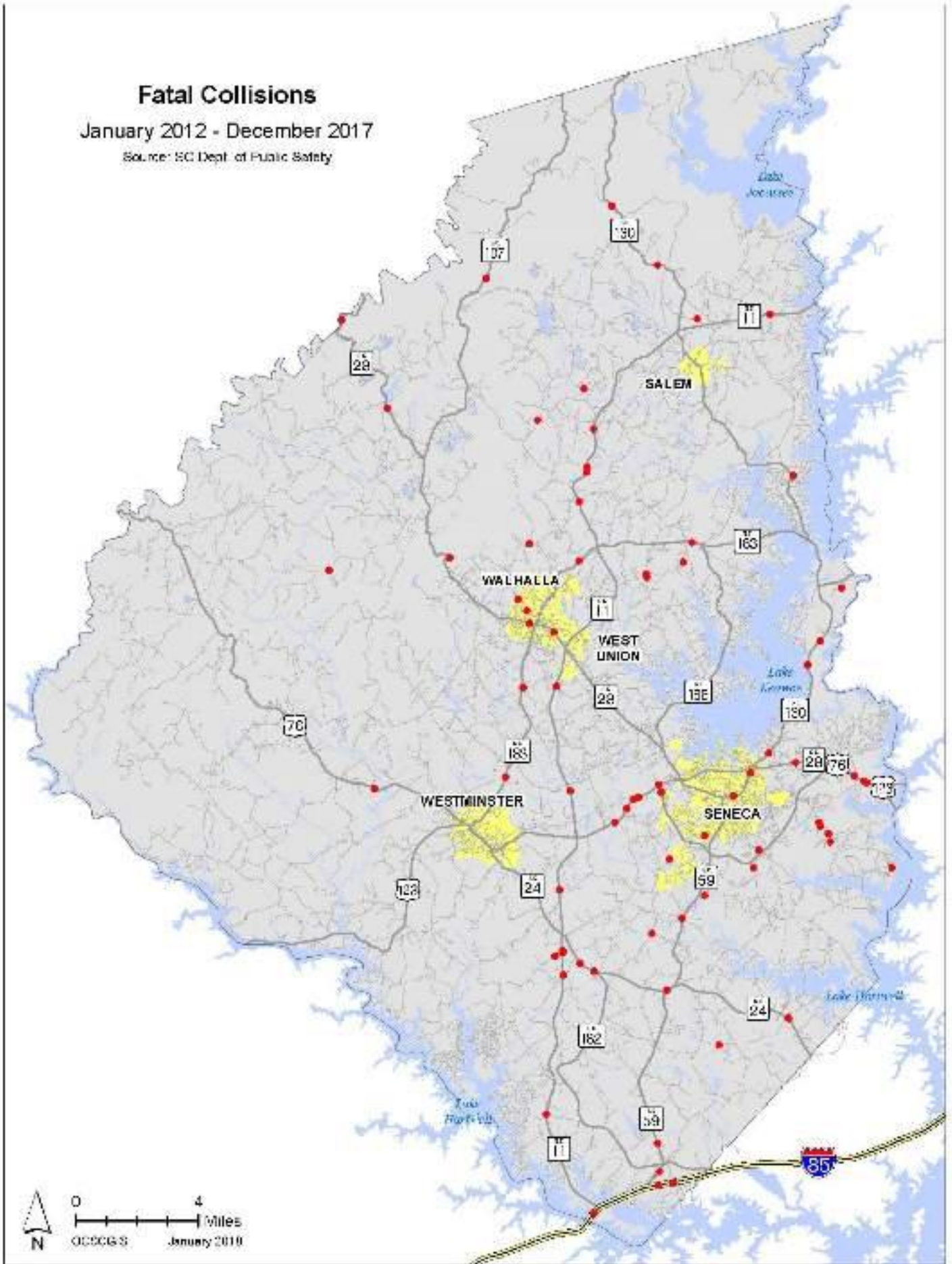
Roadway	Fatal Collision	Injury Collision	Property Damage Only Collision	Total Collisions	Persons Killed	Persons Injured
US Primary-76	9	447	1,337	1,793	10	644
SC Primary-28	5	133	415	553	5	180
SC Primary-11	12	118	271	401	14	195
SC Primary-130	8	101	251	360	8	160
Secondary-488	2	82	218	302	3	127
SC Primary-59	3	91	198	292	3	141
SC Primary-183	4	59	215	278	4	88
SC Primary-24	5	77	183	265	6	126
Interstate-85	3	31	175	209	3	52
Secondary-37	4	55	130	189	4	69
Secondary-21	2	48	95	145	2	67
US Primary-123	0	42	102	144	0	61
Secondary-50	0	29	83	112	0	39
Secondary-135	0	27	79	106	0	40
SC Primary-188	0	24	80	104	0	30

1. S.C. Department of Protective Services (SCDPS)

# Fatal Collisions

January 2012 - December 2017

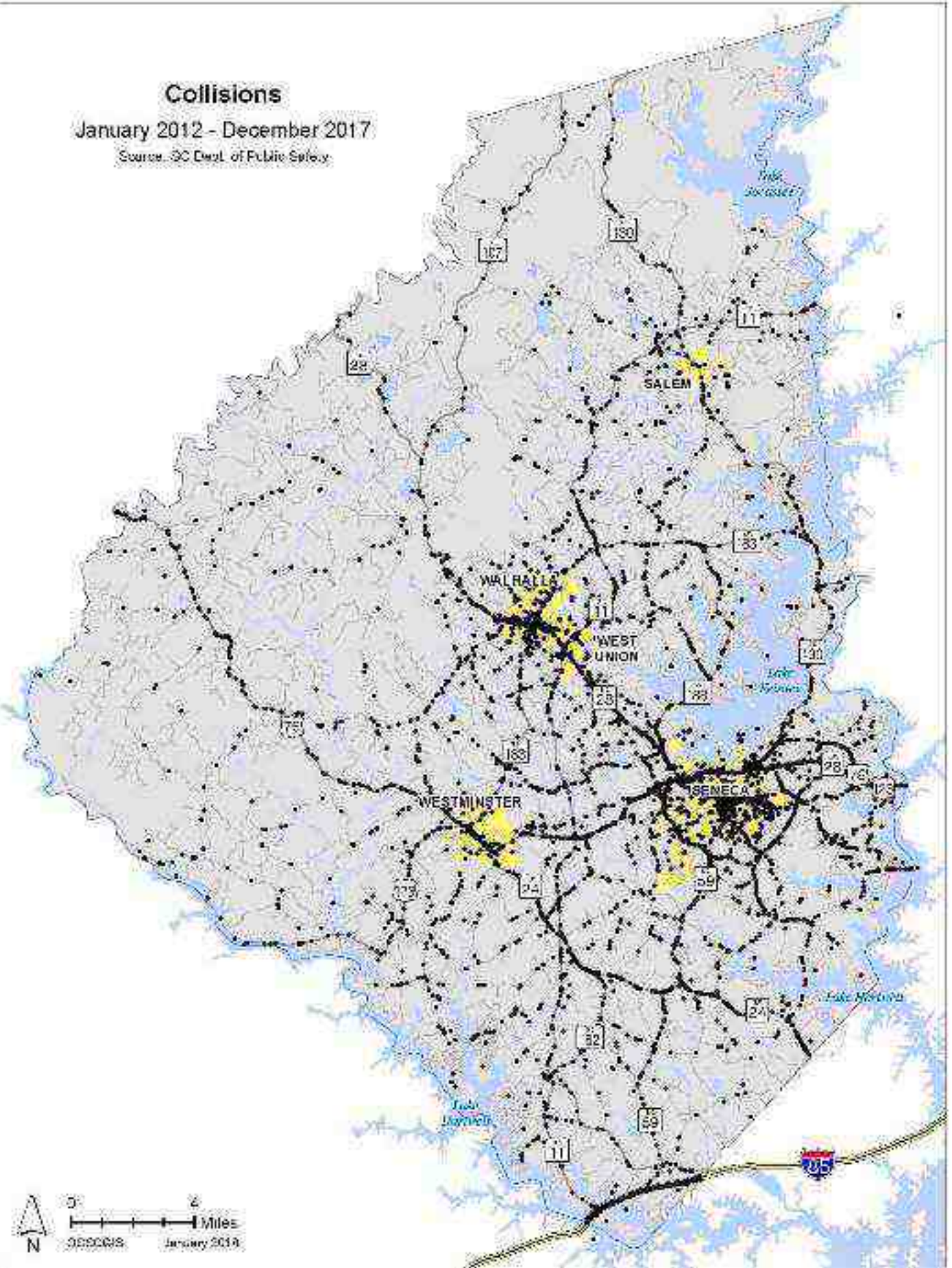
Source: SC Dept. of Public Safety



# Collisions

January 2012 - December 2017

Source: SC Dept. of Public Safety

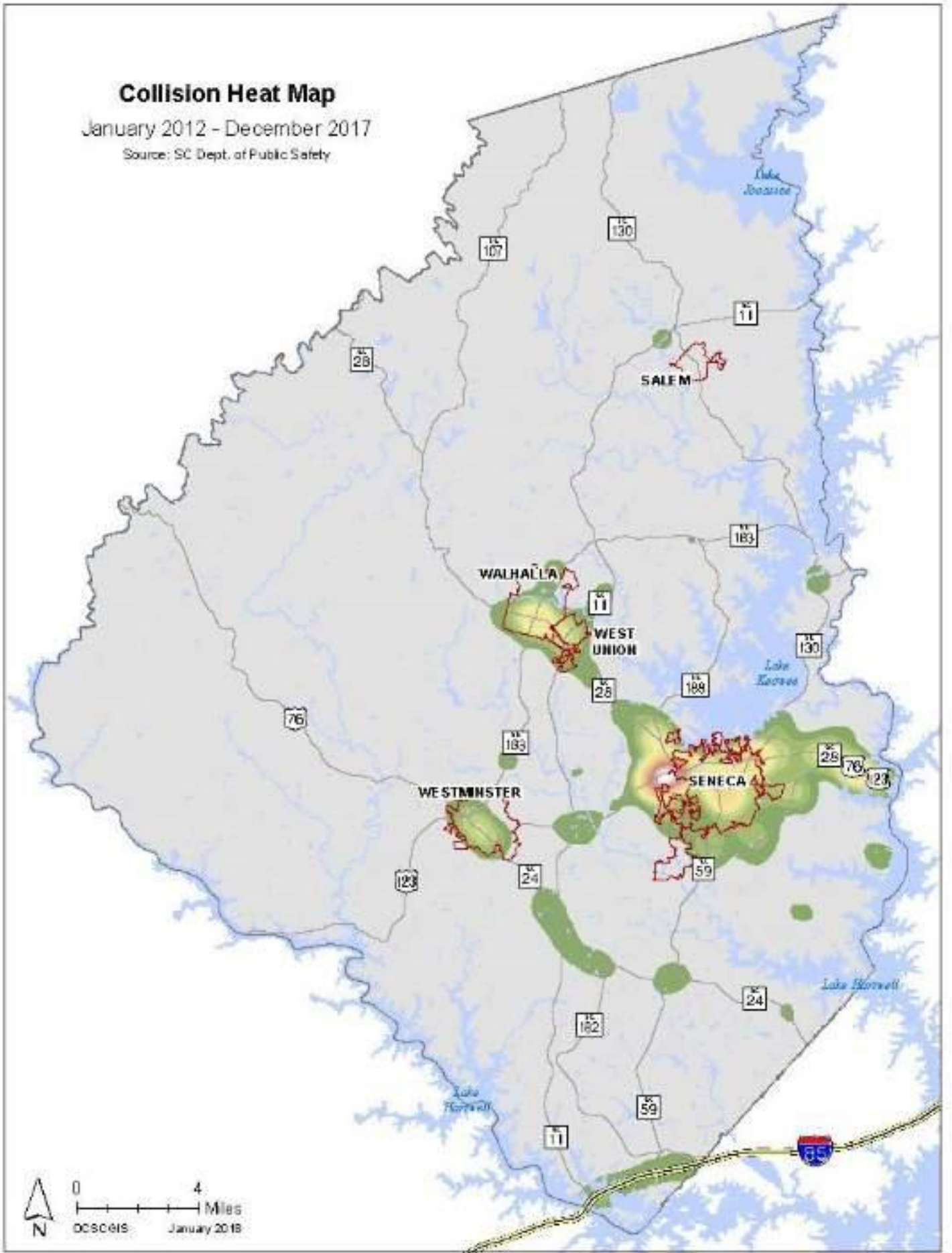




# Collision Heat Map

January 2012 - December 2017

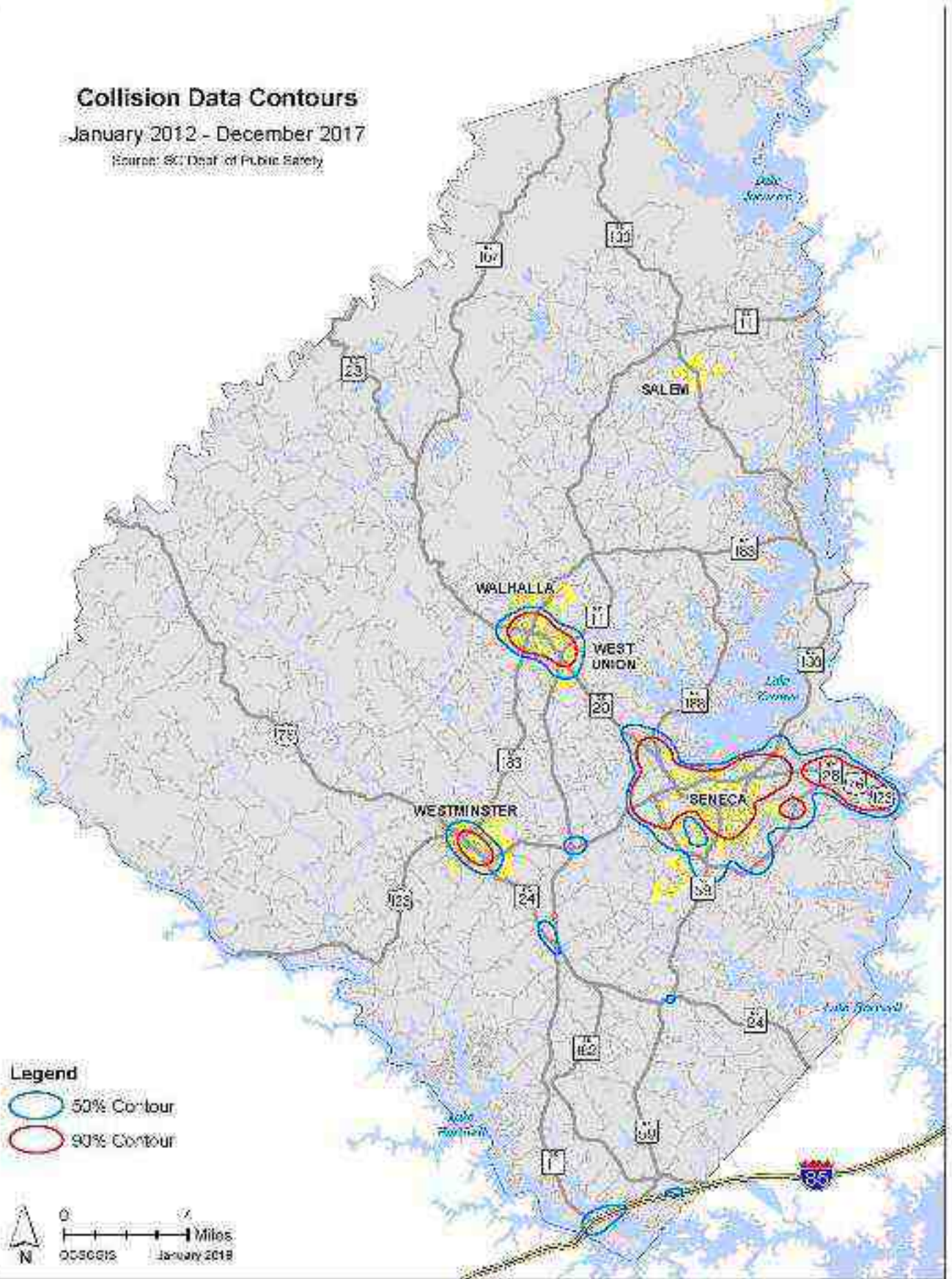
Source: SC Dept. of Public Safety




# Collision Data Contours

January 2012 - December 2017

Source: SC Dept. of Public Safety





# Oconee County Roadway Collision and Fatality Research



Oconee County Planning Commission

January 25th, 2018

## **Fatalities and Injuries**

- 1993-2017 = 400+ dead
  - 2012-2017 = 81 dead
- 2012-2017 = 3,000+ injured

## **Top Reasons for Fatalities**

- D.U.I.
- Driving too fast for road conditions

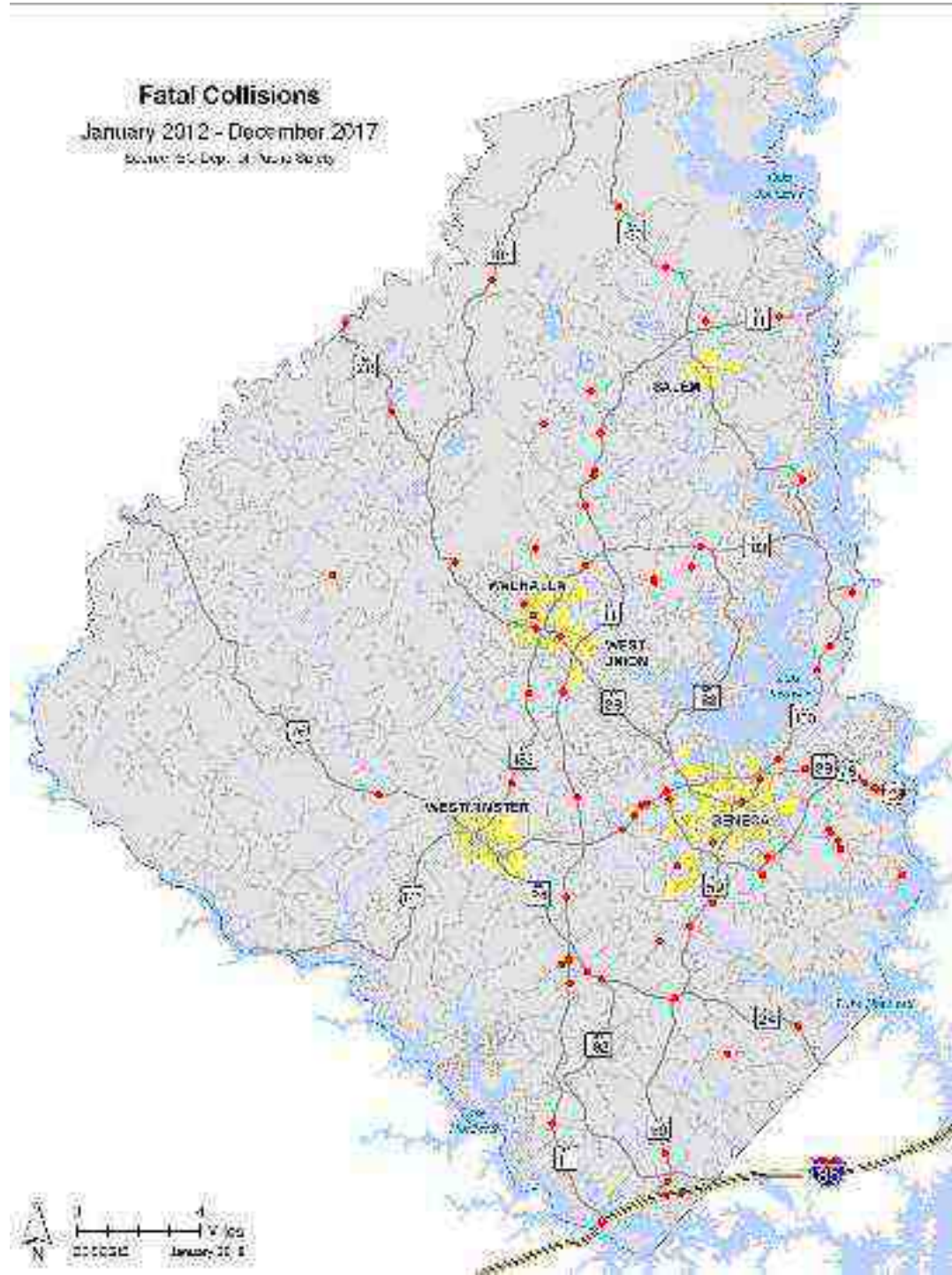
## **Top Reasons for non-fatal Collisions**

- Driving too fast for road conditions
  - Failure to yield right-of-way

2012-2017

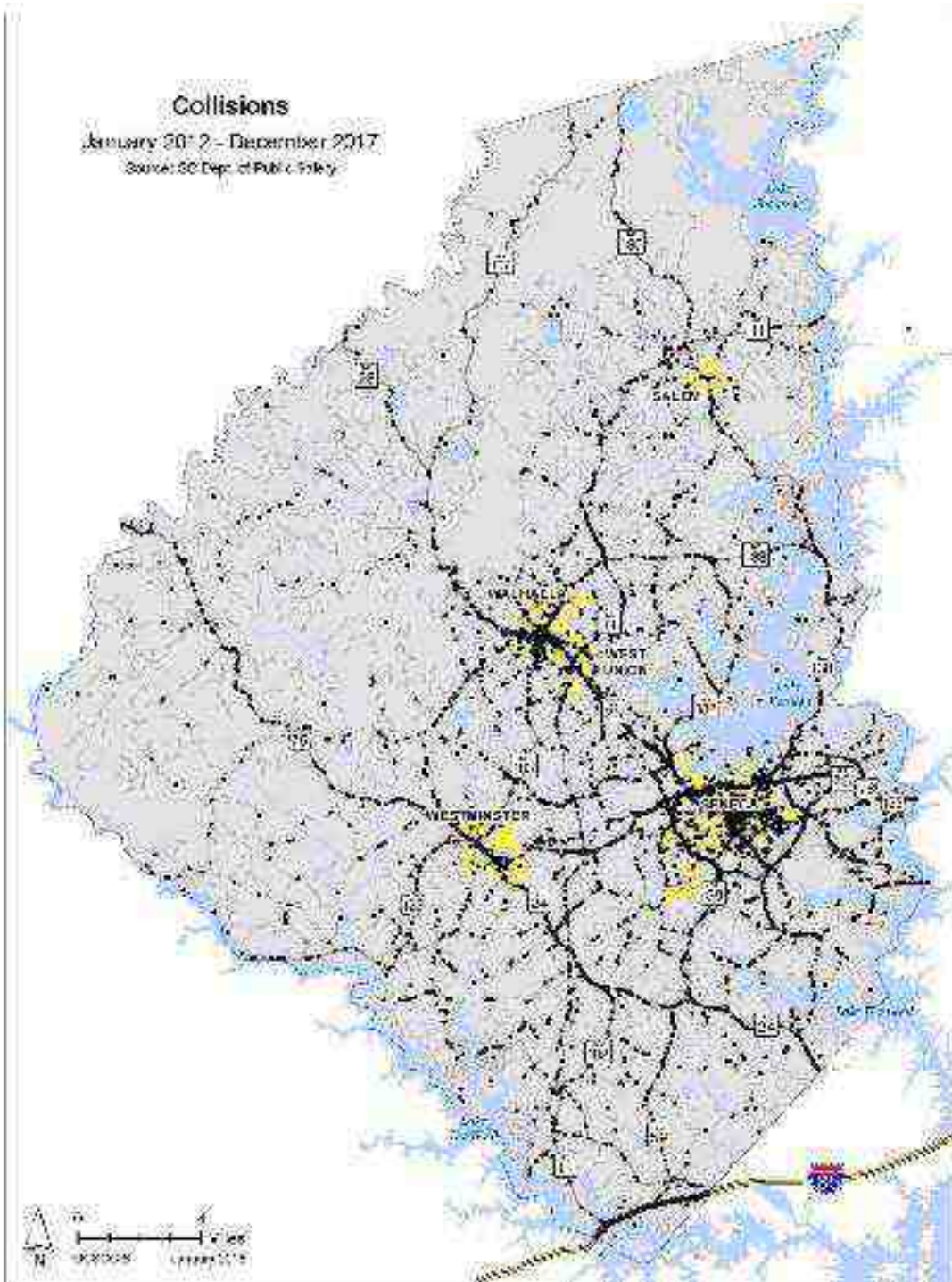
- Most Fatal Highway = Highway 11
- Most Injurious Highway = Highway 76/123
- Most Collisions = Highway 76/123

**Fatal Collisions**  
January 2012 - December 2017  
Source: NC Dept. of Transportation





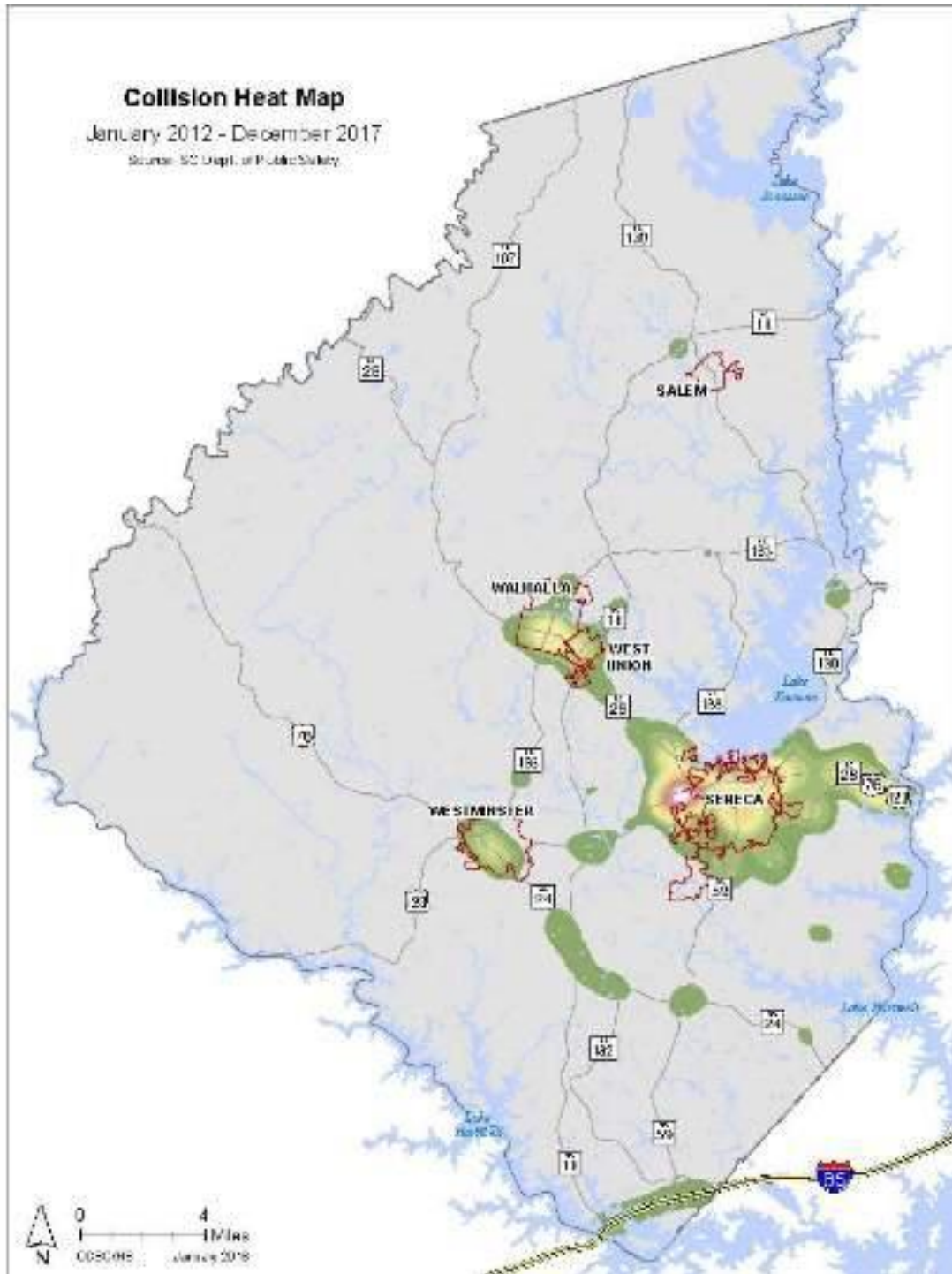
**Collisions**  
January 2017 - December 2017  
Source: SC Dept. of Public Safety



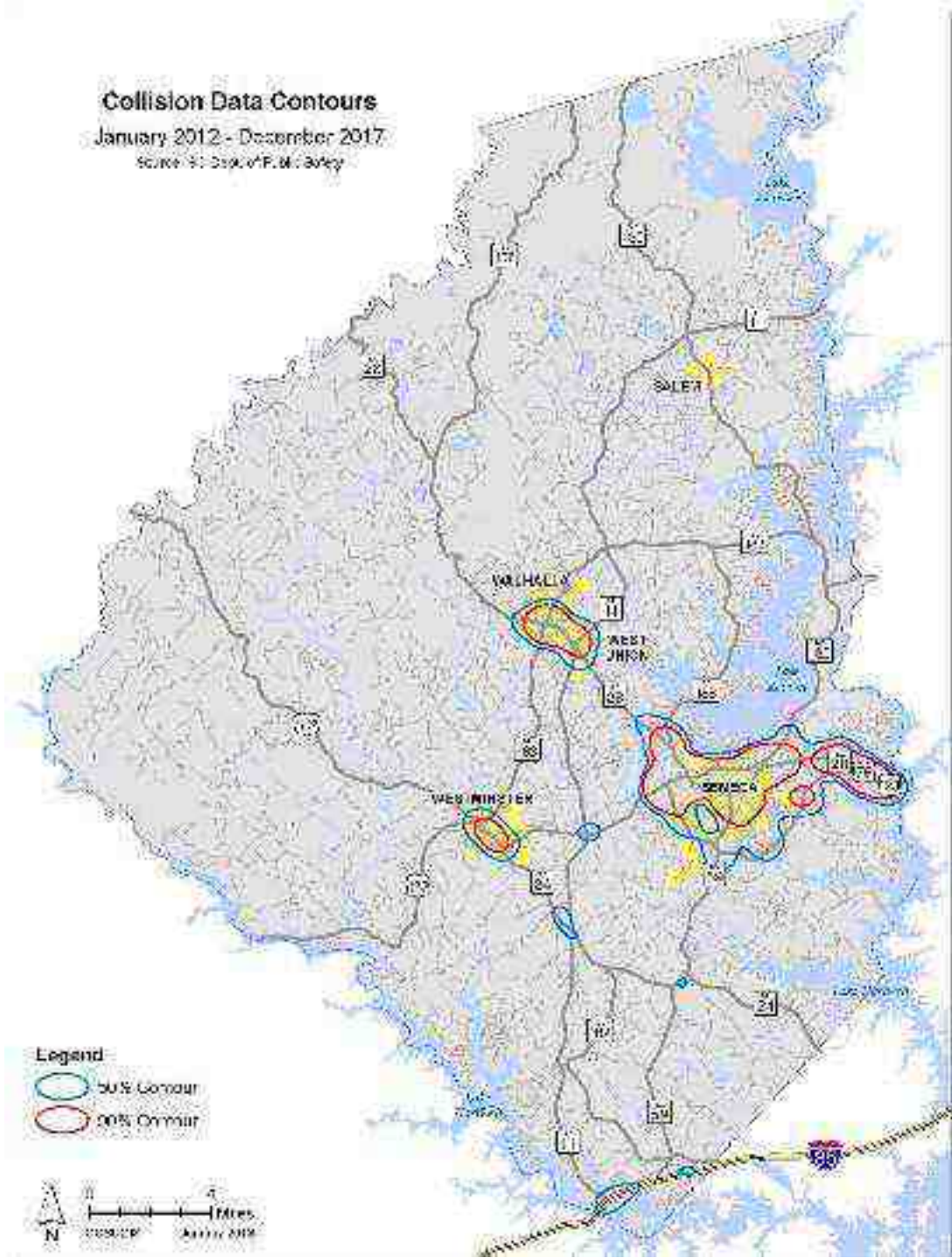
### Collision Heat Map

January 2012 - December 2017

Source: SC Dept. of Public Safety



**Collision Data Contours**  
January 2012 - December 2017  
Source: S. Dwyer/F. M. Bailey



# OCONEE COUNTY PLANNING COMMISSION

415 South Pine Street - Walhalla, SC



TEL (864) 638-4218 FAX (864) 638-4168



## Goals

This section contains the goals established by this Comprehensive Plan, which are based on the needs and desires set forth in the various elements. Each broad goal is supported by constituent objectives that address those identified needs, with appropriate strategies designed to ensure a successful outcome. It should be noted that specific objectives and strategies stemming from priorities established in more than one element have been appropriately stated to accomplish the desired results expressed in all elements (the elements to which each objective applies is noted). In addition, the county agencies deemed responsible for monitoring and facilitating the success of the effort are also named, as well as a timeline considered sufficient for completion.

## Goal # 1

# Preserve, protect, and enhance the quality and quantity of Oconee County's natural resources.

*Objective 1: Work to guarantee adequate water distribution systems for present and future economic development in Oconee County.*

Applicable Elements: Community Facilities; Economic Development

Strategies for Success	Agencies Responsible	Timeframe for Completion
1. Work to facilitate the establishment of a partnership with water providers aimed at expanding service into underserved unincorporated areas of the county.	Planning Commission; County Council	2012 Completed/ Ongoing Link to Seneca and Salem
2. Partner with municipalities in inventorying current condition of their water infrastructure systems to determine ability to accommodate future growth.	Infrastructure Advisory Commission; Planning Commission; County Council	Ongoing Not a County initiated project.
3. Work to develop agreements with water providers to coordinate with County on a plan provide for required fire protection for new development.	Emergency Services Commission; Planning Commission; County Council	2012 COMPLETED w/ Fire Station 10 at end of FY17

**Objective 2: Improve and expand wastewater treatment within Oconee County.**

Applicable Elements: Community Facilities; Economic Development

Strategies for Success	Agencies Responsible	Timeframe for Completion
1. Expand sewer service throughout areas designated by the Land Use Element as primary areas of development, while implementing appropriate limits needed to avoid negative impacts on sensitive areas.	Planning Commission; County Council	Ongoing Planning Commission to-do list
2. Implement requirements for all developer-initiated sewer expansions to be configured with sufficient capacity to allow existing and future affected property owners to connect to the proposed line.	Planning Commission; County Council	2012 <b>COMPLETE</b>
3. Work with neighboring counties when possible to establish regional efforts to expand sewer service into prime commercial and industrial locations.	Planning Commission; County Council	Ongoing Planning Commission to-do list
4. Partner with municipalities and Joint Regional Sewer Authority to coordinate efforts to provide sewer throughout high growth corridors.	Infrastructure Advisory Commission; Planning Commission; County Council	Ongoing Completed/ Ongoing with sewer South to Golden Corner. Seneca & County did 13.2 miles.
5. Establish partnership(s) with regional, state, and federal agencies to find funding sources for wastewater treatment needs.	Planning Commission; County Council	Ongoing TVA / ARC GRANTS
6. Study and establish increased access to sanitary boat dump stations on area lakes.	Parks, Recreation, Tourism Commission; Planning Commission; County Council	2013 <b>COMPLETE</b> Marinas at Keowee & Hartwell implementing

***Objective 3: Initiate efforts to develop the foundation of a county storm water management program prior to federal mandates, thereby allowing for the most efficient and cost-effective implementation possible in the event of designation.***

Applicable Elements: Population; Natural Resources; Economic Development; Land Use

<b>Strategies for Success</b>	<b>Agencies Responsible</b>	<b>Timeframe for Completion</b>
1. Study and evaluate options available to jurisdictions designated by EPA to establish storm water management programs, identifying those attributes desirable for an Oconee County program.	Planning Commission; County Council	2011 With next Census Federal Regulations will be required.
<del>2. Work with state and federal agencies as required to create necessary components of storm water program, when possible, through a phased approach that will lessen impact of meeting mandates.</del>	<del>Planning Commission; County Council</del>	2011 "As Required"
3. Support regional efforts to protect watersheds.	Planning Commission; County Council	Ongoing This is activity falls under the jurisdiction of SCDHEC



***Objective 4: Establish a program of managing both water quantity and water quality throughout the county that will ensure efficient utilization, and appropriate conservation, of our greatest natural resource.***

Applicable Elements: Population; Natural Resources; Economic Development; Land Use

Strategies for Success	Agencies Responsible	Timeframe for Completion
1. <del>Work with state and federal agencies to establish a comprehensive network of water monitoring stations in Oconee County watersheds.</del>	Planning Commission; County Council	2014 <b>SCDHEC jurisdiction</b>
2. Establish accurate 7Q10 rating for all water basins in Oconee County.	Planning Commission; County Council	2014 <b>Was created as a reaction to ATL proposed withdrawals from the Chattooga. Not done.</b>
3. Develop a county-wide water usage plan that defines water conservation practices for both normal and drought conditions, and insures that all users share equally in restrictions during drought conditions.	Planning Commission; County Council	2012 <b>Water Commission was created. No plans adopted.</b>
4. Partner with both public and private entities to develop a county-wide education program designed to promote water conservation.	Planning Commission; County Council	2012 <b>Planning Commission to-do list</b>
5. Study and evaluate the impact of Oconee County’s water supply on ISO ratings, and the resulting cost of fire insurance, seeking to identify opportunities for better ratings.	Emergency Services Commission; Planning Commission; County Council	2012 <b>COMPLETE</b>
6. Partner with adjacent jurisdictions on comprehensive water studies detailing availability from all sources and usages/outflows.	Planning Commission; County Council	Ongoing <b>Planning Commission to-do list</b>

***Objective 5: Preserve, protect and enhance Oconee County’s environmentally sensitive lands, unique scenic views, agrarian landscapes, and topographic features.***

Applicable Elements: Natural Resources; Land Use

<b>Strategies for Success</b>	<b>Agencies Responsible</b>	<b>Timeframe for Completion</b>
1. Encourage use of “Best Management Practices” in farming and forestry operations.	Planning Commission; Soil & Water Conservation Commission’s ;County Council	Ongoing Soil & Water Conservation Commission’s area of responsibility.
2. Work to partner with public and private entities in developing a countywide greenway system that will offer opportunities for nature-based recreation in areas where few currently exist.	Planning Commission; County Council	2014 Ongoing
3. Encourage and support collaboration between landowners and public and private agencies in the development of ecologically and economically sound plans for preservation and restoration of forests and farmland.	Planning Commission; County Council	Ongoing Establishment of OC Conservation Bank

***Objective 6: Promote partnerships and voluntary conservation easements to preserve significant lands and scenic areas under pressure.***

Applicable Elements: Natural Resources; Land Use; Priority Investment

<b>Strategies for Success</b>	<b>Agencies Responsible</b>	<b>Timeframe for Completion</b>
1. Establish a county conservation bank to provide for the transfer of development rights and/or conservation easements to protect rural lands, sensitive areas, and significant natural resources.	County Council	2011 COMPLETE / ONGOING
2. Identify and establish various funding sources for the county conservation bank identified above; these may include grants, corporate gifts, a percentage of development permit fees, and annual revenue designations.	County Council	2011 COMPLETE / ONGOING

3. Provide appropriate assistance from county departments and agencies in efforts to identify and preserve historic structures, significant lands, and scenic areas.	Planning Commission; County Council	Ongoing/ <b>COMPLETE</b> <b>/ ONGOING</b>
--	--	--

## Goal #2

### **Identify, develop and utilize all tools and funding sources necessary to meet the present and future economic development needs of Oconee County.**

*Objective 1: Continue support of a comprehensive planning process to insure that the citizens of Oconee County possess accurate inventories and analyses of existing county conditions, and the opportunity to better manage anticipated future conditions.*

Applicable Elements: Population; Natural Resources; Cultural; Housing; Community Facilities; Economic Development; Land Use; Transportation; Priority Investment

<b>Strategies for Success</b>	<b>Agencies Responsible</b>	<b>Timeframe for Completion</b>
1. Review and update the various components of the Oconee County Comprehensive Plan as needed, not restricted to the minimum time periods established in state regulations.	Planning Commission; County Council	Ongoing <b>ONGOING</b>
2. Improve communication and cooperation between the County and municipalities, state and federal agencies, and other public and private entities.	Planning Commission; County Council	Ongoing <b>ONGOING</b> <b>Improvements have been made</b>

***Objective 2: Review, update, and adopt the Infrastructure Master Plan.***

Applicable Elements: Economic Development; Priority Investment

Strategies for Success	Agencies Responsible	Timeframe for Completion
1. Review and update the Infrastructure Master Plan, insuring that those steps identified provide for the future growth in the county and limit damage to sensitive areas and resources.	Economic Development Commission; Planning Commission; County Council	2011 Planning Commission to-do list
2. Adopt and implement the Infrastructure Master Plan.	County Council	2011 Infrastructure Master Plan Created NOT Adopted
3. Utilizing the elements of the Infrastructure Master Plan as a guide, work to establish a sustainable infrastructure upgrade and maintenance program supported by a steady revenue stream.	Economic Development Commission; Planning Commission; County Council	Ongoing No adopted plan. County cannot control State / City Roads

***Objective 3: Develop and implement an effective Capital Projects Program that provides the highest level of service and facilities for Oconee County’s citizens.***

Applicable Elements: Population; Community Facilities; Priority Investment

Strategies for Success	Agencies Responsible	Timeframe for Completion
1 Seek partnerships with other agencies, municipalities, and private industry to eliminate unnecessary redundancy in facilities and services.	Planning Commission; County Council	<b>Ongoing</b> Building Codes is “one-stop” shop for power and sewer. County shared planner. Health Services Offices partnered with Clemson. DMV in County Treasurer’s Office.
2. Maintain a Capital Projects Plan with specifics on estimated costs for upgrades and replacements, with timeframes for getting new estimates.	Planning Commission; County Council	Ongoing Planning Commission to-do list

***Objective 4: Explore and evaluate alternative methods of obtaining revenue and grant monies to fund capital improvements and new infrastructure.***

Applicable Elements: Community Facilities; Economic Development; Transportation; Priority Investment

<b>Strategies for Success</b>	<b>Agencies Responsible</b>	<b>Timeframe for Completion</b>
1. Identify and work to establish alternative revenue sources such as special tax districts and local option sales taxes.	Planning Commission; County Council	Ongoing
2. Adopt appropriate development impact fees to offset some of the cost of infrastructure and public services.	Planning Commission; County Council	2012 Planning Commission to-do list
3. Broaden utilization of grant monies to assist with capital projects.	County Council	Ongoing
4. Seek to establish public-private partnerships, user-based fees, and other revenue sources to help fund infrastructure.	County Council	Ongoing
5. Work with state and federal leaders to change formulas for state and federal funding that use Census figures that fail to account for the large percentage of non-resident property owners.	County Council	Ongoing Planning Commission to-do list

***Objective 5: Create and/or update plans for specific priorities.***

Applicable Elements: Population; Natural Resources; Cultural; Housing; Community Facilities; Economic Development; Land Use; Transportation; Priority Investment

<b>Strategies for Success</b>	<b>Agencies Responsible</b>	<b>Timeframe for Completion</b>
1. Review and update the Community Facilities Plan, amending it to reflect the impact of recent growth and the needs of the aging population.	Planning Commission; County Council	2012 Planning Commission to-do list
2. Partner with municipalities to develop coordinated 5- and 10- year Economic Development Plans.	Economic Development Commission; Planning Commission; County Council	2014 ONGOING Propex facility, E.D. plans, Walhalla Industrial & Tech Park
3 Update and adopt the 2004 Infrastructure Master Plan.	Economic Development Commission; <del>Planning Commission</del> ; County Council	2011 Falls outside the purview of Planning Commission.
4. Evaluate, amend, and implement recreation plans,	Parks, Recreation and	Ongoing

as necessary.	Tourism Commission; County Council	Recreation Task Force
---------------	---------------------------------------	-----------------------

***Objective 6: Complete and properly maintain Oconee County’s Geographic Information System (GIS).***

Applicable Elements: Population; Natural Resources; Cultural; Housing; Community Facilities; Economic Development; Land Use; Transportation; Priority Investment

Strategies for Success	Agencies Responsible	Timeframe for Completion
1. Complete digitization of parcel data, and implementation and integration of Tax Assessor’s CAMA system.	County Council	2011 COMPLETE
2. Expand public access to GIS, emphasizing the accuracy of data collected, usability of mapping website, and the maintenance of data collected.	County Council	Ongoing COMPLETE
3. Establish and maintain a GIS administrative structure that not only promotes efficient service for county agencies, but also serves the mapping needs other public and private entities.	County Council	2010 COMPLETE

***Objective 7: Continue to actively promote the recruitment of employment opportunities that provide the best lifestyle for all Oconee residents.***

Applicable Elements: Population; Economic Development

Strategies for Success	Agencies Responsible	Timeframe for Completion
1. Work with state and federal agencies to attract agribusiness-related grants and revenue sources, and support efforts to establish pilot programs related to new agricultural technologies and products.	Planning Commission; County Council	Ongoing Oakway School & FARM Center
2. Provide appropriate assistance to expand non-traditional and specialty agribusiness opportunities.	County Council	Ongoing Agriculture Advisory Board
3. Continue partnerships in regional economic development recruitment efforts.	Economic Development Commission; Planning Commission; County Council	Ongoing OEA and Business Partnerships
4. Partner with area colleges and universities to expand local technical training facilities.	Economic Development	Ongoing Tri-County Tech at

	Commission; Planning Commission; County Council	OITP
5. Develop sustainable funding mechanism to maintain availability of structures adequate for the needs of modern industry; this may include, but is not limited to, expansion of revenues designated to economic development, public-private partnerships, and grants.	Economic Development Commission; County Council	Ongoing Santee-Cooper Loan
6. Ensure that all governmental actions be considerate of racial, religious, and cultural groups that comprise Oconee County's population.	County Council	Ongoing

## Goal #3

**Establish an efficient, equitable, and mutually compatible distribution of land uses that complements Oconee County’s traditionally rural lifestyle, yet supports sustainable economic development, protects the environment, and manages future growth and changes.**

*Objective 1: Encourage development in a way that protects and preserves our natural resources.*

Applicable Elements: Population; Natural Resources; Cultural; Housing; Community Facilities; Economic Development; Land Use; Transportation; Priority Investment

Strategies for Success	Agencies Responsible	Timeframe for Completion
1. Review and update existing land use regulations as needed, to facilitate development that preserves forests, prime agricultural lands, sensitive areas, and natural resources.	Planning Commission; County Council	Ongoing
2. Develop reasonable regulations regarding the development of steep slope areas.	Planning Commission; County Council	2011 ONGOING/ Planning Commission to-do list
3. Establish green space/open space requirements for new developments.	Planning Commission; County Council	2011 Planning Commission to-do list
4. Establish strategies and adopt measures necessary to create the framework for the efficient implementation of erosion and sediment control regulations.	Planning Commission; County Council	2011 ONGOING
5. Support efforts to educate public in the use of best management practices for construction sites.	Planning Commission; County Council	Ongoing Located in I.B.C.
6. Consider, and possibly adopt, regulatory components of a program to expand the natural vegetative buffer requirement to all lake front properties; this may or may not include provisions for increasing the size of the buffer to 50 feet.	Planning Commission; County Council	2013 Planning Commission to-do list
7. Establish a mitigation program for littered and unsafe properties, utilizing funding from alternative funding sources such as state and federal grants, or possibly specialized tax levies.	Planning Commission; County Council	2012 ONGOING Litter control Ordinances and Officer



***Objective 2: Manage development in a manner that ensures our natural resources and lifestyle serve to enhance a sustainable economic prosperity.***

Applicable Elements: Population; Natural Resources; Cultural; Housing; Community Facilities; Economic Development; Land Use; Transportation; Priority Investment

Strategies for Success	Agencies Responsible	Timeframe for Completion
1. Utilize the countywide zoning process to plan appropriate development and protect special areas through rezonings and overlays.	Planning Commission; County Council	Ongoing Planning Commission to-do list
2. Work to manage urban/suburban development in Oconee County to insure adequate infrastructure is in place to support balanced growth in primary growth areas, while limiting urban sprawl and protecting those areas deemed special.	Planning Commission; County Council	Ongoing
3. Identify potential county industrial sites in appropriate areas, and work with public and private entities to secure funding to purchase select properties for potential projects within prime industrial areas.	Economic Development Commission; Planning Commission; County Council	Ongoing OITP (Money and Development) , Seneca Rail Site, Demo of Manufacturing Site in Westminster. Golden Corner Sewer
4. Promote a diverse economy that includes a mix of employment sectors, including ecotourism, to insure Oconee County remains economically competitive.	Economic Development Commission; Planning Commission; County Council	Ongoing Agri-Tourism, FARM Center, Oakway School

## Goal #4

**Manage our community facilities, infrastructure, and public resources in a manner that ensures both the existing population and future generations may enjoy the benefits and economic opportunities that make Oconee County an attractive and affordable place to live.**

*Objective 1: Seek local, state, and federal funding support in efforts to expand and enhance educational opportunities for Oconee County residents.*

Applicable Elements: Community Facilities; Economic Development

Strategies for Success	Agencies Responsible	Timeframe for Completion
1. Expand coordination of planning efforts with School District of Oconee County to ensure decisions related to school projects are made with the most complete information available, to include all issues related to infrastructure, accessibility, and traffic planning.	Planning Commission; County Council	2011 State chooses sites and handles traffic issues.
2. Continue to look for opportunities to support and enhance job training, education, and adult back-to-school programs by fostering ties with area universities and vocational technical colleges; this may include promoting the development of satellite programs for better access by local residents.	Economic Development Commission; Planning Commission; County Council	Ongoing TCTC in OITP Career Day Fair Leadership Class
3. Provide the School District of Oconee County appropriate assistance in efforts to enhance and upgrade education.	County Council	Ongoing 2.2 Mils
4. Prioritize expansion and upgrades of libraries through the capital improvements plan and coordinate their location with available infrastructure and the location of schools.	Library Board; Planning Commission; County Council	Ongoing

***Objective 2: Promote and enhance access to affordable housing through both public and private cooperation.***

Applicable Elements: Population; Housing; Economic Development; Priority Investment

Strategies for Success	Agencies Responsible	Timeframe for Completion
1. Create a Housing Task Force, non-profit housing agency, or Trust which would analyze regulatory barriers and seek market-based incentives to promote affordable housing.	Planning Commission; County Council	2011 Planning Commission to-do list
2. Review and amend land development and subdivision regulations as needed to provide incentives to promote the development of high-quality, low-cost housing.	Planning Commission; County Council	2012 Ongoing. Special Exemption for Habitat for Humanity
3. Work with state and local government to find funding sources, such as growth management infrastructure grants, to assist public and private entities seeking funds to develop and rehabilitate high-quality, low-cost housing.	Planning Commission; County Council	Ongoing Planning Commission to-do list
4. Work with local, state, and federal agencies to reduce barriers to affordability; this may include one-stop permitting, pre-approved affordable housing plans, and payback mechanisms for upgrades to infrastructure.	Planning Commission; County Council	Ongoing One stop pre-approval partnership with municipalities for low- cost housing
5. Adopt and enforce substandard housing regulations needed to ensure health and safety; this may include the adoption of the International Property Maintenance Code.	Planning Commission; County Council	2011 COMPLETE

***Objective 3: Upgrade solid waste facilities to improve services and allow for needed upgrades and expansion to provide for anticipated growth.***

Applicable Elements: Community Facilities; Economic Development; Priority Investment

Strategies for Success	Agencies Responsible	Timeframe for Completion
1. Study options and develop long-range solution for the County’s solid waste needs; these may include, but are not limited to, constructing an in-county landfill, partnering with other jurisdictions in developing a regional landfill, or the continuation of long-term contracts with outside parties.	Planning Commission; County Council	2011 ONGOING. Solid Waste Ordinance. Update Solid Waste Plan. PC TO DO LIST.
2. Seek to partner in the development of a solid waste research facility at a regional landfill.	Planning Commission; County Council	Ongoing Regional Landfills dying
3. Identify and construct additional construction and demolition landfill sites within the county.	Planning Commission; County Council	2014 Expanding existing. Private landfills being built.
4. Work to reduce the volume of solid waste through increased recycling and composting.	Planning Commission; County Council	Ongoing
5. Seek out innovative and alternative technologies that not only provide for a long-term solution to current and projected solid waste needs, but may also be used in the future to mitigate and reclaim closed facilities.	Planning Commission; County Council	Ongoing Planning Commission to-do list / Incinerators and Single Stream were studied and proved costly.
6. Seek and establish appropriate uses for closed landfill areas, which may include, but will not be limited to, the establishment of solar power generation facilities and appropriate recreation facilities.	Planning Commission; County Council	2014 Planning Commission to-do list

***Objective 4: Regularly review public safety needs and enhance facilities as required.***

Applicable Elements: Community Facilities; Priority Investment

<b>Strategies for Success</b>	<b>Agencies Responsible</b>	<b>Timeframe for Completion</b>
1. Review and upgrade existing emergency facilities plans on a regular basis, implementing established goals in a systematic manner.	Emergency Services Commission; Planning Commission; County Council	Ongoing
2. Provide local public safety agencies appropriate assistance in obtaining funding to expand and upgrade operations.	Emergency Services Commission; County Council	Ongoing
3. Coordinate local public safety planning and activity with regional, state, and federal agencies.	Emergency Services Commission; Planning Commission; County Council	Ongoing
4. Seek to partner with private entities in the development of emergency satellite facilities and specialized response equipment.	Emergency Services Commission; Planning Commission; County Council	Ongoing

***Objective 5: Continue to monitor closely Oconee County’s compliance with state and federal air-quality standards, adopting and maintaining reduction strategies as necessary.***

Applicable Elements: Natural Resources; Housing; Land Use

<b>Strategies for Success</b>	<b>Agencies Responsible</b>	<b>Timeframe for Completion</b>
1. Monitor results of current and future radon research.	Planning Commission	Ongoing Planning Commission to-do list
2. Partner with Home Builder’s Association and other stakeholders to develop a radon response program; this may include, but is not limited to, an educational component that provides information related to both the cost-savings and potential health benefits of incorporating a radon-mitigation option in early construction stages, or the adoption of new standards requiring proven mitigation methods.	Planning Commission; County Council	2012 Planning Commission to-do list
3. Amend and adopt standards as necessary to maintain compliance with the Clean Air Act.	Planning Commission; County Council	Ongoing COMPLETE

***Objective 6: Work to address the age-related problems that may arise among Oconee County’s aging population, particularly focusing on issues not adequately dealt with by state and federal efforts.***

Applicable Elements: Population; Community Facilities; Priority Investment

<b>Strategies for Success</b>	<b>Agencies Responsible</b>	<b>Timeframe for Completion</b>
1. Review and upgrade county-owned medical/residential/nursing care facilities as needed.	County Council	Ongoing
2. Support municipalities in efforts to establish public transportation, seeking ways to expand into various parts of the unincorporated areas as appropriate.	Planning Commission; County Council	Ongoing CAT bus grant
3. Continue to explore ways to increase the efficiency of emergency medical services throughout the county.	Emergency Services Commission; County Council	Ongoing GHS EMS medical response targets.
4. Seek partnerships with public and private entities to study age-related issues, particularly as they relate to potential impacts on Oconee County.	County Council	Ongoing

***Objective 7: Upgrade and maintain the county road system in a manner that meets the needs of Oconee County’s growing population and provides safe and efficient routes through the county.***

Applicable Elements: Population; Community Facilities; Economic Development; Transportation; Priority Investment

Strategies for Success	Agencies Responsible	Timeframe for Completion
1. Develop an ongoing systematic road maintenance and upgrade program based on a steady revenue sources.	Road Department; Planning Commission; County Council	2012 <b>ONGOING</b>
2. Develop and maintain a priority road upgrade list that not only considers existing traffic ‘bottlenecks’ and other sources of trouble, but also reasonably anticipates those expected to emerge in the coming decade.	Road Department; Planning Commission; County Council	2012 <b>ONGOING</b>
3. Consider and adopt appropriate traffic management tools and techniques that utilize concepts such as limiting the number of curb cuts in high-traffic areas.	Road Department; Planning Commission; County Council	Ongoing <b>Planning Commission to-do list</b>
4. Prioritize evaluation of all roads lying within primary development areas shown on the Future Land Use Map.	Road Department; Planning Commission; County Council	<b>Ongoing</b>
5. Continue to require developers to provide traffic studies to determine if a road must be upgraded to safely handle increased traffic loads and to cover the costs of road upgrades when necessary.	Road Department; Planning Commission; County Council	<b>Ongoing</b>
6. Enhance communication with local and state D.O.T. staff and projects.	Road Department; Other County Staff	<b>Ongoing</b>

***Objective 8: Continue to evaluate and fund public transportation in urbanizing areas of Oconee County, expanding as needed to provide for ongoing growth and development.***

Applicable Elements: Population; Transportation; Priority Investment

<b>Strategies for Success</b>	<b>Agencies Responsible</b>	<b>Timeframe for Completion</b>
1. Promote and assist in the establishment of commuter parking lots to help encourage car pooling, and decrease traffic congestion.	Planning Commission; County Council	Ongoing
2. Continue to partner with Clemson Area Transit (CAT) in keeping existing services, while looking for other opportunities to expand public transportation, to include, but not be limited to, van services and other non-traditional forms of mass transit.	Planning Commission; County Council	Ongoing Non- traditional not included. Two mass transit studies. Funding issues ( Busses are \$300k each)
3. Seek and secure methods of expanding transportation in remote areas for clients of facilities such as DSS, hospitals, medical complexes, government facilities, and parks.	County Council	Ongoing Shared area of Responsibility
4. Support efforts to establish a high-speed rail stop in Clemson, SC and/or Toccoa, Georgia.	Planning Commission; County Council	Ongoing Planning Commission to-do list
5. Seek and establish appropriate methods of mass transit that will promote and enhance tourism; these may include, but are not limited to, water taxis, tour boats, and other modes of transport that allow tourists and residents to enjoy natural resources without dramatically increasing traffic.	Mtn. Lakes Conv. & Visitors Bureau; Parks, Recreation and Tourism Commission; County Council	Ongoing Self-guided tourism , camp ground upgrades

***Objective 9: Expand bicycle and pedestrian routes to allow for greater use of alternative forms of transportation, and to promote ecotourism opportunities.***

Applicable Elements: Natural Resources; Transportation; Priority Investment

<b>Strategies for Success</b>	<b>Agencies Responsible</b>	<b>Timeframe for Completion</b>
1. Develop standards that encourage developers to incorporate sidewalks and bicycle trails into subdivision developments.	Planning Commission; County Council	2013 Ongoing County parks / ramps upgraded
2. Seek grants for creating nature trails, sidewalks, bicycle lanes, and other tools designed to make communities more walkable, reduce vehicle traffic, and improve safety for pedestrians and cyclists.	County Council	Ongoing
3. Upgrade county-maintained parks and recreational	Parks, Recreation and	Ongoing



facilities to encourage and promote ecotourism opportunities.	Tourism Commission; County Council	
---	---------------------------------------	--

***Objective 10: Continue upgrades to the Oconee County Airport in a manner that not only serves existing clientele, but will establish the facility as one of the premier small airports in the nation.***

Applicable Elements: Community Facilities; Economic Development; Transportation;  
Priority Investment

Strategies for Success	Agencies Responsible	Timeframe for Completion
1. Complete ongoing expansion of runway length and upgrade of instrument landing system.	Aeronautics Commission; County Council	2014 COMPLETE
2. Construct planned future upgrades, to include relocation of roads, strengthening of runway, as well as any other necessary components as funding becomes available.	Aeronautics Commission; County Council	2014 Ongoing
3. Construct additional hangar space as needed to accommodate anticipated demand.	Aeronautics Commission; County Council	Ongoing
4. Develop ongoing capital improvements program aimed at upgrading facility to attract additional employers and potential occupants of business parks within the county.	Aeronautics Commission; County Council	2014 Complete and Ongoing
5. Seek and establish ways to utilize airport to foster partnerships with Clemson University	Aeronautics Commission; County Council	Ongoing Clemson Flying Tigers & Hangar lease agreements.

***Objective 11: Establish programs to review all existing community facilities to determine needed changes resulting from both the aging of the facilities and the rapid population growth of Oconee County.***

Applicable Elements: Population; Community Facilities; Priority Investment

Strategies for Success	Agencies Responsible	Timeframe for Completion
1. Review and update Community Facilities Plan, amending to reflect impact of recent growth and development and needs of aging population.	Planning Commission; County Council	2013 No Community Facilities Plan. Planning Commission to-do list
2. Utilize Capital Improvements Plan to systematically construct and upgrade facilities identified in Community Facilities Plan.	Planning Commission; County Council	Ongoing No Community Facilities Plan

3. Look for alternative to tax payer financing of projects such as private partnerships, user based fees, etc.	County Council	Ongoing No Community Facilities Plan
--	----------------	--

## Goal #5

**Expand appreciation for the arts, cultural heritage, significant natural features, and historic treasures in a manner that both enhances our lifestyle and promotes sustainable economic prosperity.**

*Objective 1: Promote a countywide arts program to facilitate an appreciation for the arts and other cultural facilities found within Oconee.*

Applicable Elements: Population; Cultural; Community Facilities; Priority Investment

Strategies for Success	Agencies Responsible	Timeframe for Completion
1. Seek partnerships and other forms of assistance for the School District of Oconee County in supporting the arts.	Parks, Recreation, Tourism Commission; County Council	Ongoing
2. Support local festivals and entertainment events that promote the heritage of the region; this may include, but not be limited to, grants and other appropriate forms of financial assistance.	Parks, Recreation, Tourism Commission; County Council	Ongoing County holds a number of events
3. Seek to expand role of the Oconee County Heritage Museum in documentation and preservation of local cultural and historical treasures; this may include, but not be limited to, funding of facility upgrades, establishment of various programs and partnerships aimed at promoting specific resources, and addition of staff positions.	Parks, Recreation, Tourism Commission; County Council	Ongoing \$30k per year and an employee. Solicitation of donations and artifacts.
4. Support high quality library facilities, programs, and services that enhance, enrich, entertain, and educate our diverse and growing population and present opportunities for life-long learning and the exchange of culture	Library Board County Council School District	Ongoing

***Objective 2: Conserve and protect features of significant local, regional and national interest, such as scenic highways, state parks, and historic sites and expand efforts to promote them for tourism.***

Applicable Elements: Natural Resources; Cultural; Land Use; Priority Investment

Strategies for Success	Agencies Responsible	Timeframe for Completion
1. Seek to insure the preservation and protection of sites and facilities currently listed on historic registers in Oconee County; this may include, but is not limited to, the development of partnerships to assist in the purchase of development rights, and adoption of standards governing future alterations.	Parks, Recreation, Tourism Commission; Planning Commission; County Council	Ongoing Courthouse to National Registry
2. Study and identify any additional cultural and historic properties worthy of consideration on historic registers.	Parks, Recreation, Tourism Commission; Planning Commission; County Council	2012 Complete and Ongoing
3. Provide assistance to local historical and cultural groups in efforts to obtain funding to study, maintain and manage Oconee County historical sites.	County Council	Ongoing
4. Update and maintain GIS data and maps that can be printed and/or displayed on the county website, to provide the public with information on the location of historical and cultural sites.	Parks, Recreation, Tourism Commission; Planning Commission; County Council	2013 COMPLETE
5. Provide appropriate financial and technical support to the development of the Southern Appalachian Farmstead Project currently underway in conjunction with the U.S. Forest Service and other governmental entities.	Parks, Recreation, Tourism Commission; County Council	2014 DEFUNCT
7. Review and adopt appropriate standards aimed at maintaining the state ‘Scenic Highway’ designation for SC Highway 11 and other routes; such standards may be based on adopted Scenic Hwy Corridor Plans or best practices, and may include the designation of the route as a County Scenic Highway.	County Scenic Highway Committee: Parks, Recreation, Tourism Commission; Planning Commission; County Council	2013 COMPLETE
8. Review and update adopted regulations as needed to ensure all cultural, historical, and natural resources receive the protection necessary to remain a viable component of our lifestyle, as well as playing a role in an expanding tourism economic sector.	Parks, Recreation, Tourism Commission; Planning Commission; County Council	Ongoing