

Scenic Highway Corridor Plan:

- (a) A detailed description of the section of the road or highway to be designated, including two or more of the intrinsic qualities as defined in this Ordinance.

The section of highway we would like to have designated as an Oconee County Scenic Highway is the approximately one mile stretch of road beginning at the intersection of Bounty Land Road and Sheep Farm Road and ending at the junction of Highway 28.

- (b) A marked map clearly indicating the section of the road or highway the applicant is proposing for designation.

Please see attachment.

- (c) Photographs or videos of areas which the applicant considers to be of intrinsic value or significance.

Please see attachments.

- (d) Letters of support from citizens, businesses, civic groups and other organizations.

Please see attachments.

- (e) A maintenance plan outlining litter collection responsibilities.

A group from "The Newcomers", members of the Adopt A Highway Program has agreed to schedule litter pick-up three times a year. They currently pick up trash on the existing Sheep Farm Road and have done a commendable job. We can also contact our Litter Control Officer, John McGuffin, and request he have inmates pick up if we find that three times a year is insufficient.

Re: Adopt a Highway - Sheep Farm Road
From: "tddoyle@bellsouth.net"
<tddoyle@bellsouth.net>
To: HENRY L KLAREN <klarenh@bellsouth.net>

Yes, we will do it.

--- On Fri, 10/12/12, HENRY L. KLAREN <klarenh@bellsouth.net> wrote:

From: HENRY L. KLAREN <klarenh@bellsouth.net>
Subject: Adopt a Highway - Sheep Farm Road
To: tddoyle@bellsouth.net
Date: Friday, October 12, 2012, 12:05 PM

Hello Denise,

My name is Jeri Klaren. I am on the board of KOBA as well as on the Oconee County Scenic Highway Committee. The reason for contacting you is to find out if your group, "The Newcomers", plan on picking up the new part of Sheep Farm Road. It is approximately 1 mile long as is the part you are now doing. That would make a total of 2 miles which is the normal distance for an adoption. We on the OSHC are trying to get the new part of the road designated as a Scenic Highway and in order to do this, we have to submit the name of one or more groups that intend to clean up that portion of road at least three times a year. Could we count on your group to commit to this?

I'm sure you are as concerned with the beauty of our county as we are. Otherwise you would not have adopted the portion of road that you did. Thank you in advance for considering our proposal and if you could let me know of your decision by the end of the month it would be greatly appreciated.

Sincerely,
Jeri Klaren
KOBA Representative for
Oconee County Scenic Highway Committee
klarenh@bellsouth.net

Concerned Citizens for Conservation

CCC

**PO Box 309
Walhalla, S.C. 29691**

October 2, 2012

Scenic Highway Committee
955 Park Street
PO Box 191
Columbia, SC 29202

Dear Committee Members:

We respectfully request that the approximately one mile stretch of the new portion of Sheep Farm Road, beginning at the intersection of Sheep Farm Road and Bounty Land Road and ending at Highway 28, be designated as a Scenic Highway. The beauty of this section of road is evidenced by the photos submitted. We would like to keep it beautiful, clean, and just one more reason for visitors to come here.

Thank you for your consideration



Concerned Citizens for Conservation



South Carolina Lions District 32-A

Upstate SC

Scenic Highway Committee
955 Park Street
PO Box 191
Columbia, SC 29202

To Whom It May Concern:

The Walhalla Lions Club asks that the new portion of Sheep Farm Road from Bounty Land Road to Hwy 28 be designated as a Scenic Highway. It is the belief of this organization that it could only benefit Oconee County to do so. The more pristine we can keep our county, the better off we will be to attract new businesses as well as visitors.

Glenn Buddin
President
Walhalla Lions Club



CITY OF SENECA
P.O. Box 4773
221 East North First Street
Seneca, South Carolina 29679
(864)885-2700 Fax: (864)885-2701
www.Seneca.SC.US

Gregory P. Dieterick
Administrator

September 26, 2012

Scenic Highways Committee
955 Park Street
PO Box 191
Columbia, SC 29202

Dear Committee Members:

The City of Seneca supports the effort of the Concerned Citizens for Conservation to Create a Scenic Highway in Oconee County beginning at the intersection of Bountyland Road and Sheep Farm Road ending at Highway 28.

The City of Seneca wants to continue promoting tourism by showcasing the majestic view of the Blue Ridge Mountains on this stretch of road leading into Walhalla and on up the mountain to our State Park and other attractions. Oconee State Park continues to attract in excess of 60,000 visitors a year.

Thank you for your efforts.

Sincerely,

Greg Dieterick
City Administrator



SCHOOL DISTRICT OF OCONEE COUNTY

414 South Pine Street, Walhalla, South Carolina 29691

Phone: 864.886.4400 • Facsimile: 864.886.4408

www.oconee.k12.sc.us

September 19, 2012

SC Scenic Highway Committee

955 Park Street

PO Box 191

Columbia, SC 29202

Dear Sir/Madam:

At their regularly scheduled meeting on November 13, 2007, the Board of Trustees for the School District of Oconee County voted to support the designation of an additional scenic highway route in Oconee County. The School Board of Trustees continues to support the designation of a new portion of road that intersects at Bountyland Road and Sheep Farm Road as a Scenic Highway.

The School Board asks for your consideration of this request, and the Board believes such a designation will assist in maintaining the beauty of our community.

Sincerely,

Mike Lucas, Ed.D.
Superintendent

BLUE MILLS GARDEN CLUB

Walhalla, SC

Blue Hills Garden Club
c/o 101 W. Wesley Street
Walhalla, SC 29691
September 26, 2012

Scenic Highways Committee
955 Park Street
PO Box 191
Columbia, SC 29202

Dear Committee Members:

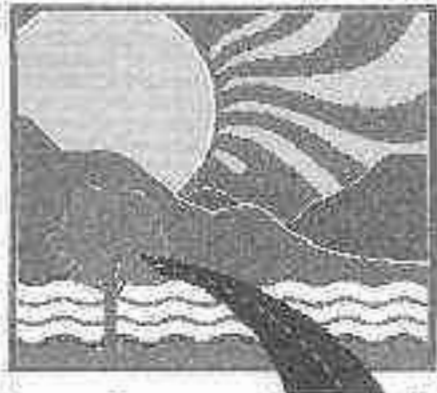
The Blue Hills Garden Club of Walhalla has a long history of supporting efforts to beautify our town and our local highways. We applaud the efforts of the Concerned Citizens for Conservation to create a Scenic Highway in Oconee County from the intersection of Bounty Land Road and Sheep Farm Road and ending at Highway 28. The view from this road leading into Walhalla and on up to the Blue Ridge Mountains is a definite advantage in promoting tourism to this area. We offer our support and encouragement to the designation of this new road as a SC Scenic Highway.

Thank you for your consideration,



The Blue Hills Garden Club of Walhalla
Martha Hedden Murtiashaw
Club president, 2012-2013

cc: Oconee County Council



**Keep Oconee Beautiful
Association**

**P.O. Box 1491
Seneca, SC 29679
(864) 638 - 5889**

Scenic Highways Committee
955 Park Street
P.O. Box 191
Columbia, SC 29202

September 11, 2012

Dear Committee Members,

The purpose of this communication is to provide support from Keep Oconee Beautiful Association (KOBA) for the request to designate the approximately one mile stretch of Road, beginning at the intersection of Bountyland Road and ending at Highway 28, known as Sheep Farm Road.

KOBA's mission is to restore and maintain the beauty of Oconee County through education, awareness, cooperation and action. KOBA has been assisting in the beautification of Oconee County for over twenty years and is an affiliate in good standing of Keep America Beautiful. KOBA administers the county Adopt-A-Highway program, conducts anti-litter and recycling programs in Oconee County schools, holds an annual Earth Day and Great American Cleanup plus other opportunities promoting beautification.

Approving this request will help preserve the existing beauty of this section of highway and the gateway to the Blue Ridge Mountains.

Thank you for your consideration,

Fred Bailine

Fred Bailine, Chairperson
Keep Oconee Beautiful Association

cc: Oconee County Council













OCONEE COUNTY



SCENIC HIGHWAY COMMITTEE

**415 SOUTH PINE STREET
WALHALLA, SC 29691
864-638-4218**

December 12, 2012

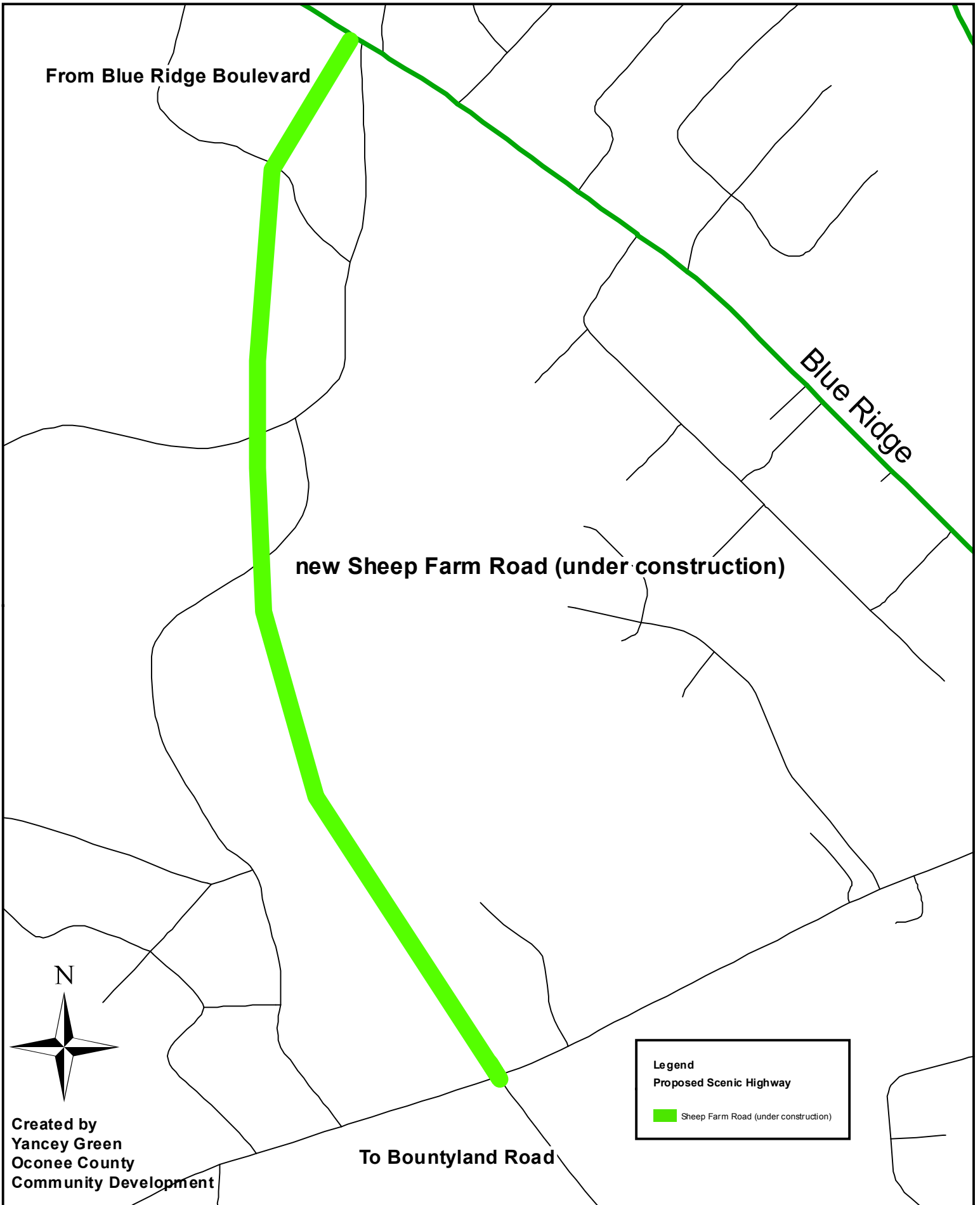
From: Chairman Dave LaVere, on behalf of the Scenic Highway Committee
To: School District of Oconee County

The Oconee County Scenic Highway Committee was pleased to meet with Dr. Thorsland concerning the plans for the new Walhalla High School on December 6, 2012. After meeting with Dr. Thorsland, the Committee wanted to be sure their concerns were heard by the School District of Oconee County. The Scenic Highway Committee would like to review the architectural landscape plans, as to how it affects the screening of Highway 11, and to provide comments to the School District.

Chairman David LaVere

A handwritten signature in cursive script that reads "David LaVere".

Proposed Scenic Highway designation for Sheep Farm Road



From Blue Ridge Boulevard


new Sheep Farm Road (under construction)

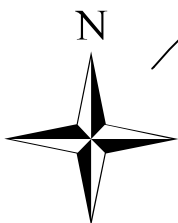
Blue Ridge

To Bountyland Road

Legend

Proposed Scenic Highway

 Sheep Farm Road (under construction)



**Created by
Yancey Green
Oconee County
Community Development**