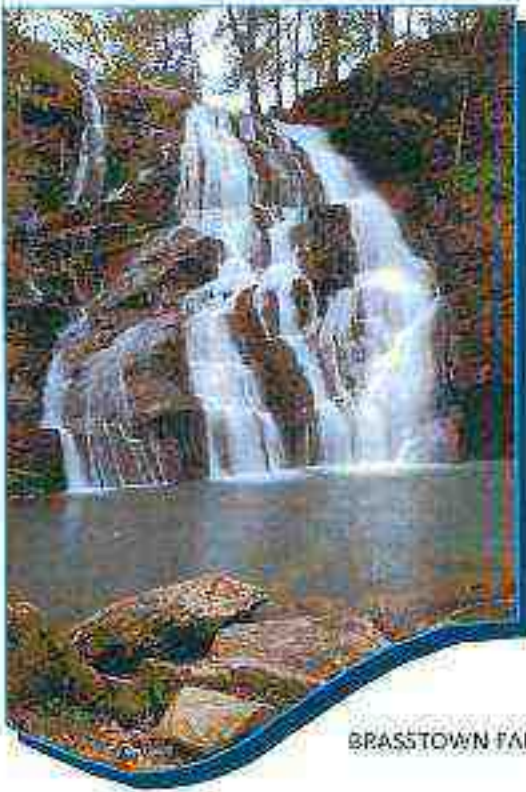


OCONEE COUNTY, SC STRATEGIC PLANNING RETREAT 2016

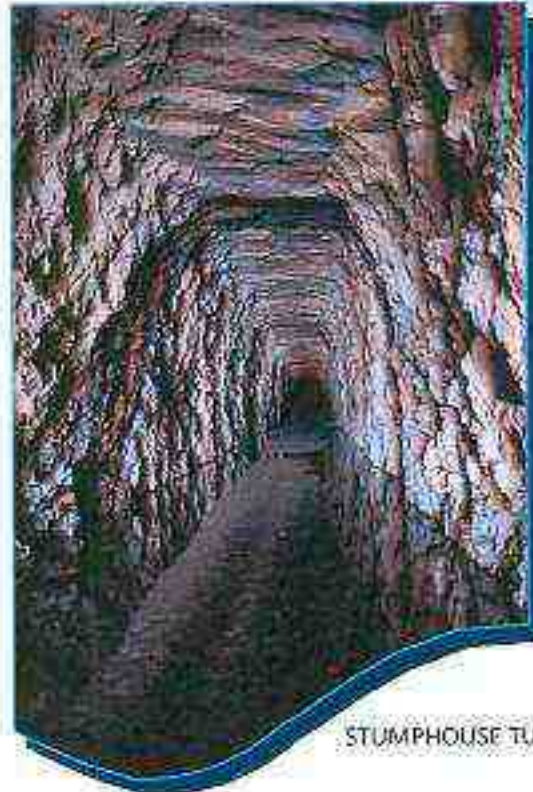


LAKE KEOWEE

415 SOUTH PINE STREET
WALHALLA, SC 29683



BRASSTOWN FALLS



STUMHOUSE TUNNEL

"LAND BESIDE THE WATER"

Oconee County Pre-Budget Workshop Annual Budget

for the year ending
June 30, 2017



AGENDA

Oconee County's Annual Budget is comprised of the General Fund, Enterprise Fund, Capital Projects Fund, and Special Revenue Funds.

• The General Fund consists of the basic operations of the County and is the primary operating fund.

• The Enterprise Funds consists of the Rock Quarry Operations, and the Oconee FOCUS Operations.

• The Capital Projects Fund is made of appropriated funds set aside for major Capital Projects.

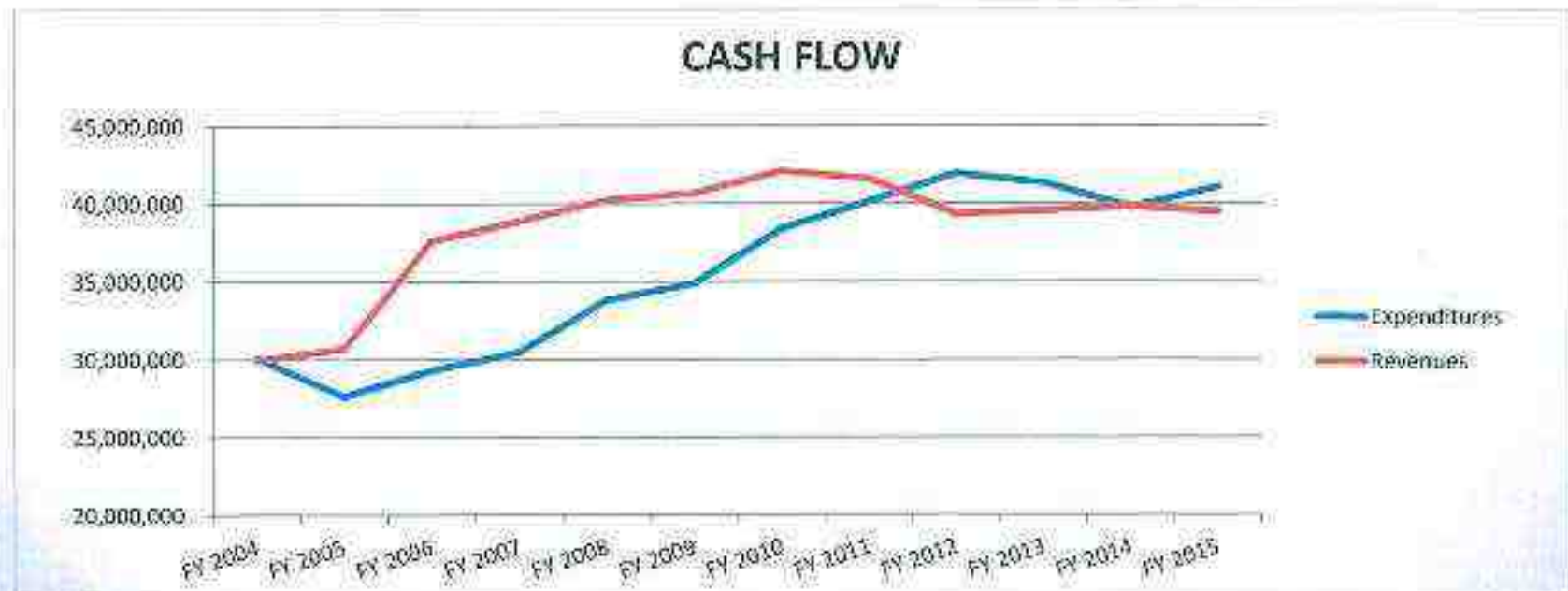
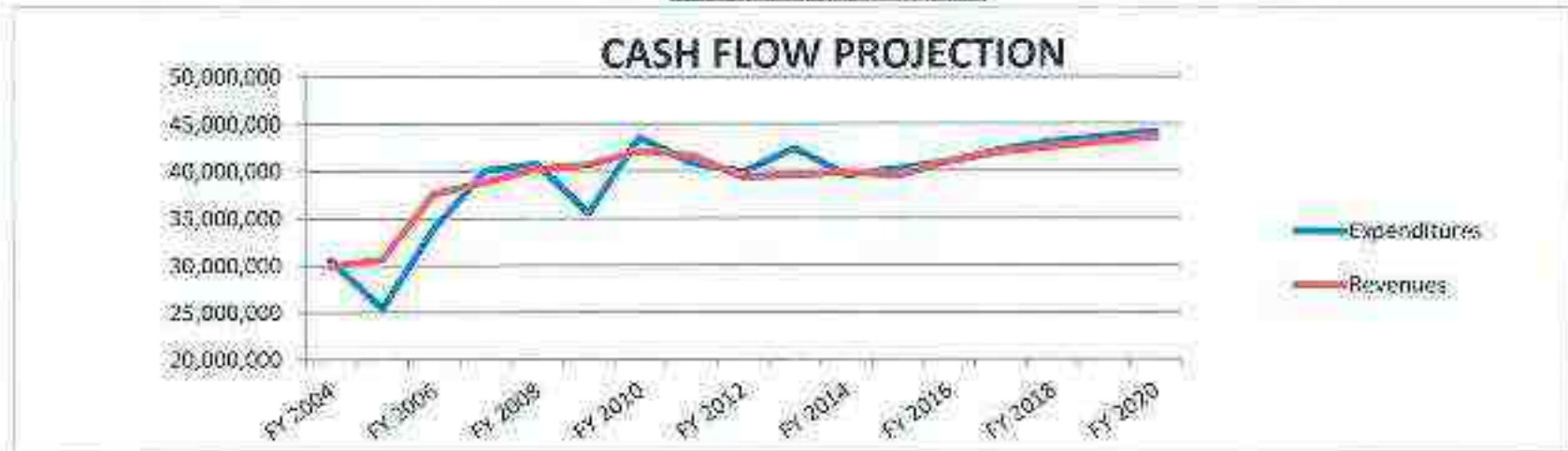
• The Special Revenue Funds account for specific revenue sources that are restricted to expenditures for specified purposes including the Unincorporated Emergency Services District.

- Cash Flow Projection
- Expenditure History
- Personnel Expenses
- Number of Personnel
- Cost to Serve
- Revenue History
- Millage Rate Trends
- Debt Margin
- Fund Balance Breakdown
- Balance Sheet Comparison
- Capital Projects Fund
- Budget Calendar
- Revenue Projections
- Questions



CASH FLOW PROJECTION

GENERAL FUND



Oconee County
General Fund
Projected Cash Flow Statement

	6	7	8	9	10	11	12	13	14	15	16	17	18	19	20
	FY 2006	FY 2007	FY 2008	FY 2009	FY 2010	FY 2011	FY 2012	FY 2013	FY 2014	FY 2015	FY 2016	FY 2017	FY 2018	FY 2019	FY 2020
REVENUES:															
Taxes	28,270,910	28,748,684	28,163,033	28,840,325	29,069,907	29,163,803	31,030,986	30,220,702	30,751,395	30,770,115	30,167,810	30,436,250	30,688,186	30,456,257	30,567,734
Miscellaneous	5,751,742	3,087,055	4,647,180	4,279,525	4,289,562	3,481,181	2,488,838	2,488,182	2,426,244	2,226,226	3,028,150	3,410,756	3,411,210	3,269,171	3,307,303
Charges for Services	403,133	452,492	933,849	1,75,582	359,528	2,449,168	2,658,025	1,314,250	1,728,415	1,511,251	1,894,520	2,100,000	2,150,259	2,200,000	2,150,000
Fees and Fines/Lines	448,941	436,394	651,500	903,911	400,477	397,693	355,911	233,223	375,385	281,886	311,350	264,780	259,886	292,166	258,027
Miscellaneous and Other	171,253	351,331	70,000	117,138	200,000	1,498,884	1,843,016	283,489	184,472	104,277	741,283	220,000	200,000	140,200	170,000
License and Permits	2,882,144	3,232,844	2,702,721	3,993,284	3,862,187	394,723	375,691	2,541,156	2,222,222	3,125,266	3,188,639	3,000,000	3,216,492	3,181,353	3,488,526
Interest	1,858,413	1,448,232	1,491,932	3,094,654	261,000	218,195	341,231	272,222	110,235	431,247	537,735	442,336	442,436	450,270	457,368
TOTAL OPERATING REVENUE	37,292,293	38,362,214	40,223,223	41,662,032	42,104,224	41,997,204	38,315,232	38,586,762	39,825,218	38,825,316	40,098,061	41,892,022	42,524,451	43,071,516	43,166,650
	2%	2%	2%	2%	2%	2%	2%	1%	2%	2%	2%	2%	2%	2%	1%
OPERATING EXPENSES:															
General Government	10,210,352	11,031,923	11,431,713	12,051,605	12,179,330	12,200,761	12,454,698	11,280,758	9,985,627	9,331,117	10,220,073	11,120,000	10,200,000	10,420,000	10,300,000
Judicial Services	1,611,032	1,448,788	1,102,890	1,016,144	1,222,277	2,412,494	2,671,218	2,552,158	2,916,775	2,721,025	2,748,242	2,865,302	2,877,373	2,714,602	2,241,271
Police/ Sheriff	5,611,261	10,125,742	10,427,097	11,673,976	12,508,890	13,690,957	14,031,284	15,971,372	15,782,519	17,200,000	17,016,425	17,250,000	18,000,000	18,000,000	18,000,000
Roads Department	2,751,152	3,323,223	2,725,728	2,403,488	3,883,829	3,750,867	3,615,472	3,418,427	3,424,284	3,428,435	3,488,740	3,734,671	3,873,610	4,225,291	4,541,170
Water	626,391	682,843	722,862	615,911	611,169	607,098	1,051,214	550,155	935,811	0	0	0	0	0	0
Waste Water	0	0	1,775,851	1,775,457	1,318,563	1,771,328	3,435,375	3,259,278	3,422,495	1,635,051	1,722,077	1,763,000	1,892,000	1,892,000	1,892,000
Public and Welfare	811,674	818,839	420,436	642,760	622,490	679,338	661,785	255,844	824,284	824,342	843,045	871,031	905,774	793,988	693,821
Culture and Recreation	2,485,417	2,128,218	1,234,032	2,247,938	2,293,697	2,293,222	2,293,222	2,293,222	2,293,222	2,293,222	2,293,222	2,293,222	2,293,222	2,293,222	2,293,222
Economic Development	358,419	342,352	327,413	317,642	308,696	308,696	308,696	308,696	308,696	308,696	308,696	308,696	308,696	308,696	308,696
Physical Reserve	0	0	0	0	0	0	0	0	0	0	0	0	0	0	0
Interest and Floor Charges	0	0	0	0	0	0	0	0	0	0	0	0	0	0	0
Resource Cont.	0	0	0	0	0	0	0	0	0	0	0	0	0	0	0
Capital Outlay	713,634	18,274	1,114	0	0	0	0	0	0	0	0	0	0	0	0
TOTAL OPERATING EXPENSES	29,254,275	30,458,856	32,296,913	34,557,017	38,267,625	43,331,254	41,948,475	41,213,871	39,774,155	41,084,634	41,651,049	42,962,465	43,680,969	44,368,150	44,888,020
	4%	4%	1%	2%	10%	3%	2%	2%	1%	2%	1%	2%	2%	1%	1%
Net Cash Flow From Operations	8,038,018	7,903,358	7,926,310	7,105,015	3,836,599	8,665,950	6,366,757	7,372,891	10,051,063	7,740,682	8,447,012	8,929,557	8,903,482	8,651,366	8,378,630
OTHER FUNDING SOURCES:															
Operating Transfers In	250,000	250,000	250,000	1,104,137	741,968	1,129,617	648,444	155,725	1,839,988	881,867	712,000	550,000	550,000	550,000	550,000
Operating Transfers Out	(5,271,500)	(10,088,846)	(7,238,222)	(1,235,227)	(3,958,209)	(1,881,872)	(2,515,828)	(1,515,558)	(3,064,301)	(1,212,222)	(1,195,154)	(1,500,000)	(1,500,000)	(1,500,000)	(1,500,000)
Insurance Recoveries	0	0	0	0	0	0	0	0	0	0	0	0	0	0	0
Proceeds from Capital Assets/Debt	0	0	0	0	0	0	0	0	0	0	0	0	0	0	0
Sale of Capital Assets	13,472	680,550	78,210	132,126	18,202	57,952	42,237	71,171	0	42,802	30,000	30,000	30,000	35,000	35,000
TOTAL OTHER FUNDING	(4,988,444)	(9,358,296)	(7,180,212)	(1,103,091)	(3,939,997)	(721,262)	(2,467,391)	(1,444,383)	1,775,687	669,645	516,846	550,000	550,000	550,000	550,000
Net Change in Fund Balance	3,049,574	(1,454,938)	746,098	601,924	(103,396)	794,688	4,901,366	5,928,508	11,826,750	8,410,327	8,963,858	8,979,557	8,353,512	8,102,366	7,828,630
FUNDS BROUGHT FORWARD	11,420,770	14,981,698	13,468,216	14,070,140	13,966,744	14,761,432	19,662,798	25,591,299	37,417,949	45,828,276	54,792,134	63,771,691	72,725,203	81,627,569	89,456,199
Plus Year Adjustment	0	0	0	0	0	0	0	0	0	0	0	0	0	0	0
FUNDS AVAILABLE	11,420,770	14,981,698	13,468,216	14,070,140	13,966,744	14,761,432	19,662,798	25,591,299	37,417,949	45,828,276	54,792,134	63,771,691	72,725,203	81,627,569	89,456,199

EXPENDITURE

HISTORY

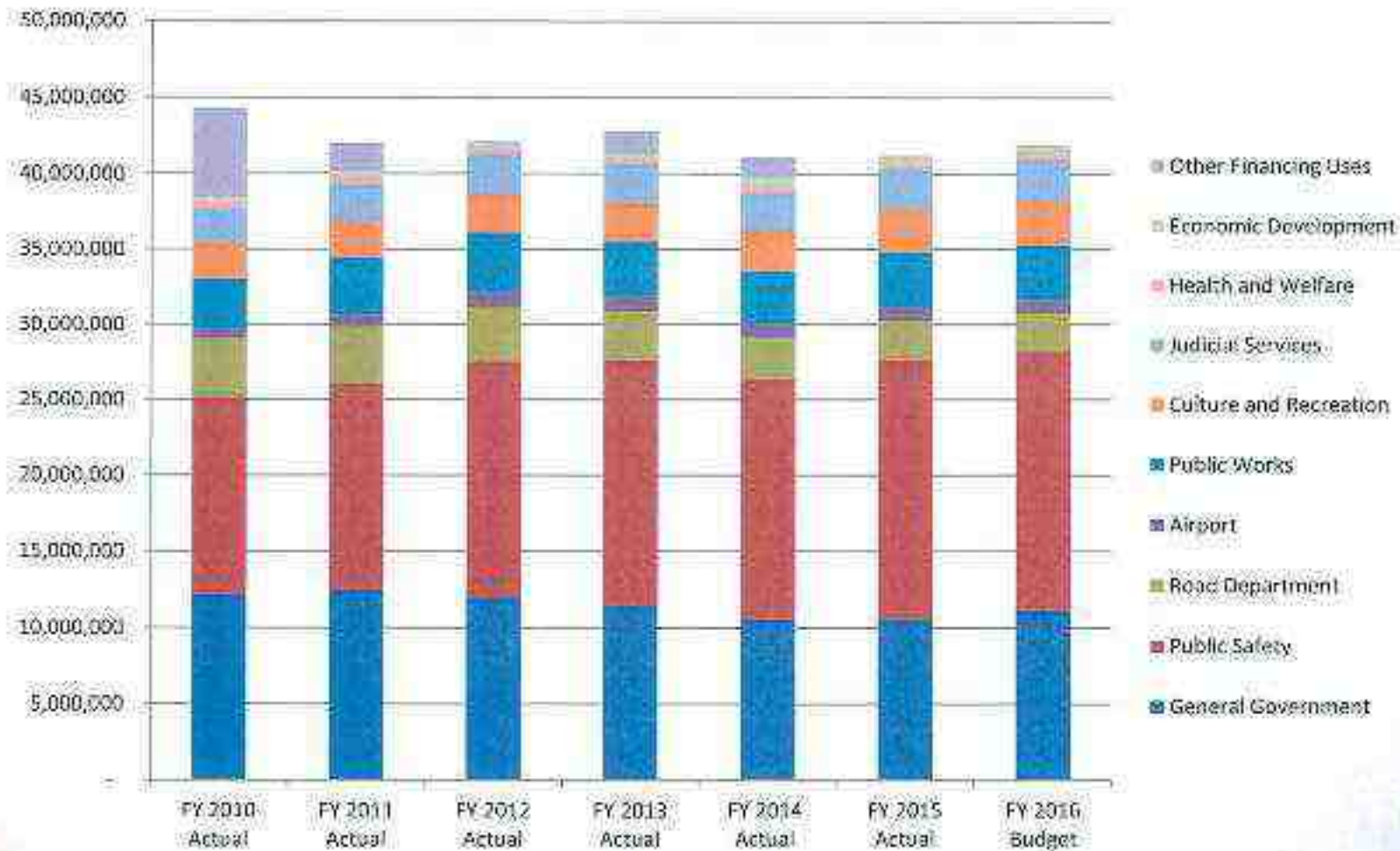
GENERAL FUND

	FY 2010	FY 2011	FY 2012	FY 2013	FY 2014	FY 2015	FY 2016
	Actual	Actual	Actual	Actual	Actual	Actual	Budget
General Government	10,443,088	10,677,912	10,562,068	10,106,633	9,902,866	9,886,071	10,504,301
Judicial Services	3,232,277	2,412,446	2,607,374	2,592,198	2,519,575	2,721,035	2,748,240
Public Safety	12,968,870	13,596,957	15,531,638	16,174,039	15,782,519	17,100,408	17,048,426
Road Department	3,903,639	3,759,887	3,618,570	3,279,067	2,766,555	2,622,387	2,581,358
Airport	617,109	807,098	1,020,818	980,155	938,811	874,428	887,382
Solid Waste	3,319,543	3,771,339	3,935,370	3,629,276	3,520,876	3,688,058	3,645,587
Health and Welfare	522,459	579,318	294,699	255,665	237,675	240,349	312,399
Culture and Recreation	2,395,807	2,461,421	2,555,351	2,559,165	2,636,896	2,770,670	2,901,652
Economic Development	248,696	266,608	412,310	407,090	819,558	544,645	505,013
Direct Aid	1,734,147	1,798,849	1,411,275	1,330,525	648,619	636,583	630,646
Other Financing	5,956,299	1,883,872	163,608	1,315,568	1,364,391	112,723	83,000
Total	46,344,134	42,015,726	42,113,081	42,829,381	41,138,540	41,107,329	41,848,004



EXPENDITURE HISTORY

GENERAL FUND

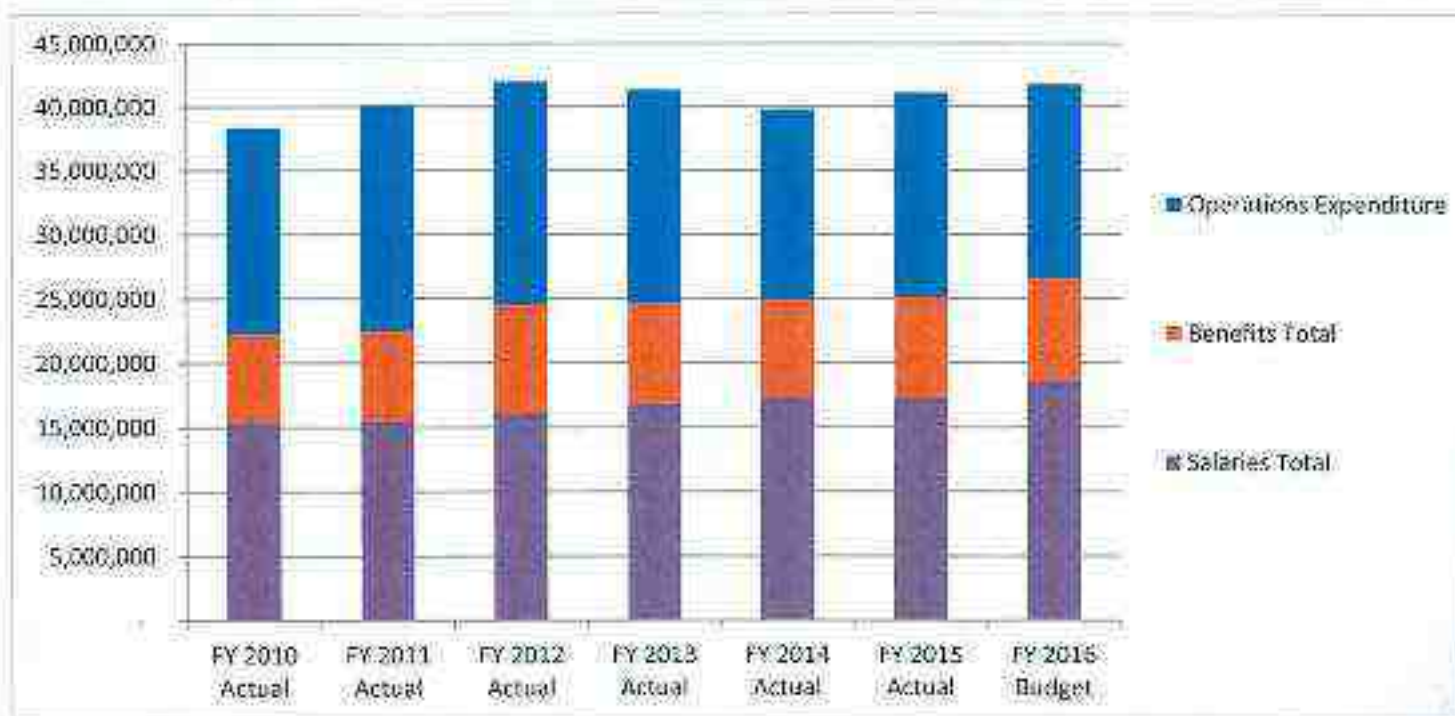


	FY 2010	FY 2011	FY 2012	FY 2013	FY 2014	FY 2015	FY 2016
	Actual	Actual	Actual	Actual	Actual	Actual	Budget
302 ASSESSOR	1,217,692	2,393,637	1,315,143	1,004,143	1,024,864	1,026,405	1,112,847
JDITOR	363,003	422,487	438,844	463,786	442,403	460,275	465,864
303 BOARD OF ASSESSMENT	4,380	5,853	7,618	8,211	4,634	3,748	11,624
304 TAX CENTER	174,592	987	-	-	-	-	-
305 TAX COLLECTOR	410,783	356,677	438,024	420,321	419,904	406,251	445,907
306 TREASURER	426,184	482,699	515,728	502,703	488,245	471,204	493,251
704 COUNTY COUNCIL	331,150	317,917	319,528	329,753	263,290	282,312	288,899
705 DIRECT AID	1,734,347	1,798,849	1,411,275	1,330,525	648,619	636,553	630,646
706 DELEGATION	80,655	79,209	84,909	84,711	84,598	86,555	87,480
PROFESSIONAL ENGINEERING	46,027	2,263	-	-	-	-	-
708 FINANCE DEPARTMENT	593,855	568,331	542,630	570,617	-	-	561,659
709 NON-DEPARTMENTAL	730,054	852,027	922,898	1,162,543	1,917,131	2,182,895	2,062,496
710 HUMAN RESOURCES	845,908	903,330	889,516	941,704	-	-	359,537
711 INFORMATION TECHNOLOGY	850,502	1,427,146	1,582,814	1,288,422	1,016,331	887,974	793,731
712 PLANNING DEPARTMENT	189,872	198,165	241,187	138,014	-	-	-
713 PROCUREMENT	187,878	185,923	193,055	170,569	162,308	157,565	157,325
714 FACILITIES MAINTENANCE	1,344,221	960,481	1,160,263	1,096,123	1,085,825	1,139,640	1,146,225
715 REGISTRATION & ELECTIONS	172,829	159,767	200,374	169,235	205,898	218,521	192,585
716 SOIL & WATER CONSERVATION	47,277	54,829	63,493	56,322	67,068	72,254	84,375
717 ADMINISTRATOR'S OFFICE	199,154	227,009	479,131	568,271	584,323	463,507	602,149
721 VEHICLE MAINTENANCE	1,870,104	775,691	847,424	809,592	810,331	789,892	790,460
ZONING	4,649	3,696	-	-	-	-	-
735 REGISTER OF DEEDS	354,319	299,788	319,488	321,593	308,270	319,260	329,745
741 COUNTY ATTORNEY	-	-	-	-	-	-	518,142
747 ADMINISTRATIVE SERVICES	-	-	-	-	1,017,445	917,814	-
General Government	12,179,435	12,476,761	11,973,344	11,437,158	10,551,486	10,522,625	11,134,947
101 SHERIFF	5,918,839	6,222,109	6,591,718	6,755,089	6,466,643	7,453,019	6,699,051
102 RURAL FIRE	-	-	-	1,859,375	1,590,254	1,649,987	-
103 CORONER	144,531	151,996	158,267	174,130	172,989	554,363	216,774
104 COMMUNICATIONS	1,233,350	1,302,393	1,382,445	1,379,004	1,543,909	1,404,723	1,440,704
105 EMERGENCY MANAGEMENT	-	-	-	455,305	332,398	317,523	-
106 LAW ENFORCEMENT CENTER	2,466,697	2,815,534	2,761,947	2,635,944	2,897,238	2,947,915	3,902,584
107 EMERGENCY SERVICES	2,216,532	2,132,020	3,648,058	1,928,340	1,685,000	1,585,320	3,449,886
110 ANIMAL CONTROL	394,048	461,913	523,500	448,865	487,835	511,972	537,339
702 COMMUNITY DEVELOPMENT	594,873	510,992	465,705	537,985	606,254	675,586	802,088
Public Safety	12,968,870	13,596,957	15,531,638	16,174,039	15,782,519	17,100,408	17,048,426
ROAD DEPARTMENT	3,903,639	3,759,887	3,618,570	3,279,067	2,766,555	2,622,387	2,581,358
AIRPORT	617,109	807,098	1,020,818	980,155	938,811	874,428	887,382
Transportation	4,520,748	4,566,985	4,639,388	4,259,222	3,705,366	3,496,815	3,468,740
718 SOLID WASTE DEPARTMENT	3,319,543	3,771,339	3,935,370	3,629,276	3,520,876	3,688,058	3,645,587
Public Works	3,319,543	3,771,339	3,935,370	3,629,276	3,520,876	3,688,058	3,645,587
202 PARKS, RECREATION, & TOUR	439,786	459,576	534,890	480,773	569,339	621,448	637,378
203 HIGH FALLS PARK	293,247	274,886	274,751	264,885	275,035	302,245	345,728
204 SOUTH COVE PARK	273,351	268,844	248,583	301,770	281,373	328,899	395,611
205 CHAU RAM PARK	193,699	174,622	192,144	193,060	185,575	204,259	222,107
206 LIBRARY	1,195,724	1,283,492	1,304,984	1,318,677	1,325,574	1,313,819	1,300,828
Culture and Recreation	2,395,807	2,461,420	2,555,351	2,559,165	2,636,896	2,770,670	2,901,652

	FY 2010	FY 2011	FY 2012	FY 2013	FY 2014	FY 2015	FY 2016
	Actual	Actual	Actual	Actual	Actual	Actual	Budget
501 CLERK OF COURT	619,310	663,266	749,901	726,600	600,646	658,313	774,486
502 PROBATE COURT	406,827	441,464	373,911	365,595	364,050	406,892	372,000
504 SOLICITOR	464,930	514,343	623,978	631,445	668,025	691,447	680,330
509 MAGISTRATE	591,210	643,373	684,584	656,558	687,054	764,383	720,653
510 PUBLIC DEFENDER	150,000	150,000	175,000	212,000	200,000	200,000	200,000
Judicial Services	2,232,277	2,412,446	2,607,374	2,592,198	2,519,775	2,721,035	2,748,240
CHARITY MEDICAL	278,465	277,547					
402 DEPT OF SOCIAL SERVICES	12,328	7,864	11,852	8,616	10,740	10,075	36,700
403 HEALTH DEPARTMENT	59,263	119,444	106,572	73,769	44,498	35,947	82,277
404 VETERANS' AFFAIRS	172,403	174,483	176,275	173,279	182,437	194,327	193,422
Health and Welfare	522,459	579,338	294,699	255,665	237,675	240,349	312,399
707 ECONOMIC DEVELOPMENT	248,696	266,608	412,310	407,090	819,558	544,645	505,013
Economic Development	248,696	266,608	412,310	407,090	819,558	544,645	505,013
TRANSFERS OUT	5,956,299	1,883,872	163,608	1,515,568	1,364,391	112,725	83,000
Other Financing Uses	5,956,299	1,883,872	163,608	1,515,568	1,364,391	112,725	83,000
	44,344,134	42,015,726	42,113,081	42,829,381	41,138,540	41,197,329	41,848,004

PERSONNEL V. OPERATIONS

General Fund:	FY 2010 Actual	FY 2011 Actual	FY 2012 Actual	FY 2013 Actual	FY 2014 Actual	FY 2015 Actual	FY 2016 Budget
Salaries Total	15,329,126	15,438,124	16,081,936	16,733,371	17,306,573	17,266,643	18,390,550
Benefits Total	5,865,463	7,000,534	8,413,524	7,836,381	7,545,199	7,847,358	7,938,693
Operations Expenditure	16,174,083	17,693,196	17,454,015	16,744,060	14,922,211	15,970,603	15,235,761
Total Expenditures Summary	38,368,672	40,131,854	41,949,475	41,313,812	39,773,983	41,084,604	41,765,004



Salary per Department	FY 2010	FY 2011	FY 2012	FY 2013	FY 2014	FY 2015	FY 2016
	DEBIT	DEBIT	DEBIT	DEBIT	DEBIT	DEBIT	Budget
Administrative Services	-	-	-	-	618,833	498,131	-
Administrator's Office	157,032	161,043	220,567	284,509	301,444	206,756	242,000
Airport	179,799	180,181	192,867	199,693	196,108	195,550	191,088
Animal Control	163,985	162,124	163,143	165,674	165,645	184,918	211,710
Assessor	654,360	503,821	587,771	582,208	592,333	621,387	680,857
Auditor	232,223	229,882	237,360	241,347	250,709	256,421	262,854
Board Of Assessment Appeals	3,811	4,910	6,503	5,619	4,148	3,398	10,310
Chau Ram Park	91,719	95,875	99,076	101,741	106,774	107,726	107,640
Clerk of Court	355,002	369,820	392,383	381,744	326,579	334,898	428,982
Communications	628,889	674,318	749,772	784,043	797,360	819,751	834,255
Community Development	391,894	320,299	285,593	341,311	383,541	441,937	519,137
Coroner	55,528	55,245	56,973	57,777	59,646	60,357	60,687
County Attorney	-	-	-	-	-	-	180,000
County Council	80,534	75,658	76,652	77,744	76,948	80,353	81,287
Delegation	47,321	45,990	48,405	49,824	50,207	51,241	52,258
Economic Development	102,474	113,494	156,119	138,339	152,837	182,786	158,743
Emergency Management	-	-	0	151,481	136,532	128,223	-
Emergency Services	412,402	510,377	570,386	-	-	-	898,721
Facilities Maintenance	291,640	308,222	346,521	351,900	365,296	383,823	410,257
Finance Department	386,171	346,534	332,298	332,877	-	-	330,143
High Falls Park	125,799	122,716	128,835	129,858	139,233	147,011	142,643
Human Resources	150,909	151,262	156,271	160,657	-	-	188,545
Information Technology	160,842	417,265	489,545	444,435	341,343	308,137	235,873
Law enforcement Center	1,200,355	1,293,098	1,256,903	1,300,972	1,398,096	1,390,746	1,983,870
Library	708,147	692,206	714,870	725,397	702,921	661,704	683,154
Magistrate	384,738	379,279	375,917	389,854	407,740	451,542	428,515
Parks, Recreation and Tour	198,356	197,892	192,957	195,796	177,235	144,598	300,996
Planning Department	131,104	132,773	132,878	70,646	-	-	-
Probate Court	255,590	265,014	229,653	235,091	235,454	244,617	237,114
Procurement	124,417	124,539	128,472	113,252	105,356	107,573	109,347
Register of Deeds	182,436	158,416	163,862	167,455	172,565	175,762	180,052
Registration & Elections	79,146	81,115	78,256	88,071	124,678	119,363	103,852
Road Department	1,291,163	1,269,069	1,287,102	1,272,248	1,376,325	1,374,330	1,392,761
Rural Fire	-	-	0	707,822	753,499	735,104	-
Sheriff	3,589,193	3,511,708	3,593,588	3,794,955	3,975,774	4,114,096	4,112,191
Soil and Water	26,115	23,799	25,239	19,832	27,189	28,040	28,255
Solicitor	331,807	375,095	433,348	445,788	493,365	497,336	500,513
Solid Waste	1,127,678	1,080,146	1,124,631	1,150,690	1,173,827	1,150,519	1,164,129
South Cove Park	118,486	111,666	113,305	114,948	120,283	130,378	170,837
Tax Collector	102,990	90,560	102,965	104,602	104,138	107,933	113,888
Treasurer	230,474	228,635	233,070	243,120	257,495	226,721	234,967
Vehicle Maintenance	459,387	459,007	479,023	488,227	507,575	462,941	485,443
Veterans' Affairs	115,212	115,067	118,857	121,824	127,542	130,537	132,676
Total by Year	15,329,126	15,438,124	16,081,936	16,733,371	17,306,573	17,266,643	18,590,550

Benefits Total By Department	FY 2010	FY 2011	FY 2012	FY 2013	FY 2014	FY 2015	FY 2016
	DEBIT	DEBIT	DEBIT	DEBIT	DEBIT	DEBIT	Budget
Administrative Services	-	-	-	-	215,212	195,700	-
Administrator's Office	37,788	50,168	82,129	101,816	86,080	58,451	76,583
Airport	71,228	72,559	89,705	77,885	75,370	85,443	75,411
Animal Control	86,706	87,263	94,912	75,870	85,809	93,226	90,529
Assessor	288,341	251,098	312,512	287,908	272,031	292,345	308,310
Auditor	105,973	105,962	121,926	130,136	108,595	125,206	114,624
Board Of Assessment Appeals	34	198	244	238	185	196	264
Chau Ram Park	46,461	47,477	52,380	45,481	48,019	56,848	49,482
Clerk of Court	153,506	154,117	187,407	188,182	119,832	162,386	172,334
Communications	279,552	289,595	354,027	323,262	338,647	389,997	341,999
Community Development	174,055	153,870	142,052	164,908	135,871	168,311	185,551
Coroner	20,152	20,745	21,551	33,549	21,209	24,224	22,172
County Attorney	-	-	-	-	-	-	52,392
County Council	39,219	38,410	51,042	42,233	45,765	61,579	52,568
Delegation	17,297	17,217	20,355	20,680	18,014	20,625	19,022
Economic Development	37,786	38,522	62,055	51,677	56,864	78,284	59,973
Emergency Management	-	-	-	47,827	61,332	64,807	-
Emergency Services	210,418	262,574	404,496	41,453	-	-	489,215
Facilities Maintenance	154,069	156,654	204,034	190,704	177,228	218,015	193,868
Finance Department	149,082	144,178	155,623	159,723	-	-	126,216
High Falls Park	62,608	62,178	68,027	63,672	63,845	74,824	65,029
Human Resources	63,556	64,024	69,900	65,070	-	-	72,492
Information Technology	65,195	156,817	224,352	167,507	150,142	121,339	91,058
Law enforcement Center	585,676	617,959	703,345	567,018	632,717	704,872	807,517
Library	289,903	289,822	299,484	277,621	277,609	312,504	273,909
Magistrate	156,125	157,761	179,530	172,648	161,846	186,321	171,338
Non-Departmental	-	-	-	-	81,419	(542,637)	113,159
Parks, Recreation and Tour	49,920	51,458	56,244	48,631	61,869	59,598	56,132
Planning Department	52,142	52,885	67,206	32,857	-	-	-
Probate Court	101,353	103,439	109,463	105,421	95,174	113,132	100,622
Procurement	49,196	49,694	54,598	48,589	45,165	43,880	38,958
Register of Deeds	77,548	64,692	78,867	81,534	66,034	76,401	70,453
Registration & Elections	32,825	33,090	30,655	31,887	35,396	40,067	33,378
Road Department	647,266	607,537	739,885	638,217	663,050	753,620	668,297
Rural Fire	-	-	-	362,648	398,391	435,045	-
Sheriff	1,548,647	1,592,159	1,911,273	1,849,688	1,668,063	1,943,525	1,664,110
Soil and Water	13,762	13,408	13,266	10,750	13,457	16,381	14,482
Solicitor	123,124	138,648	189,688	184,634	172,529	193,484	178,317
Solid Waste	587,114	569,520	710,323	638,749	598,841	677,415	601,858
South Cove Park	61,344	59,826	58,790	49,704	59,754	72,362	63,410
Tax Collector	47,511	45,503	50,562	43,430	47,075	55,563	50,774
Treasurer	106,680	106,376	123,327	119,932	108,409	105,498	100,774
Vehicle Maintenance	223,528	224,049	265,678	245,431	228,111	249,508	218,567
Veterans' Affairs	48,773	49,080	52,611	47,213	50,241	59,011	53,546
Total by Year	6,865,463	7,000,534	8,413,524	7,836,381	7,545,199	7,847,358	7,938,693

	FY 2010 DEBIT	FY 2011 DEBIT	FY 2012 DEBIT	FY 2013 DEBIT	FY 2014 DEBIT	FY 2015 DEBIT	FY 2016 Budget
Administrative Services	-	-	-	-	183,232	223,527	-
Administrator's Office	4,334	15,798	176,435	181,947	196,799	198,300	283,566
Airport	366,082	554,358	738,245	702,577	667,334	593,435	620,883
Animal Control	143,357	212,527	265,445	207,322	236,382	233,829	235,100
Assessor	274,991	1,638,718	414,860	134,028	160,500	112,672	123,680
Auditor	24,806	86,643	79,559	92,303	83,099	78,648	88,386
Board of Assessment Appeals	535	744	871	2,353	301	154	1,050
Chau Ram Park	55,519	31,271	40,687	45,839	30,781	39,685	64,985
Clerk of Court	146,858	175,385	170,112	156,674	154,235	161,029	173,170
Communications	324,910	338,480	278,645	271,700	407,901	194,976	264,450
Community Development	28,924	36,823	38,059	31,766	86,842	65,338	97,400
Computer Tax Center	174,592	987	-	-	-	-	-
Coroner	68,852	76,006	79,743	81,079	92,134	469,782	133,915
County Attorney	-	-	-	-	-	-	285,750
County Council	211,397	203,850	191,834	209,776	140,577	140,380	155,044
Delegation	16,036	16,002	16,149	14,208	16,378	14,689	16,200
Department of Social Services	12,328	7,864	11,852	8,616	10,740	10,075	36,700
Direct Aid	1,365,251	1,408,478	1,411,275	1,330,525	648,619	636,553	630,646
Economic Development	108,436	114,592	194,135	217,074	609,857	283,575	286,297
Emergency Management	-	-	-	255,996	134,533	124,492	-
Emergency Services	2,196,824	1,982,181	2,673,176	1,886,887	1,685,000	1,585,320	2,061,950
Engineering Services Roads	46,027	2,263	0	-	-	-	-
Facilities Maintenance	880,216	495,605	609,709	553,519	543,300	537,802	542,100
Finance Department	58,602	77,619	54,709	78,017	-	-	105,300
Health Department	59,263	119,444	106,572	73,769	44,498	35,947	82,277
High Falls Park	104,841	89,992	77,889	71,355	71,957	80,410	138,056
Human Resources	631,443	688,044	663,345	715,977	-	0	98,500
Information Technology	624,466	853,065	868,917	676,480	524,846	458,498	466,800
Law enforcement Center	680,666	904,476	801,699	767,954	866,425	852,297	1,111,197
Library	197,675	301,464	290,630	315,658	345,044	339,611	343,765
Magistrate	50,348	106,333	129,137	94,057	117,467	126,521	120,800
Non-Departmental	730,054	852,027	922,898	1,162,543	1,835,712	2,725,532	1,949,337
Parks, Recreation and Tour	191,153	210,226	285,688	236,346	330,235	417,252	280,250
Planning Department	6,626	12,507	41,102	34,511	-	-	-
Probate Court	49,884	73,011	34,795	25,083	33,422	49,143	35,035
Procurement	14,265	11,689	9,986	8,728	11,787	6,111	9,020
Public Defender	150,000	150,000	175,000	212,000	200,000	200,000	200,000

	FY 2010 DEBIT	FY 2011 DEBIT	FY 2012 DEBIT	FY 2013 DEBIT	FY 2014 DEBIT	FY 2015 DEBIT	FY 2016 Budget
Register of Deeds	94,335	76,680	76,759	72,604	69,670	67,096	79,240
Registration & Elections	60,859	45,562	91,463	49,277	45,824	59,091	55,355
Road Department	1,965,210	1,883,281	1,591,583	1,368,601	727,181	496,920	520,300
Rural Fire	-	-	-	788,905	438,364	479,837	-
Sheriff	780,128	1,118,239	1,086,859	1,112,171	822,808	1,393,372	922,750
Soil and Water	16,150	26,372	24,988	25,739	26,423	27,833	41,638
Solicitor	10,000	600	942	1,023	2,131	626	1,500
Solid Waste	1,604,752	2,121,673	2,100,416	1,839,837	1,748,208	1,860,124	1,879,600
South Cove Park	93,522	97,352	76,487	137,118	101,336	126,158	161,364
Tax Collector	260,283	220,614	284,497	272,289	268,691	242,755	281,245
Treasurer	89,030	147,689	159,331	139,650	122,340	138,985	157,510
Vehicle Maintenance	1,187,189	92,634	102,723	75,934	74,645	77,443	86,450
Veterans' Affairs	8,418	10,336	4,807	4,243	4,653	4,779	7,200
Zoning	4,649	3,696	-	-	-	-	-
	16,174,083	17,693,197	17,454,015	16,744,060	14,922,211	15,970,603	15,235,761

Expenditures for general fund, these amounts do not include Other Financing Uses.

PERSONNEL EXPENSES

General Fund	FY 2010 Actual	FY 2011 Actual	FY 2012 Actual	FY 2013 Actual	FY 2014 Actual	FY 2015 Actual	FY 2016 Budget
Salaries Total	15,329,126	15,438,124	16,081,936	16,773,645	17,306,573	17,266,643	18,590,550
Percent of Total Expense	34.57%	36.74%	38.19%	39.07%	42.51%	42.03%	41.51%
Benefits Total	6,865,463	7,000,534	8,413,524	7,836,381	7,543,199	7,847,358	7,938,693
Percent of Total Expense	15.48%	16.66%	19.58%	28.22%	18.97%	19.10%	19.01%
Total Personnel Cost	22,194,589	22,438,658	24,495,460	24,560,752	24,851,772	25,114,001	26,529,243
Percent of Total Expense	50.05%	51.41%	58.17%	57.347%	62.48%	61.13%	63.52%



NUMBER OF PERSONNEL

General Fund	FY 2007	FY 2008	FY 2009	FY 2010	FY 2011	FY 2012	FY 2013	FY 2014	FY 2015	FY 2016
General Government	99	97	98	96	96	98	94	90	88	91
Public Safety	158	158	177	172	170	175	184	185	195	200
Transportation	42	43	43	43	43	40	41	41	42	42
Judicial Services	31	32	33	35	36	35	35	36	36	35
Health & Welfare	4	4	4	4	4	4	4	4	4	4
Public Works	44	43	40	37	37	37	37	38	38	38
Culture & Recreation	31	31	31	32	31	31	31	32	32	35
Economic Development	2	2	2	2	3	4	2	4	4	4
Total Expenditures Summary	411	410	428	421	420	424	428	430	439	449
Positions not Filled	0	0	0	0	0	0	0	8	11	13



	FY 2007	FY 2008	FY 2009	FY 2010	FY 2011	FY 2012	FY 2013	FY 2014	FY 2015	FY 2016
General Government										
Administrative Services	-	-	-	-	-	-	-	11	11	-
Administrator	2	2	2	2	2	3	3	2	2	3
County Attorney	-	-	-	-	-	-	-	-	-	2
County Council	1	1	1	1	1	1	1	1	1	1
Facilities Maintenance	11	11	10	10	11	11	11	11	11	12
Finance	7	8	8	9	8	7	6	-	-	7
Human Resources	5	4	4	4	4	4	5	-	-	4
Information Technology	13	8	8	10	9	12	10	7	5	5
Planning	3	4	3	3	3	2	1	-	-	-
Procurement	4	3	3	3	3	3	2	2	2	2
Register of Deeds	5	5	5	4	4	4	4	4	4	4
Registration and Elections	2	2	2	2	2	2	2	2	2	2
Soil and Water	-	-	-	-	-	-	-	-	1	1
Vehicle Maintenance	15	15	14	14	14	14	14	14	14	14
Assessor	14	18	21	17	18	18	18	18	19	19
Auditor	7	7	7	7	7	7	7	7	7	6
Delinquent Tax Collector	4	3	3	3	3	3	3	3	3	3
Treasurer	6	6	7	7	7	7	7	7	6	6
Total General Administration	99	97	98	96	96	98	94	89	88	91
Public Safety										
Animal Control	6	6	6	6	6	6	6	6	6	6
Community Development	10	11	11	9	9	7	9	9	11	11
Communications	19	18	18	18	18	22	22	22	21	21
Coroner	1	1	1	1	1	1	1	1	1	1
Detention Center	27	28	36	36	36	31	35	36	46	49
Emergency Services	3	3	16	12	13	20	3	3	3	20
Rural Fire	4	4	-	-	-	-	17	17	17	
Sheriff's Office	88	87	89	90	87	88	91	91	90	92
Total Public Safety	158	158	177	172	170	175	184	185	195	200

	FY 2007	FY 2008	FY 2009	FY 2010	FY 2011	FY 2012	FY 2013	FY 2014	FY 2015	FY 2016
Transportation										
Airport	5	5	5	5	5	4	4	4	4	4
Roads and Bridges	37	38	38	38	38	36	37	37	38	38
Total Transportation	42	43	43	43	43	40	41	41	42	42
Judicial Services										
Clerk of Court	10	11	10	10	10	10	10	11	12	11
Magistrate	9	9	9	9	9	9	9	9	9	9
Probate Court	5	5	6	6	7	6	6	6	6	6
Solicitor	7	7	8	10	10	10	10	10	9	9
Total Judicial Services	31	32	33	35	36	35	35	36	36	35
Health and Welfare										
Legislative Delegation	1	1	1	1	1	1	1	1	1	1
Veteran's Affairs	3	3	3	3	3	3	3	3	3	3
Total Health and Welfare	4	4	4	4	4	4	4	4	4	4
Public Works										
Soil and Water	1	1	1	1	1	1	1	1	-	-
Solid Waste	43	42	39	36	36	36	36	38	38	38
Total Public Works	44	43	40	37	37	37	37	39	38	38
Culture and Recreation										
Library	18	18	18	18	18	18	18	18	18	18
Parks, Recreation, and Tourism	13	13	13	14	13	13	13	14	14	17
Total Culture and Recreation	31	31	31	32	31	31	31	32	32	35
Economic Development	2	2	2	2	3	4	2	4	4	4
Total Governmental Activities	411	410	428	421	420	424	428	430	439	449

COST TO SERVE ANALYSIS

Revenues and Other Financing Sources for FY 2015-2016 Budget

General Fund

	FY 2016 Budget
Property Tax	32,067,610
Intergovernmental	3,248,103
Licenses, Permits and Fees	2,985,625
Fines and Forfeitures	311,300
Charges for Services	1,694,600
Interest and Investment Income	437,700
Miscellaneous and Other	211,063
Other Financing Sources	892,003
Total FY 2016 Approved Budget	41,848,004

Expenditures and other Financing Uses for FY 2015-2016 Budget

General Fund

	Total Cost	Net Cost	Mills Needed	Percent of Budget	Operational Costs	Personnel Costs	Total FTE FY 2016	Cost per Employee
General Government	10,391,144	9,058,502	18.35	24.83%	4,336,623	4,615,184	91	50,716
Public Safety	17,048,426	18,007,118	30.11	40.74%	4,826,762	12,208,526	200	61,043
Transportation	3,468,740	2,986,310	6.13	8.29%	1,141,183	2,327,557	42	55,418
Public Works	3,845,587	2,937,566	6.44	8.71%	1,879,600	1,765,987	38	46,473
Culture and Recreation	2,901,652	2,880,007	5.12	6.93%	988,420	1,717,967	35	49,085
Judicial Service	2,748,240	2,218,852	4.85	6.57%	530,505	2,217,735	35	63,364
Health and Welfare	943,045	1,041,923	1.67	2.25%	756,823	186,222	4	46,556
Economic Development	505,013	566,295	0.89	1.21%	286,297	218,716	4	54,679
Other Financing Uses	196,157	-	0.35	0.47%	196,157	-	-	-
Total FY 2016 Approved Budget	41,848,004	39,696,573	73.90	100%	14,942,370	25,257,894	449	



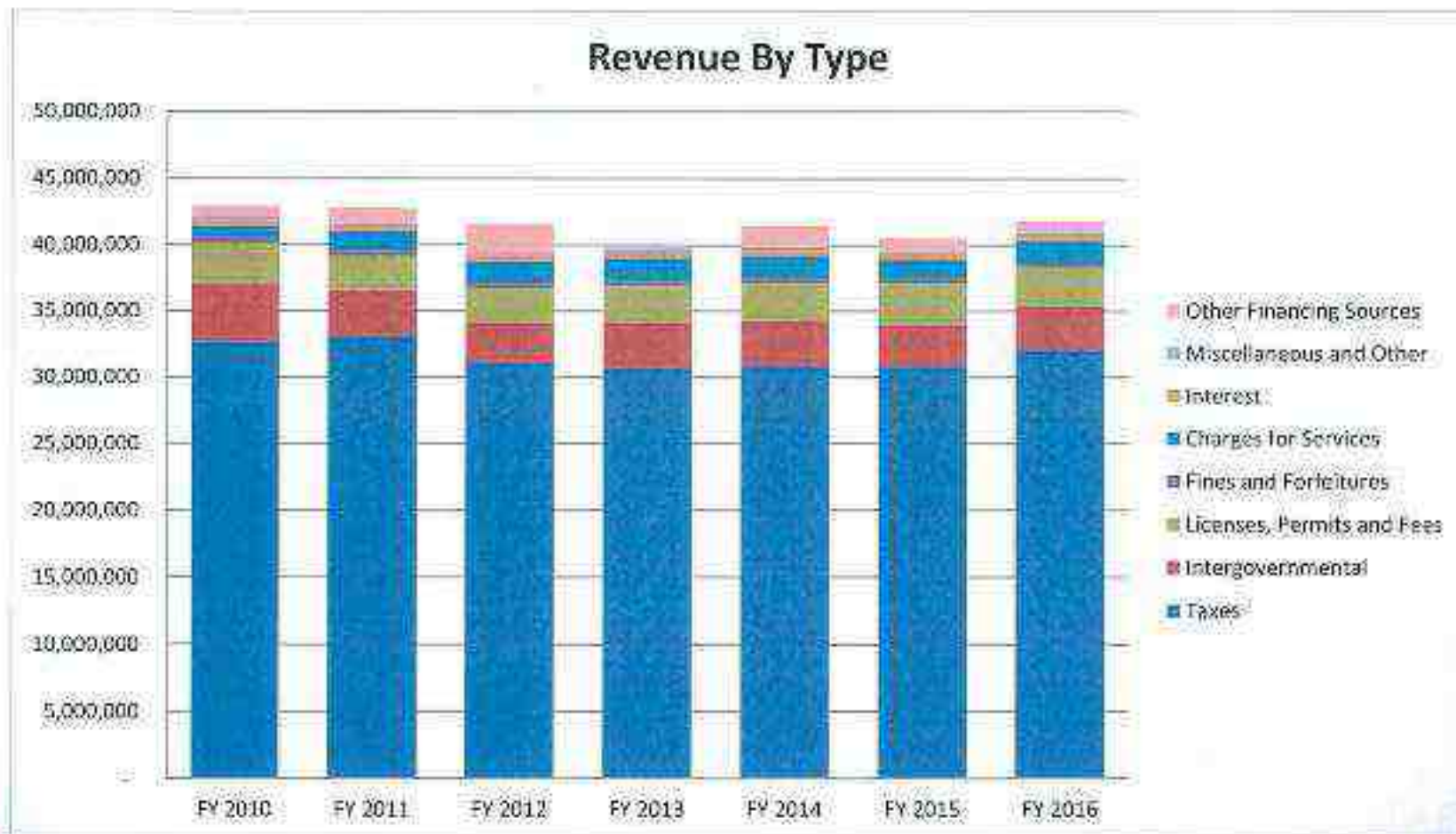
REVENUE HISTORY

Revenue	FY 2010 Actual	FY 2011 Actual	FY 2012 Actual	FY 2013 Actual	FY 2014 Actual	FY 2015 Actual	FY 2016 Budget
Taxes	32,669,967	33,103,802	31,099,988	30,660,362	30,781,995	30,770,115	32,067,610
Intergovernmental	4,386,082	3,429,861	2,988,928	3,460,182	3,435,084	3,205,335	3,248,103
Licenses, Permits and Fees	3,062,181	2,649,168	2,658,935	2,846,954	2,929,329	3,125,355	2,985,625
Fines and Forfeitures	460,477	397,693	368,911	333,203	360,186	291,686	311,300
Charges for Services	855,538	1,449,809	1,681,043	1,714,530	1,706,415	1,511,531	1,694,600
Interest	461,059	358,725	375,681	272,002	416,735	471,617	437,700
Miscellaneous and Other	208,990	218,145	141,721	363,469	195,472	128,377	211,063
Other Financing Sources	824,279	1,182,505	2,258,974	452,880	1,638,938	992,819	892,003
	42,928,573	42,789,709	41,574,181	40,103,582	41,464,154	40,497,835	41,848,004



REVENUE HISTORY

GENERAL FUND



MILLAGE RATE TRENDS

Millage Rate Trend										
	FY 2007	FY 2008	FY 2009	FY 2010	FY 2011	FY 2012	FY 2013	FY 2014	FY 2015	FY 2016
Operating	64.3	64.1	64.1	63.9	61.1	58.9	58.9	57.6	57.6	57.6
Debt Service	4.1	4.1	4.1	1.6	1.9	6.0	6.0	6.0	6.0	6.0
Economic Development	1.0	1.0	1.0	1.0	1.0	1.0	1.0	2.2	2.2	2.2
Emergency Services Protection	-	2.9	2.9	2.9	2.9	2.9	2.9	2.9	2.9	2.9
Bridges and Culverts	1.0	1.0	1.0	1.0	1.0	1.0	1.0	1.0	1.0	1.0
Road Maintenance	-	-	-	-	-	-	-	2.1	2.1	2.1
Tri-County Tech Operations	2.6	2.1	2.1	2.7	2.1	2.1	2.1	2.1	2.1	2.1
Total County Millage	73	75.2	75.2	73.1	70	71.9	71.9	73.9	73.9	73.9

Assessed Value				
Fiscal Year End	Real Property	Personal Property	Other	Total Taxable Assessed Value
FY 2004	163,279,640	41,923,931	136,897,152	342,100,723
FY 2005	173,662,370	42,187,445	136,610,252	352,460,067
FY 2006	183,221,480	40,272,285	183,827,876	407,321,641
FY 2007	255,586,460	39,243,746	141,572,055	436,402,261
FY 2008	274,733,180	39,153,407	143,279,238	457,165,825
FY 2009	295,542,685	37,818,501	139,742,088	473,103,274
FY 2010	309,318,820	34,204,632	141,652,366	485,175,818
FY 2011	308,416,974	32,632,445	173,553,229	514,602,648
FY 2012	313,231,359	41,706,217	163,031,512	517,969,088
FY 2013	318,171,344	35,811,449	161,574,917	515,557,710
FY 2014	322,552,303	41,212,757	157,529,631	521,294,691
FY 2015	320,742,833	40,299,075	164,301,126	525,343,034



OCONEE COUNTY, SOUTH CAROLINA
ASSESSED VALUE AND ESTIMATED ACTUAL VALUE OF TAXABLE PROPERTY
LAST TEN FISCAL YEARS

Year	Real Property	Personal Property	Other	Total Taxable Assessed Value	Total Direct Tax Rate Applied	Estimated Actual Taxable Value	Taxable Assessed Value as a Percentage of Actual Taxable Value
2006	\$ 183,221,480	\$ 40,272,285	\$ 183,827,876	\$ 407,321,641	75.6	\$ 6,925,984,344	5.88 %
2007	255,586,460	39,243,746	141,572,055	436,402,261	73.0	7,787,962,417	5.60
2008	274,733,180	39,153,407	143,279,238	457,165,825	72.3	8,240,526,066	5.55
2009	295,542,685	37,818,501	139,742,088	473,103,274	72.3	8,465,109,305	5.59
2010	309,318,820	34,204,632	141,652,366	485,175,818	70.0	8,780,990,487	5.53
2011	308,416,974	32,632,445	173,553,229	514,602,648	67.1	8,896,160,854	5.78
2012	313,231,359	41,706,217	163,031,512	517,969,088	69.0	9,021,922,673	5.74
2013	318,171,344	35,811,449	161,574,917	515,557,710	69.0	9,047,217,892	5.70
2014	322,552,303	41,212,757	157,529,631	521,294,691	71.0	9,142,100,263	5.70
2015	320,742,833	40,299,075	164,301,126	525,343,034	71.0	9,169,352,176	5.73

Source: Oconee County Auditor

Note: Property in the County was reassessed at December 31, 2005 and 2010, which is reflected in the taxable assessed values stated above for fiscal years ended June 30, 2007 and 2012.

OCONEE COUNTY, SOUTH CAROLINA
DIRECT AND OVERLAPPING PROPERTY TAX RATES
LAST TEN FISCAL YEARS

	<u>2006</u>	<u>2007</u>	<u>2008</u>	<u>2009</u>	<u>2010</u>	<u>2011</u>	<u>2012</u>	<u>2013</u>	<u>2014</u>	<u>2015</u>
Oconee County:										
Operating	68.0	64.3	64.1	64.1	63.9	61.1	58.9	58.9	57.6	57.6
Debt service	4.5	4.1	4.1	4.1	1.4	1.9	6.0	6.0	6.0	6.0
Economic development	1.0	1.0	1.0	1.0	1.0	1.0	1.0	1.0	2.2	2.2
Bridges and culverts	-	1.0	1.0	1.0	1.0	1.0	1.0	1.0	1.0	1.0
Road Maintenance	-	-	-	-	-	-	-	-	2.1	2.1
Tri-County Tech Operations	2.1	2.6	2.1	2.1	2.7	2.1	2.1	2.1	2.1	2.1
Total Oconee County	<u>75.6</u>	<u>73.0</u>	<u>72.3</u>	<u>72.3</u>	<u>70.0</u>	<u>67.1</u>	<u>69.0</u>	<u>69.0</u>	<u>71.0</u>	<u>71.0</u>
School District										
Operating	123.0	113.0	109.8	110.5	111.4	107.1	101.4	110.1	110.1	110.1
Debt Service	18.0	18.0	31.0	31.0	31.0	31.0	31.0	31.0	31.0	31.0
Total School District	<u>141.0</u>	<u>131.0</u>	<u>140.8</u>	<u>141.5</u>	<u>142.4</u>	<u>138.1</u>	<u>132.4</u>	<u>141.1</u>	<u>141.1</u>	<u>141.1</u>
Special Districts										
City of Seneca	50.0	50.0	50.0	52.3	52.3	52.3	52.3	52.3	34.9	36.4
City of Salem	30.0	30.0	30.0	31.0	32.4	32.4	32.4	32.4	55.3	55.3
City of Walhalla	84.0	84.0	84.0	84.0	84.0	84.0	84.0	84.0	84.0	84.0
City of West Union	39.0	39.0	39.0	40.3	41.3	41.3	42.0	45.0	46.0	46.0
City of Westminster	88.0	88.0	88.0	90.7	90.7	90.7	90.7	90.7	90.7	97.3
Emergency Services Protection District	-	-	2.9	2.9	2.9	2.9	2.9	2.9	2.9	2.9
Keowee fire special district	14.5	13.7	14.0	13.5	14.5	14.4	14.5	14.5	14.5	14.5
Total Special Districts	<u>305.5</u>	<u>304.7</u>	<u>307.9</u>	<u>314.7</u>	<u>318.1</u>	<u>318.0</u>	<u>318.8</u>	<u>321.8</u>	<u>328.3</u>	<u>336.4</u>
Total direct and overlapping rates	<u>522.1</u>	<u>508.7</u>	<u>521.0</u>	<u>528.5</u>	<u>530.5</u>	<u>523.2</u>	<u>520.2</u>	<u>531.9</u>	<u>540.4</u>	<u>548.5</u>

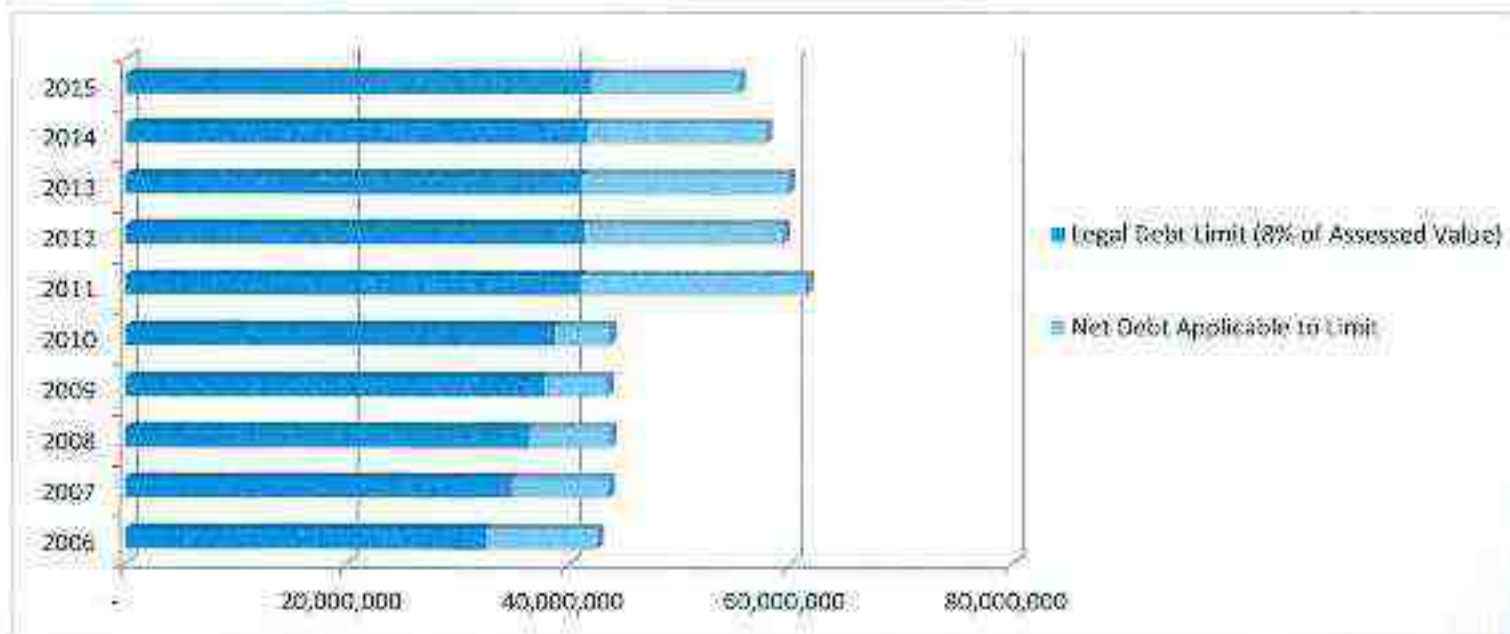
Source: Oconee County Auditor

Note:

Overlapping rates are those of local and county governments that apply to property owners within Oconee County, South Carolina. Not all overlapping rates apply to all of Oconee County, South Carolina property owners (e.g., the rates for the city or special district apply only to the portion of the government's property owners whose property is located within the geographic boundaries of the city or special district).

DEBT MARGIN

	2008	2009	2010	2011	2012	2013	2014	2015
Assessed Value of Taxable Property	457,165,825	473,103,274	485,175,818	514,602,648	517,969,088	515,557,710	521,294,691	525,343,034
Legal Debt Limit (8% of Assessed Value)	36,573,266	37,848,262	38,814,065	41,168,212	41,437,527	41,244,517	41,703,575	42,027,443
Net Debt Applicable to Limit	7,194,310	5,589,155	4,857,888	20,261,341	17,844,513	18,531,441	16,054,198	13,282,472
Legal Debt Margin	29,378,956	32,259,107	33,956,177	20,906,871	23,593,014	22,713,176	25,649,377	28,744,971



OCONEE COUNTY, SOUTH CAROLINA

**LEGAL DEBT MARGIN INFORMATION
LAST TEN FISCAL YEARS**

Legal Debt Margin Calculation for Fiscal Year 2013

Assessed valuation	\$ 525,343,034
Debt limit - 8 percent of total assessed value	42,027,443
Debt applicable to limit:	
General obligation bonds	14,965,178
Less: amount set aside for repayment of general obligation bonds	<u>(1,682,706)</u>
Debt qualifying for margin	<u>13,282,472</u>
Legal debt margin	<u>\$ 28,744,971</u>

	Fiscal Year									
	2006	2007	2008	2009	2010	2011	2012	2013	2014	2015
Assessed Value of Taxable Property	\$ 407,321,641	\$ 436,402,261	\$ 457,165,825	\$ 473,103,274	\$ 485,175,818	\$ 514,602,648	\$ 517,969,088	\$ 515,557,710	\$ 521,294,691	\$ 525,343,034
Legal Debt Limit*	\$ 32,585,731	\$ 34,912,181	\$ 36,573,266	\$ 37,848,262	\$ 38,814,065	\$ 41,168,212	\$ 41,437,527	\$ 41,244,617	\$ 41,703,575	\$ 42,027,443
Net Debt Applicable to Limit	10,032,782	8,661,015	7,194,310	5,589,155	4,857,888	20,261,341	17,844,513	18,531,441	16,054,198	13,282,472
Legal debt margin	<u>\$ 22,552,949</u>	<u>\$ 26,251,166</u>	<u>\$ 29,378,956</u>	<u>\$ 32,259,107</u>	<u>\$ 33,956,177</u>	<u>\$ 20,906,871</u>	<u>\$ 23,593,014</u>	<u>\$ 22,713,176</u>	<u>\$ 25,649,377</u>	<u>\$ 28,744,971</u>
Total net debt applicable to the limit as a percentage of debt limit	30.79%	24.81%	19.67%	14.77%	12.52%	49.22%	43.08%	44.93%	38.50%	31.60%

Source:

Oconee County Auditor and Oconee County Treasurer

* Calculated at eight percent of the total taxable assessed value.

Note: Under South Carolina Constitution Article X, Section 14, 7(a), Oconee County's outstanding general obligation debt should not exceed 8 percent of the total assessed property value.

FUND BALANCE BREAKDOWN

Fund Balance as of June 30, 2015

	General Fund	Capital Projects	Economic Development	Other Govt.	Total
Cash	13,420,565	1,919,204	409,509	3,386,563	19,135,841
Investments	785,793	-	3,000,000	5,950,000	9,735,793
Other Non-Cash Assets	10,497,970	58,646	5,841,940	1,743,954	18,142,510
Total	24,704,328	1,977,850	9,251,449	11,080,517	47,014,144
Outstanding Liabilities	2,264,561	1,176,750	86,149	539,275	4,066,735
Deferred Inflows or Resources	1,006,297	36,830	25,329	602,610	1,671,066
Fund Balance	21,433,470	764,270	9,139,971	9,938,632	5,737,801
	24,704,328	1,977,850	9,251,449	11,080,517	11,475,602

Fund Balance Description

Non spendable	7,893,345	-	5,812,217	195,693	13,901,255
Restricted	-	764,270	3,327,754	9,748,369	13,840,393
Assigned	5,859,340	-	-	-	5,859,340
Unassigned	7,680,785	-	-	(5,430)	7,675,355
	21,433,470	764,270	9,139,971	9,938,632	41,276,343



OCONEE COUNTY, SOUTH CAROLINA
FUND BALANCES OF GOVERNMENTAL FUNDS
LAST TEN FISCAL YEARS

	Fiscal Year									
	2006	2007	2008	2009	2010	2011	2012	2013	2014	2015
General Fund										
Reserved	\$ 679,695	\$ 599,901	\$ 179,781	\$ 590,626	\$ 4,734,890					
Unreserved	13,918,914	12,868,375	18,107,692	22,832,404	19,663,178					
Total General fund	<u>\$ 14,598,609</u>	<u>\$ 13,468,276</u>	<u>\$ 18,287,473</u>	<u>\$ 23,423,030</u>	<u>\$ 24,398,068</u>					
All Other Governmental Funds										
Reserved	\$ 1,885,917	\$ 10,196,048	\$ 11,265,793	\$ 11,422,123	\$ 18,103,322					
Unreserved, reported in:										
Special revenue funds	3,847,185	-	-	-	2,471,822					
Debt service funds	-	-	-	-	-					
Capital projects funds	1,026,126	965,737	4,459,452	2,962,854	-					
Total all other governmental funds	<u>\$ 6,759,228</u>	<u>\$ 11,161,785</u>	<u>\$ 15,725,245</u>	<u>\$ 14,384,977</u>	<u>\$ 20,575,144</u>					
Total all governmental funds	<u>\$ 21,357,837</u>	<u>\$ 24,630,061</u>	<u>\$ 34,012,718</u>	<u>\$ 37,808,007</u>	<u>\$ 44,973,212</u>					
General Fund										
Nonspendable						\$ 4,824,890	\$ 7,473,784	\$ 7,575,436	\$ 7,974,903	\$ 7,893,345
Restricted							1,401,505	-	-	-
Assigned						7,338,896	8,236,071	6,319,226	6,201,707	5,859,340
Unassigned						13,008,265	7,521,789	7,912,690	7,956,354	7,680,785
Total General fund						<u>\$ 25,172,051</u>	<u>\$ 24,633,149</u>	<u>\$ 21,807,352</u>	<u>\$ 22,132,964</u>	<u>\$ 21,433,470</u>
All Other Governmental Funds										
Nonspendable						\$ 4,782,859	\$ 5,150,854	\$ 5,120,760	\$ 5,715,670	\$ 6,007,910
Restricted						23,000,044	21,761,098	31,810,874	23,056,108	12,010,393
Committed						-	-	-	-	1,830,000
Assigned						4,720,626	6,514,510	-	1,418,771	-
Unassigned						(219,951)	(21,702)	-	-	(5,430)
Total all other governmental funds						<u>\$ 32,283,378</u>	<u>\$ 33,404,760</u>	<u>\$ 36,931,634</u>	<u>\$ 30,190,549</u>	<u>\$ 19,842,873</u>
Total all governmental funds						<u>\$ 57,455,429</u>	<u>\$ 58,037,909</u>	<u>\$ 58,738,986</u>	<u>\$ 52,323,513</u>	<u>\$ 41,276,343</u>

Note: GASB 54 was implemented during fiscal year 2011.

GENERAL FUND BALANCE SHEET COMPARISON

	FY 2010	FY 2011	FY 2012	FY 2013	FY 2014	FY 2015
Assets:						
Cash and Cash Equivalents	12,581,439	7,114,859	10,368,020	3,607,909	6,418,825	13,420,565
Investments	8,987,406	14,113,032	7,569,416	11,634,438	8,809,714	785,793
Taxes Receivable, Net	1,073,178	978,560	1,092,507	1,055,764	1,261,407	1,077,748
Accounts Receivable, Net	259,023	742,912	421,754	281,877	320,184	132,763
Due from other Governments	1,712,855	942,028	881,642	705,007	765,882	815,276
Due from other Funds	-	-	-	-	-	578,838
Due from Component Unit	-	-	-	-	-	-
Advances to other Funds	210,000	1,463,964	4,098,245	4,185,966	4,720,876	4,894,174
Prepaid Expenditures	401,748	330,155	264,713	399,446	225,899	6,656
Inventories	182,908	176,509	228,310	175,748	173,068	182,071
Seized Assets	-	-	-	-	-	-
Assets held for resale	13,364	10,005	53,397	60,251	101,035	56,419
Assets held for Economic Development	2,754,025	2,754,025	2,754,025	2,754,025	2,754,025	2,754,025
Total Assets	28,175,746	28,646,049	27,642,029	24,870,521	25,556,915	24,704,328

CONTINUED



BALANCE SHEET COMPARISON

	FY 2010	FY 2011	FY 2012	FY 2013	FY 2014	FY 2015
Liabilities						
Accounts Payable	1,821,369	2,401,879	1,535,080	1,516,098	1,857,622	1,769,306
Accrued Liabilities	749,639	334,635	670,833	576,948	458,845	493,057
Unearned Revenues	-	-	-	-	2,737	2,195
Total Liabilities	2,571,008	2,736,514	2,205,913	2,093,046	2,319,204	2,264,561
Deferred Inflows of Resources						
Unavailable Revenue - Property Taxes	665,450	727,479	749,570	909,872	1,003,712	949,878
Unavailable Revenue - Intergovernmental	577,856	-	-	-	-	-
Unavailable Revenue - Forfeited Land Commission	13,364	10,005	53,397	60,251	101,035	56,419
Total Deferred Inflows of Resources	1,256,670	737,484	802,967	970,123	1,104,747	1,006,297
Fund Balances						
Nonspendable:						
Prepaid Expenditures	401,748	330,155	264,713	399,446	225,899	6,656
Inventories	182,908	176,509	228,310	175,748	173,068	182,071
Assets held for Resale	13,364	10,005	53,397	60,251	101,035	56,419
Assets held for Economic Development	2,754,025	2,754,025	2,754,025	2,754,025	2,754,025	2,754,025
Long-Term Portion of Receivables	-	119,587	105,094	-	-	-
Advances to other Funds	180,000	1,434,609	4,068,245	4,185,966	4,720,876	4,894,174
Restricted:						
Capital Projects	-	-	1,401,505	-	-	-
Assigned:						
Solid Waste Reserve	2,811,628	2,811,628	2,811,628	2,611,628	2,411,628	2,297,700
Health Care Reserve	2,965,644	3,215,644	3,215,644	3,215,644	3,215,644	2,592,895
OPEB Reserve	-	-	-	-	-	622,749
Other Purposes	463,209	-	-	-	-	-
Subsequent Year's Budget	1,202,845	1,311,621	2,208,799	491,954	574,485	345,096
Unassigned:						
Unassigned	13,422,697	13,008,265	7,521,789	7,912,690	7,956,354	7,680,785
Total Fund Balances	24,398,068	25,172,051	24,633,149	21,807,352	22,132,964	21,433,470
Total Liabilities, Deferred Inflows of Resources, and Fund Balances	28,175,746	28,646,049	27,642,029	24,870,521	25,556,915	24,704,328



OCONEE COUNTY, SOUTH CAROLINA

**BALANCE SHEET
GOVERNMENTAL FUNDS
JUNE 30, 2015**

	<u>General</u>	<u>Capital Projects</u>	<u>Economic Development</u>	<u>Other Governmental Funds</u>	<u>Total Governmental Funds</u>
ASSETS					
Cash and cash equivalents	\$ 13,420,565	\$ 1,919,204	\$ 409,509	\$ 3,386,563	\$ 19,135,841
Investments	785,793	-	3,000,000	5,950,000	9,735,793
Taxes receivable, net	1,077,748	-	29,723	214,803	1,322,274
Accounts receivable, net	132,763	-	-	61,515	194,278
Due from other governments	815,276	58,646	-	591,943	1,465,865
Due from other funds	578,838	-	-	-	578,838
Due from component unit	-	-	-	680,000	680,000
Advances to other funds	4,894,174	-	-	-	4,894,174
Prepaid expenditures	6,656	-	-	1,533	8,189
Inventories	182,071	-	-	-	182,071
Seized assets	-	-	-	194,160	194,160
Assets held for resale	56,419	-	-	-	56,419
Assets held for economic development	2,754,025	-	5,812,217	-	8,566,242
Total assets	<u>\$ 24,704,328</u>	<u>\$ 1,977,850</u>	<u>\$ 9,251,449</u>	<u>\$ 11,080,517</u>	<u>\$ 47,014,144</u>
LIABILITIES					
Accounts payable	\$ 1,769,306	\$ 1,176,750	\$ 86,149	\$ 290,234	\$ 3,322,439
Due to other funds	-	-	-	2,275	2,275
Accrued liabilities	493,057	-	-	5,691	498,748
Advances from other funds	-	-	-	60,000	60,000
Unearned revenue	2,198	-	-	181,075	183,273
Total liabilities	<u>2,264,561</u>	<u>1,176,750</u>	<u>86,149</u>	<u>539,275</u>	<u>4,066,735</u>
DEFERRED INFLOWS OF RESOURCES					
Unavailable revenue - property taxes	949,878	-	25,329	185,032	1,160,239
Unavailable revenue - seized property	-	-	-	194,160	194,160
Unavailable revenue - intergovernmental	-	36,830	-	223,418	260,248
Unavailable revenue - forfeited land commission	56,419	-	-	-	56,419
Total deferred inflows of resources	<u>1,006,297</u>	<u>36,830</u>	<u>25,329</u>	<u>602,610</u>	<u>1,671,066</u>
FUND BALANCES					
Nonspendable:					
Prepaid expenditures	6,656	-	-	1,533	8,189
Inventories	182,071	-	-	-	182,071
Assets held for resale	56,419	-	-	-	56,419
Assets held for economic development	2,754,025	-	5,812,217	-	8,566,242
Seized assets	-	-	-	194,160	194,160
Advances to other funds	4,894,174	-	-	-	4,894,174
Restricted for:					
General government	-	-	-	15,221	15,221
Public safety	-	-	-	2,549,299	2,549,299
Transportation	-	-	-	779,674	779,674
Culture and recreation	-	-	-	315,699	315,699
Judicial services	-	-	-	136,458	136,458
Education	-	-	-	1,044,835	1,044,835
Health and welfare	-	-	-	11,791	11,791
Economic development	-	-	-	1,088	1,088
Capital projects	-	764,270	1,497,754	3,211,598	5,473,622
Debt service	-	-	-	1,682,706	1,682,706
Committed:					
OJRSA	-	-	1,830,000	-	1,830,000
Assigned:					
Solid waste reserve	2,297,700	-	-	-	2,297,700
Health care reserve	2,592,895	-	-	-	2,592,895
OPEB reserve	622,749	-	-	-	622,749
Subsequent year's budget	345,996	-	-	-	345,996
Unassigned	7,680,785	-	-	(5,430)	7,675,355
Total fund balances	<u>21,433,470</u>	<u>764,270</u>	<u>9,139,971</u>	<u>9,938,632</u>	<u>41,276,343</u>
Total liabilities, deferred inflows of resources, and fund balances	<u>\$ 24,704,328</u>	<u>\$ 1,977,850</u>	<u>\$ 9,251,449</u>	<u>\$ 11,080,517</u>	<u>\$ 47,014,144</u>

The accompanying notes are an integral part of these financial statements.

OCONEE COUNTY, SOUTH CAROLINA
RECONCILIATION OF THE GOVERNMENTAL FUNDS BALANCE SHEET
TO THE STATEMENT OF NET POSITION
JUNE 30, 2015

Total fund balances for governmental funds:		\$ 41,276,343
Amounts reported for governmental activities in the statement of net position are different because:		
Capital assets used in governmental activities are not financial resources and, therefore, are not reported in the funds.		132,178,534
Other long-term assets are not available to pay for current period expenditures and, therefore, are deferred in the funds.		1,671,066
Certain long-term liabilities are not due and payable in the current period and are therefore not reported in the funds. All liabilities, both current and long-term, are reported in the Statement of Net Position net of issuance premiums, discounts, and refunding deferral amounts.		
General obligation bonds	\$ (15,645,178)	
Unamortized refunding deferral amount on general obligation bonds	8,897	
Capital lease obligations	(1,844,489)	
Special source revenue bonds	(2,758,000)	
Other post-employment benefits	(2,828,196)	
Post-closure care liabilities	(2,297,700)	
Compensated absences payable	(1,250,214)	
Net pension liability	<u>(30,832,038)</u>	
Total long-term liabilities		(57,446,918)
Interest on long-term debt is not accrued in governmental funds, but rather is recognized as an expenditure when due.		<u>(185,417)</u>
Net position of governmental activities		<u>\$ 117,493,608</u>

The accompanying notes are an integral part of these financial statements.

CAPITAL PROJECTS FUND

Economic Development Capital Project Fund

	<u>FY 2011</u> <u>Actual</u>	<u>FY 2012</u> <u>Actual</u>	<u>FY 2013</u> <u>Actual</u>	<u>FY 2014</u> <u>Actual</u>	<u>FY 2015</u> <u>Actual</u>	<u>FY 2016</u> <u>Budget</u>
Revenues	1,030,000	1,027,048	571,389	2,555,212	3,252,139	2,065,200
Expenditures	352,552	154,927	1,487,256	7,908,039	1,422,663	2,812,000
Other Financing Sources	4,670,761	-	5,979,157	1,306,977	72,725	-
Beginning Fund Balance	-	5,348,209	6,220,330	11,283,620	7,237,770	9,139,971
Ending Fund Balance	<u>5,348,209</u>	<u>6,220,330</u>	<u>11,283,620</u>	<u>7,237,770</u>	<u>9,139,971</u>	<u>8,393,171</u>



CAPITAL PROJECTS FUND

Bridge and Culverts Capital Project Fund

	<u>FY 2011</u> <u>Actual</u>	<u>FY 2012</u> <u>Actual</u>	<u>FY 2013</u> <u>Actual</u>	<u>FY 2014</u> <u>Actual</u>	<u>FY 2015</u> <u>Actual</u>	<u>FY 2016</u> <u>Budget</u>
Revenues	-	529,030	511,500	513,227	700,898	506,000
Expenditures	44,182	34,861	99,509	545,982	678,299	1,725,000
Other Financing Sources	1,113,830	100,000	1,145,946	-	-	-
Beginning Fund Balance	-	1,069,648	1,663,817	3,221,754	3,188,999	3,211,598
Ending Fund Balance	<u>1,069,648</u>	<u>1,663,817</u>	<u>3,221,754</u>	<u>3,188,999</u>	<u>3,211,598</u>	<u>1,992,598</u>



CAPITAL PROJECTS FUND

CAPITAL PROJECTS FUND

Available Funds

Law Enforcement Center

LEC (Jail)

514,803.43

General Capital Projects

AIP 20

9,582.13

Solid Waste Equipment Replacement

50,711.50

Pointe West Project

61.02

South Cove Building Renovations

67,536.19

Settlement Project

158,405.18

Total General Capital Projects

286,296.02

Total Audited Balance as of 06/30/2015

801,099.45



2014-2015 Capital Projects Fund	Police West Project	Dearden Center LTCM #6	AP 25 Rampart 802 & Approach	Sold Waste Equipment Replacement	South Cow Housing Redevelopment	Berkshire Project	Total All Fund Balances
ASSETS							
CASH & CASH EQUIVALENTS	25,000.00	1,016,791.17	-3,106.00	50,711.50	67,815.80	151,405.18	1,516,703.07
INTEREST RECEIVABLE							0.00
ACCOUNTS RECEIVABLE							0.00
INVENTORY							0.00
COM OTHER GOVTS			29,500.00				66,250.00
							0.00
TOTAL ASSETS	25,000.00	1,016,791.17	-3,106.00	50,711.50	67,815.80	151,405.18	1,577,625.05
LIABILITIES AND FUND BALANCES							
LIABILITIES							
ACCOUNTS PAYABLE	50,000.00	556,898.41	12,823.00		79.90		619,797.31
RETAINAGE PAYABLE		714,529.00					714,529.00
DEFERRED REVENUE - UNREALIZED							0.00
DEFERRED REVENUE - UNAVAILABLE			4,531.00				4,531.00
PROPERTY TAXES ALLOW FOR UNCOLLECT (TAX)							0.00
INTERGOVERNMENTAL							0.00
DUE TO/FROM GENERAL FUND							0.00
TOTAL LIABILITIES	50,000.00	1,271,957.41	17,354.00	0.00	79.90	0.00	1,279,391.31
FUND BALANCES							
	61.00	514,831.43	6,047.00	50,711.50	47,935.15	151,405.18	761,991.26
TOTAL FUND BALANCES	61.00	514,831.43	6,047.00	50,711.50	47,935.15	151,405.18	761,991.26
TOTAL LIAB AND FB	50,061.00	1,276,788.84	23,401.00	50,711.50	47,945.05	151,405.18	1,341,382.52

2014-2015 Capital Projects Fund	Police West Project	Dearden Center LTCM #6	AP 25 Rampart 802 & Approach	Sold Waste Equipment Replacement	South Cow Housing Redevelopment	Berkshire Project	Total All Fund Revenues
REVENUES							
TAXES							0.00
INTERGOVERNMENTAL			223,434.83	64,200.00			287,634.83
MISCELLANEOUS AND OTHER							0.00
IN LIEU OF TAXES AND FRANCHISE FEES							0.00
INTEREST INCOME	0.00	16,744.15					16,744.15
TOTAL REVENUE	0.00	16,744.15	223,434.83	64,200.00	0.00	0.00	304,379.08
EXPENDITURES							
CURRENT OPERATING							
CAPITAL ACQUISITIONS	0.00	13,591,075.40	100,707.54		135,771.40		13,827,554.34
INVENTORY (EXCEPT FOR ASSET REPLACEMENT)							0.00
BOND ISSUANCE COSTS							0.00
TOTAL EXPENDITURES	0.00	13,591,075.40	100,707.54	0.00	135,771.40	0.00	13,827,554.34
EXCESS/DEFICIT OF REVENUE OVER EXPENDITURES	0.00	-13,574,331.25	23,727.25	64,200.00	-135,771.40	0.00	-13,481,175.40
OTHER FINANCING SOURCES/USES							
PROCEEDS FROM DEBT ISSUANCE							0.00
SPECIAL ITEM							0.00
TRANSFERS IN FROM OTHER FUNDS							0.00
TRANSFERS OUT TO ROADS & BRIDGES							0.00
TRANSFERS OUT TO ECONOMIC DEVELOPMENT							0.00
TRANSFERS IN/OUT WITHIN FUND	0.00	0.00	0.00	-13,568.50	204,500.15	-84,332.73	0.00
Insurance Proceeds							25,000.00
TOTAL FINANCING SOURCES	0.00	0.00	0.00	-13,568.50	204,500.15	-84,332.73	25,000.00
CHANGE IN NET POSITION OF REVENUES AND OTHER FINANCING SOURCES OVER EXPENDITURES AND OTHER USES	0.00	-13,574,331.25	23,727.25	50,631.50	67,725.75	-84,332.73	-13,481,175.40
FUND BALANCE, BEGINNING OF YEAR	61.00	14,011,442.10	16,140.00	0.00	-1,221.00	151,405.18	14,207,767.28
PRIOR PERIOD ADJUSTMENT TO FUND BALANCE	0.00	0.00	0.00	0.00	0.00	0.00	0.00
FUND BALANCE (DEFICIT), END OF YEAR	61.00	467,110.85	40,867.25	50,711.50	47,709.15	151,405.18	707,825.28
Ending Fund Balance Plus Deferred Revenue	\$ 61.00	\$ 467,110.85	\$ 40,867.25	\$ 50,711.50	\$ 47,709.15	\$ 151,405.18	\$ 707,825.28
Assets in lieu of taxes other than bonds to be sold	\$ -	\$ -	\$ -	\$ -	\$ -	\$ -	\$ -
Payables	\$ 61,000.00	\$ 514,831.43	\$ 12,823.00	\$ 50,711.50	\$ 47,935.15	\$ 151,405.18	\$ 737,706.26
Other Assets							

BUDGET CALENDAR

FISCAL YEAR 2016-2017 BUDGET CALENDAR

January 2016

S	M	T	W	T	F	S
					1	2
3	4	5	6	7	8	9
10	11	12	13	14	15	16
17	18	19	20	21	22	23
24	25	26	27	28	29	30
31						

- 5 Regular Council Meeting 6:00 P. M.
- 11 BUDGET PACKETS TO DEPARTMENT HEADS/ELECTED OFFICIALS
- 19 Regular Council Meeting 6:00 P. M.
- 29 BUDGET PACKETS DUE FROM DEPARTMENT HEADS/ELECTED OFFICIALS

February 2016

S	M	T	W	T	F	S
	1	2	3	4	5	6
7	8	9	10	11	12	13
14	15	16	17	18	19	20
21	22	23	24	25	26	27
28	29					

- 2 Regular Council Meeting 6:00 P. M.
- 5 STRATEGIC PLANNING MEETING
- 16 Regular Council Meeting 6:00 P. M.

March 2016

S	M	T	W	T	F	S
		1	2	3	4	5
6	7	8	9	10	11	12
13	14	15	16	17	18	19
20	21	22	23	24	25	26
27	28	29	30	31		

- 7 Regular Council Meeting 6:00 P. M.
- 15 Regular Council Meeting 6:00 P. M.
- 22 Budget Committee (pre budget presentation by Administrator)

April 2016

S	M	T	W	T	F	S
					1	2
3	4	5	6	7	8	9
10	11	12	13	14	15	16
17	18	19	20	21	22	23
24	25	26	27	28	29	30

- 5 Regular Council Meeting 6:00 P. M.
- 12 Special Called Council Meeting 6:00 P. M. - Administrator's Recommended Budget presentation, - Oconee County School Board Presentation
- 19 Regular Council Meeting 6:00 P. M. - FIRST READING OF BUDGET ORDINANCES
- 18D Special Called Council Meeting - Tri-County Technical College Budget Presentation
- 22 Budget Committee 6:00 P. M.

May 2016

S	M	T	W	T	F	S
1	2	3	4	5	6	7
8	9	10	11	12	13	14
15	16	17	18	19	20	21
22	23	24	25	26	27	28
29	30	31				

- 3 Regular Council Meeting 6:00 P. M. - SECOND READING OF BUDGET ORDINANCES
- Public Hearing Advertisement Submitted To Paper (min. 15 days in Advance)
- 17 Regular Council Meeting 6:00 P. M.
- 24 Budget Committee Meeting 6:30 P.M.
- 31 Special Called Council Meeting 6:00 P. M. - PUBLIC HEARINGS REGARDING BUDGET ORDS

June 2016

S	M	T	W	T	F	S
	1	2	3	4	5	6
7	8	9	10	11	12	13
14	15	16	17	18	19	20
21	22	23	24	25	26	28
28	29	30				

- 2 Regular Council Meeting 6:00 P. M.
- 9 Budget Committee Meeting 6:30 P.M. (only if deemed to be required)
- 16 Regular Council Meeting 6:00 P. M. - THIRD & FINAL READING OF BUDGET ORDINANCES



REVENUE PROJECTIONS

Revenue	Budget FY 2016	Projected FY 2017	Increase (Decrease)
Taxes	32,067,610	32,100,000	32,390
Intergovernmental	3,248,103	3,254,388	6,285
Licenses, Permits and Fees	2,985,625	2,874,916	(110,709)
Fines and Forfeitures	311,300	282,000	(29,300)
Charges for Services	1,694,600	1,707,750	13,150
Interest	437,700	400,000	(37,700)
Miscellaneous and Other	211,063	210,000	(1,063)
Other Financing Sources	892,003	1,041,003	149,000
	41,848,004	41,870,057	22,053

* Based on a 6 year average.



	FY 2010	FY 2011	FY 2012	FY 2013	FY 2014	FY 2015	FY 2016	FY 2015-12	FY 2016	FY 2017
					Actual	Actual	Budget	Year	Projected	Projected
010-001-0005-2400 CS-5-24 Court Park	151,000	154,000	171,000	154,721	187,150	186,931	185,000	75,779	191,472	185,000
010-001-0005-2000 CS-10-24-2400 Pkt	147,000	141,000	113,100	139,326	121,981	123,653	125,000	51,745	124,515	125,000
010-001-0005-2300 CS-10-24-2300 Pkt	27,000	29,000	28,149	55,583	22,334	36,671	30,000	13,250	38,222	36,000
010-001-0005-3200 AFSA-24-24-3200 Pkt	-	-	-	-	-	-	-	18,500	-	-
010-001-0005-3200 AFSA-24-24-3200 Pkt	-	-	-	-	-	-	-	65	150	150
010-001-0005-3200 AFSA-24-24-3200 Pkt	-	-	-	-	-	-	-	900	1,200	1,200
010-001-0005-3400 AFSA-24-24-3400 Pkt	-	-	-	-	-	-	-	124	250	250
PRT	327,000	324,000	338,249	305,147	339,585	338,999	325,750	171,600	356,034	338,250
010-000-0005-11000 LP Library Fines and Fees	40,619	41,314	43,200	41,840	43,276	39,086	42,000	18,583	37,056	40,000
010-000-0005-11100 MD Accessions Staff	-	500	500	2,175	2,385	1,850	-	100	1,780	1,900
010-000-0005-11100 CS-24-24-11100 LP	381	-	-	-	-	-	-	-	-	-
010-000-0005-11100 LP	1,595	2,140	2,162	2,496	2,080	530	2,300	-	-	-
010-000-0005-11100 LP	-	-	-	-	206	1,858	2,000	628	1,416	1,200
010-000-0005-11111 LP	1,252	1,549	3,467	3,619	1,114	-	-	-	-	-
Assessors	1,637	4,089	5,927	6,704	5,967	4,136	3,300	738	2,610	2,800
010-000-0005-12500 LP Tax Collectors Fees	51,484	55,292	51,938	37,821	55,448	65,266	56,000	15,240	53,450	55,000
010-000-0005-10510 LP Vehicle Decal Fee	66,606	62,796	61,796	62,408	62,847	63,166	63,000	28,873	64,400	66,000
010-000-0005-11800 LP Clerk of Court	526,072	458,652	467,973	413,715	315,114	278,163	330,000	124,858	262,745	300,000
010-000-0005-12400 LP Probate Judge	-	372	-	-	-	-	-	32,733	-	-
010-000-0005-12400 LP Probate Judge	4,0379	18,547	148,681	117,757	98,889	104,514	102,000	45,114	97,800	100,000
010-000-0005-12400 LP Probate Judge	1,345	4,321	8,562	6,738	9,310	6,405	6,000	1,916	7,750	8,000
010-000-0005-12400 LP Probate Judge	-	-	7	750	-	350	-	-	-	-
010-000-0005-12400 LP Probate Judge	3,065	1,143	7,993	7,465	7,465	6,450	7,600	4,000	5,145	8,000
010-000-0005-12400 LP Probate Judge	270	660	600	570	500	450	500	600	600	600
010-000-0005-12400 MD Probation Clerk	15,544	14,731	12,827	18,864	17,416	17,200	16,500	20,121	21,700	25,000
010-000-0005-12400 LP Probate Judge	4,900	4,305	4,690	5,759	5,200	3,960	5,000	3,600	5,240	5,500
010-000-0005-12400 LP Probate Judge	3,150	1,225	2,851	2,720	2,625	3,335	2,700	2,110	3,625	3,000
010-000-0005-12400 LP Probate Judge	25	133	70	30	30	15	-	24	-	-
010-000-0005-12400 LP Probate Judge	1,108	4,450	1,657	1,689	712	1,022	1,100	-	-	-
Probate Judge	178,279	148,997	166,531	164,834	142,200	143,668	142,426	79,368	149,045	149,900
010-000-0005-1960 LP Magistrate	479,665	395,564	387,791	351,862	359,389	268,473	310,000	78,323	241,000	280,000
010-000-0005-1960 LP Magistrate	1,329	1,167	2,794	1,029	2,180	2,930	1,000	1,185	1,300	1,300
010-000-0005-1960 LP Magistrate	39,687	77,916	78,754	71,538	75,109	90,120	71,000	12,632	75,050	75,000
010-000-0005-1990 LP 25th Annual Trial	813	729	1,211	1,321	768	1,229	1,300	388	954	1,300
010-000-0005-1960 LP 45th	613	1,141	5,807	5,817	7,023	5,285	5,000	1,640	4,650	5,000
Magistrate	529,508	481,917	456,173	415,956	441,612	372,007	328,300	138,707	362,463	363,800
010-000-0005-1960 LP Road Department	-	-	-	1,209	-	-	-	-	-	-
010-000-0005-1960 LP Road Department	1,391	-	-	-	-	10,637	8,000	7,269	12,900	10,000
010-000-0005-1960 LP Road Department	-	-	-	-	-	4,867	-	-	-	-
010-000-0005-1960 MD State	-	1,915	2,927	2,132	8,146	6,475	6,000	4,130	-	6,000
010-000-0005-1960 LP Road Dept	264	1,366	2,691	3,467	3,163	6,260	7,500	3,348	-	6,500
Roads	1,391	3,271	4,668	6,805	23,145	30,614	17,500	18,737	13,900	22,500

	FY 2010	FY 2011	FY 2012	FY 2013	FY 2014 Actual	FY 2015 Actual	FY 2016 Budget	FY 2016 1/2 Year	FY 2016 Projected	FY 2017 Projected
01000-0300-1100 LF Building Code	107,829	110,142	105,595	127,112	178,879	146,758	49,000	22,521	215,000	500,000
01000-0300-1110 LF Building Code/Other Fees/Fees	15,645	15,825	17,205	13,990	15,450	10,723	15,000	8,360	15,370	16,300
01000-0300-1120 LF Professional Fee/Reg/Other	17,219	21,792	21,990	41,216	75,936	63,336	45,000	24,472	55,800	57,000
01000-0300-1130 LF Building Plan Review Fees	600	1,325	500	1,000	600	200	1,300	125	1,620	2,000
01000-0300-1140 Code Book Review - Comm Dev					644			52	200	200
01000-0300-1150 Code Book Review - Building Code	1,255	1,580	87	583	519	105	500	93	100	150
01000-0300-1170 LF Occupancy - Parking		15	101	70	206	192	200		300	100
01000-0300-1124 LF Planning Land Use Appeal		177	237	321	587	733	400	400	200	550
01000-0300-1151 LF Zoning Appeal						75				
01000-0300-1153 LF Zoning Appeal Fee						17,810	10,000	7,076	15,800	15,000
01000-0300-1154 LF Zoning Appeal Fee						(28,010)				
Community Development	453,798	360,345	347,400	485,422	583,347	620,877	364,603	254,937	603,540	591,400
010-091-00525-87715 GC Sign Erection Reimb Revenue						37,913	-	3,068	37,000	17,000
010-080-00905-00800 MO Sci & Water	6,138	6,139	6,139			6,139	6,139		6,139	6,139
010-080-00905-00801 1P Repair Pave To Top	543	3,381	1,991	2,385	2,399	2,747	3,400	729	2,320	3,000
010-080-00905-00802 1P SWV Repair Pave	459,438	72,847	134,500	284,565	405,678	605,908	810,000	680,836	858,000	600,000
010-080-00905-00803 1P SWV Repair Pave	108,900	157,750	403,504	258,328	131,058	211,957	275,000	105,730	138,404	250,000
010-080-00905-00804 1P SWV Side of Road	41,764	38,800	31,729	30,921	31,760	35,700	35,000	16,629	37,930	35,000
010-080-00905-00805 1P SWV All Types of Work	28,207	29,602	28,300	26,145	26,496	29,413	28,000	2,000	29,154	29,500
Soils Waste	859,458	1,180,919	1,200,325	1,142,528	1,200,131	1,120,374	1,150,400	621,773	1,207,067	1,218,000
010-080-00905-00806 1P Soils Waste	65,052	89,925	110,044	114,525	117,236	114,623	117,000	35,138	114,570	115,500
010-080-00905-00807 1P Soils Waste - Other	6,000	6,000	6,000	5,400	6,000	5,775	6,000	7,130	5,297	5,500
010-080-00905-00808 1P Soils Waste	1,000	1,000	1,000	1,150	1,000	4,700	3,000	1,675	1,000	1,500
010-080-00905-00809 1P Soils Waste - Other	7,146	4,516	3,029	2,295	2,027	1,127	1,300	920	1,350	1,300
010-080-00905-00810 1P Soils Waste - Road Work	5,200	4,800	4,800	4,800	4,800					
010-080-00905-00811 1P Soils Waste - Road Work	4,800	4,800	4,800	2,800						
010-080-00905-00812 1P Soils Waste - Road Work			950							
010-080-00905-00813 1P Soils Waste - Road Work	7,950	950	950	950	3,850	3,000	950		950	950
010-080-00905-00814 1P Soils Waste - Road Work	750	1,200	1,400	3,040	1,840	3,400	2,700	2,549	1,520	1,000
010-080-00905-00815 1P Soils Waste - Road Work	520	500	500	500	500	600	600	600	1,120	1,000
010-080-00905-00816 1P Soils Waste - Road Work		650	1,000	3,120	1,830	3,370	3,000	1,000	3,820	4,000
010-080-00905-00817 1P Soils Waste - Road Work	208,200	288,000	266,112	267,035	139,145	214,489	220,000	141,721	300,000	225,000
010-080-00905-00818 1P Soils Waste - Road Work	325,051	322,144	263,057	514,834	109,775	465,396	500,000	274,580	450,000	500,000
Apport	547,824	667,924	900,620	667,847	826,074	718,351	885,350	459,023	790,950	602,750
010-080-00905-00819 1P Soils Waste - Road Work	70,000	17,400	17,943	21,672	21,239	26,414	24,000	20,092	34,280	15,000
010-080-00905-00820 1P Soils Waste - Road Work	480,136	436,095	440,980	510,395	484,335	581,571	610,000	225,461	523,060	550,000
010-080-00905-00821 1P Soils Waste - Road Work				2,220	2,320	2,220	2,000	1,150	2,190	2,500
Register of Deeds	500,148	456,100	438,627	631,267	528,030	614,205	620,000	245,706	581,470	587,500

Questions ?





The 2016 Annual Report Oconee County Council

An Administrative Summary



The 2016 Annual Report to Oconee County Council

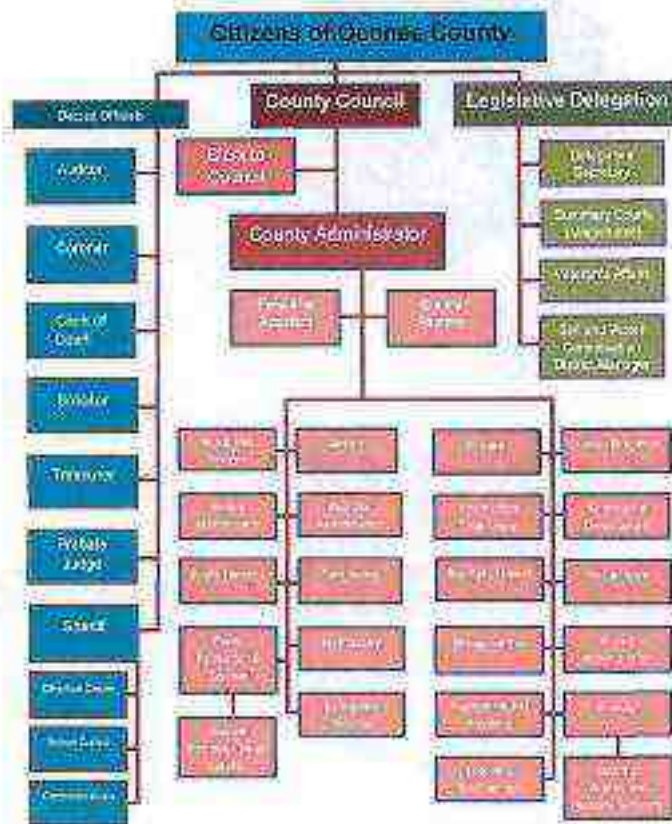
An Administrative Summary

Oconee's Seal symbolizes Oconee's rich Native American history. "Oconee" (Ae-quo-nee) is an ancient Cherokee word meaning "land beside the water." The design of the seal reflects the Native American symbols for "land" and "water." The green, upper part of the design is the symbol for mountain while the blue, lower part of the design is the symbol for water - representative of the five main rivers of Oconee: Chattooga, Chauga, Tugaloo, Keowee and Seneca. The blood-red ring around the design is the traditional Cherokee "circle of life" connecting all living things.





Oconee County Organization Chart



The 2016 Annual Report to Oconee County Council

An Administrative Summary

Our Commitment

Annually, for the past several years, County Council and Administration has held a day-long Strategic Planning Retreat to review the previous year's accomplishments, establish goals for the upcoming year, and prioritize longer term goals in preparation for the future.

Below is the list of goals established during the 2015 Retreat:

- | | |
|---------------------------|-----------------------------------|
| Grants Writer | Complete Detention Center |
| TCTC Oconee Campus | Permanent Farmers Market Location |
| Fire Substations | Library – Maintenance/Upgrades |
| Workforce Development | Phase II Sewer South to I-85 |
| Jail Staffing | Broadband Future Management |
| Boating Safety/Fire Boats | 85% Recycling Rate |



The 2016 Annual Report to Oconee County Council

An Administrative Summary

Grants

Writer:

- Position was filled on 11/02/2015
- \$49,500 in funding awarded in the first two months



The 2016 Annual Report to Oconee County Council

An Administrative Summary

Jail Staffing:

- Detention Center personnel are currently interviewing candidates to fill the remaining six new positions
- Final positions are fully funded in the FY 2016 Budget



The 2016 Annual Report to Oconee County Council

An Administrative Summary

TCTC Oconee

Campus:

- Oconee Industry and Technology Park was selected as the Campus location
- Project is currently in the pre-design service phase with McMillian Pazdan Smith and Trehel
- Construction costs have not been finalized, and necessary funding would need to be appropriated



The 2016 Annual Report to Oconee County Council

An Administrative Summary

Phase II of Sewer South to I-85:

- Feasibility study has been completed which identified costs estimates, critical growth areas and possible infrastructure routes
- A comprehensive list of available grant funding opportunities has been identified, and the project will be presented to the funding agencies
- Alternative funding options are under development using Oconee's financial consultant and bond attorneys



The 2016 Annual Report to Oconee County Council

An Administrative Summary

Broadband Future

Management:

- RFQ has been released and two of the four responsive firms have been deemed qualified to pursue the RFP process
- RFP is under development and will be released by the end of February
- Once released, RFP proposals will be evaluated and a recommendation will be made regarding a potential partnership agreement



The 2016 Annual Report to Oconee County Council

An Administrative Summary

Boating Safety/Fire

Boats:

- Completion of Mosquito Point Fire/Rescue Boat Dock
- A Boat is in the water!!!
- Purchase of 2 additional boats will be before County Council in March

Here is the percentage breakdown.

Generation Percentage

	Recycle Center	Municipalities	Commercial/Industrial
2011	39.7%	27.3%	32.2%
2012	38.7%	27.0%	31.9%
2013	38.0%	27.8%	32.9%
2014	38.5%	28.4%	31.8%
2015	38.1%	28.2%	32.1%

Municipality C&D Tonnage (Does Not Include Brush)

	Seneca	Walhalla	Westminster
2013	2132	267	304
2014	1774	317	253
2015	2786	296	404

Here are the charts:

Fiscal Year	Total Transfer Station	Recycle Center's	Seneca	Walhalla	Westminster	West Union	All Paying Customers	Misc. Waste from Residents
2011	36,794	14,603	5,670	2,849	1,418	112	11,857	285
2012	36,633	14,163	5,732	2,645	1,419	97	11,702	875
2013	36,982	14,050	5,927	2,793	1,460	108	12,159	485
2014	37,520	14,443	6,162	2,791	1,599	117	11,934	474
2015	37,691	14,359	6,057	2,958	1,517	106	12,116	578

Total MSW Managed				
	Total Transfer Station	Recycle Centers	Municipalities	Paying Commercial
2011	36,794	14,603	10,049	11,857
2012	36,633	14,163	9,893	11,702
2013	36,982	14,050	10,288	12,159
2014	37,520	14,443	10,669	11,934
2015	37,691	14,359	10,638	12,116



The 2016 Annual Report to Oconee County Council

An Administrative Summary

85%

Recycling:

- Smith and Gardner has submitted a report detailing the various components needed to reach this goal
- \$8 – 10 million plan includes new building for MRF and composting facility along with new legislative action to establish needed regulatory authority
- Alternatives include: Pay as you Throw Program, Modernizing Recycling Center (\$6 – 7 million), Commercial Recycling Program – Expansion (\$1.2 million, \$100,000 annually) and Municipal Partnerships



The 2016 Annual Report to Oconee County Council

An Administrative Summary

The Administration, while focused on those goals, is diligent to maintain optimum efficiency and improve service throughout the County:

Completion of Detention Center: The new Detention Center has been completed! The official move in date was January 29, 2016, and the facility is fully operational.

Permanent Farmers Market Location : This project has evolved into the concept of an Agricultural Center. With the assistance of grant funding, the County will use the services of a third party consultant to conduct an Ag Center Feasibility Study. Now that a piece of property has been identified, this study will better define the scope of the future Ag Center as well as outline a path forward to make the center a reality.



The 2016 Annual Report to Oconee County Council

An Administrative Summary

Fire Substations: Forward progress continues to be made regarding implementation of the Fire Plan and deployment of Substations around the County. The status of current projects is below:

Bountyland Fire Station – personnel is currently working with an architect to create a second design that ensures operational needs can be achieved within the established budget. A site has been selected off of Keowee School Road, north of the Quick Jobs Center on County owned property.

Corinth-Shiloh Substation – Construction is progressing as planned.

Cheohee Valley Substation – Construction is progressing as planned.

Whetstone Substation – amending location of facility on the selected site in order meet site conditions. Materials have been delivered to the site which has been cleared and grubbed. Grading work is scheduled to begin as soon as the property dries.



The 2016 Annual Report to Oconee County Council

An Administrative Summary

Library – Maintenance & Upgrades: The parking lot at the Westminster Branch was upgraded by the County Roads & Bridges Dept. Additionally, Oconee FOCUS was able to ensure that the community centers in Long Creek and Mountain Rest have WiFi. Handicap accessibility has been improved at the Seneca Branch with the installation of electronic opening doors. Additionally, \$150,000 bond has been approved by Council and approximately 16 projects have been compiled and are proceeding through the procurement process.



The 2016 Annual Report to Oconee County Council

An Administrative Summary

While Administration is the management arm of County government, it takes every person in the organization to make the County operate efficiently and successfully. Every member of the Oconee Team plays a vital role in the services we provide

Our success is a result of the diligent and efficient work performed by every member of Team Oconee.



The 2016 Annual Report to Oconee County Council

An Administrative Summary

Services to Citizens

Community & Citizen Services - CEU Airport; Assessor; Auditor; Community Development Office which includes Building Codes, Planning and Permitting; Delinquent Tax Office; Legislative Delegation; four Oconee County Library locations; Oconee FOCUS, (the County's Broadband Project); Parks, Recreation and Tourism; Register of Deeds; Rock Quarry; Voter Services through Registration and Elections; Treasurer's Office; and Veterans Affairs

Judicial Services - Clerk of Court; Solicitor; three Magistrate's Courts; and Probate Court

Law Enforcement and Public Safety - Sheriff's Department, Detention Center and Animal Control / Animal Shelter; Coroner; Emergency Services Division; and Rural Fire

Public Works and Facility Services - Building and Facilities Maintenance; Roads and Bridges; Solid Waste; and Vehicle Maintenance

Administrative Services - Economic Development; Finance; Human Resources; Information Technology; and Procurement



The 2016 Annual Report to Oconee County Council

An Administrative Summary

CEU Airport

The Airport Director and staff manage and operate the Oconee County Regional Airport, which includes a modern terminal, a 5,000 foot runway, GPS navigation facilities, hangars, fuel sales and maintenance services, and a range of additional amenities.

Our Accomplishments:

- Stub Taxiway project completed
- Purchase of two properties for future growth
- Total fuels sales of \$657,540.96



The 2016 Annual Report to Oconee County Council

An Administrative Summary

Oconee County Public Library

The Oconee County Public Library is governed by the Library Board of Trustees, and operates library branches in Westminster, Salem, Seneca, and Walhalla, and a bookmobile that serves additional areas of the county.

Our Accomplishments:

- Purchase of Bookmobile
- Reconstruction of Westminster Branch parking lot
- WiFi servicing Long Creek and Mountain Rest community centers



The 2016 Annual Report to Oconee County Council

An Administrative Summary

Parks, Recreation and Tourism

Oconee Parks, Recreation and Tourism (PRT) manages and operates the county parks, and promotes and expands recreation and tourism in Oconee County.

Our Accomplishments:



- New PRT/South Cove Office - "in-house" project
- Approximately \$56.18 million in tourism revenues for 2014
- Camping revenues increased by 18.9%



The 2016 Annual Report to Oconee County Council

An Administrative Summary





The 2016 Annual Report to Oconee County Council

An Administrative Summary

Emergency Services

Oconee County Emergency Management is responsible for the mitigation of impacts from all disasters through planning, training, education, and effective service delivery as well as managing Rescue Squads and Fire operations in Oconee County whose mission is to provide the most effective, efficient, and professional response to the needs of the citizens and visitors to Oconee County.

Our Accomplishments:

- Substations are moving forward
- 6,563 responses for fire, medical and special teams
- Expanded Special Needs Task Force
- Mobile Command Post placed into service



The 2016 Annual Report to Oconee County Council

An Administrative Summary

Roads & Bridges

The Road and Bridges Department maintains all county roads and bridges, and performs engineering, surveying, and construction services for a variety of county projects; additionally, the department plans for and responds to winter weather events and emergencies as needed.

Our Accomplishments:

- 17.02 lane miles of striping by roads contractor
- Transmap software implementation
- Multiple "in-house" county projects saving the County more than \$1M



Questions or Comments?





The 2016 Annual Report to Oconee County Council

An Administrative Summary

Emergency Services

Oconee County Emergency Management is responsible for the mitigation of impacts from all disasters through planning, training, education, and effective service delivery as well as managing Rescue Squads and Fire operations in Oconee County whose mission is to provide the most effective, efficient, and professional response to the needs of the citizens and visitors to Oconee County.

Our Accomplishments:

- Substations are moving forward
- 6,563 responses for fire, medical and special teams
- Expanded Special Needs Task Force
- Mobile Command Post placed into service



The 2016 Annual Report to Oconee County Council

An Administrative Summary

Roads & Bridges

The Road and Bridges Department maintains all county roads and bridges, and performs engineering, surveying, and construction services for a variety of county projects; additionally, the department plans for and responds to winter weather events and emergencies as needed.

Our Accomplishments:

- 17.02 lane miles of striping by roads contractor
- Transmap software implementation
- Multiple "in-house" county projects saving the County more than \$1M



The 2016 Annual Report to Oconee County Council

An Administrative Summary

Solid Waste

The Solid Waste Department manages and operates all county solid waste facilities, including Manned Convenience Centers, the construction & demolition landfill, and the transfer station.

Our Accomplishments:

- New education programming with KOBA
- Commercial/Industrial recycling program
- In top 3 counties in average price per ton received for recyclables



The 2016 Annual Report to Oconee County Council

An Administrative Summary

Oconee Economic Alliance

The Economic Development Commission propels the county's efforts to recruit, retain, and grow industrial and commercial investment in Oconee County, as well as providing advice to Council and Administration on matters related to economic development.

Our Accomplishments:

- Over \$ 50 million in capital investment and over 425 new jobs
- TCTC Oconee Campus
- Destination Oconee implementation
- #MadeInOC campaign



The 2016 Annual Report to Oconee County Council

An Administrative Summary



The 2016 Annual Report to Oconee County Council

An Administrative Summary

Summary

In closing, I'd personally like to thank the Oconee County Council, elected officials and Oconee County employees for the job they do for this County, our citizens and our visitors.

While facing the challenges of the day-to-day, we have managed to keep an eye on the future, and have continued to utilize every asset to the best of our ability to continue on this path of success. I am extremely proud of what this organization has done, and I know we can keep this momentum going.

I'm proud of what we've done.

I'm committed to what we're doing.

I'm incredibly excited about where we're going.



The 2016 Annual Report to Oconee County Council

An Administrative Summary

Questions or Comments?



Annual Report 2016

An Administrative Review

Annual Report 2016

An Administrative Review



To look back is
to look ahead.

Ben Franklin

A Brief History of Oconee County

Oconee County, located in the northwest corner of South Carolina on the edge of the Blue Ridge Mountains, takes its name from a Cherokee word meaning "land beside the water". The County was formed in 1868 when the State legislature divided Pickens District into Pickens and Oconee Counties.

Native Americans lived here for thousands of years, and this area was home to the Cherokee. Their villages were located near water, good hunting grounds and tillable land. Dwellings in the Cherokee villages were houses not unlike the rustic homes of early European settlers. They farmed hundreds of acres of corn in the rich land along the rivers and maintained peach and apple orchards. During Colonial time the Cherokee were allies and trading partners with the British. They had an extensive trading network including a trading path that extended from Charleston to the Mississippi River and intersected other paths at the Cherokee "lower town" of Keowee. The main path also went through Oconee Town and crossed Oconee Mountain (formerly known as Station Mountain). The British built Fort Prince George across the Keowee River from Keowee Town to protect the Cherokee and the important trade paths.

It was the Cherokee's choice to side with the British during the Revolutionary War, which led to the destruction of their Lower Towns and the loss of most of their tribal land in the Upstate in the Treaty of DeWitt's Corner in 1777. They sold the remainder of their tribal land in South Carolina in the Treaty of 1816, but were not forced to leave and many of their descendants live here today. The Cherokee cultural legacy has become an integral part of our County's heritage.

Following the Revolutionary War, veterans and settlers from other parts of the State began moving in, including a small group of Germans under the leadership of General John A. Wagener and the German Colonization Society of Charleston, South Carolina, who founded and settled the town of Walhalla in 1850. Today, Walhalla serves as the county seat.

A number of Irishmen came to Stumphouse Mountain in the mid-1850's to build the Blue Ridge Railroad that was chartered to connect Charleston with the Midwest. Economic reasons and the Civil War caused the project to fail to meet completion. Stumphouse Tunnel is today a tourist attraction on the National Register of Historic Places.

After the Civil War, the Richmond and Air Line Railroad (now the Southern Railroad) was built through Oconee County, and the present towns of Seneca and Westminster came into being. Large textile mills were built in the Upstate in the 1890's, with Newry in southeast Oconee County remaining as one of the earliest, least-altered textile villages in South Carolina.

As Oconee County welcomed in the new century, textile manufacturing expanded, lumber mills prospered, and agricultural enterprises, such as dairy farms and commercial apple orchards, contributed to the County's economy. By 1960, the County's economy was becoming more diverse with the opening of the Torrington

Company, set to manufacture precision needles, and the plans of Duke Energy to construct electrical energy projects in the County that would ultimately create Lakes Keowee and Jocassee, as well as a nuclear energy facility.

Oconee County continues to be a strong contender in the national and global marketplace. Today, the County's economic diversity can be attributed to a number of high-tech manufacturers that employ a well trained work force able to meet the needs of business and industry. Tourism now plays a vital role in the County's economy, as tourists visit many local and state parks, historical sites, and take part in recreation that includes hiking, waterfall viewing, rafting, and other nature-based activities.

Quality of life in Oconee County is excellent, as measured based on the social and economic environment provided by our freedoms, happiness, material well-being, environmental health, and community life factors. The citizens of Oconee County are committed to fostering economic growth while protecting the natural beauty of the County.



Museum of the Cherokee Official Ribbon Cutting

Oconee County

Community Profile

Established - 1868

County Seat - City of Wadswa

Form of Government - Council, Administrator

Climate

Average January Low	30.3 F
Average July High	89.4 F
Average Annual Rainfall	56.70"
Average Annual Snowfall	3.20"

Population by Municipality (2010)

Salem	135
Seneca	8,102
Wadswa	4,263
West Union	291
Westminster	2,418

Population Trends and Projections

2000	66,215
2010	74,273
2015	77,860
2020	82,300
2025	86,740
2030	91,070
2035	95,460

Components of Population Change

	1990-2000	2000-2009
Births	7,629	7,501
Deaths	5,716	6,455
Net Migration	6,808	4,633

Population Density

Population Density per Square Mile	138.6
------------------------------------	-------

Median Age (2009)

United States	36.8 years
South Carolina	37.6 years
Oconee County	43.4 years

Age Composition (2010)

Age	Number	Percent
Under 5 Years	4,168	5.60%
5 to 9 Years	4,240	5.70%
10 to 14 Years	4,498	6.10%
15 to 19 Years	4,798	6.50%
20 to 24 Years	4,228	5.70%
25 to 29 Years	3,826	5.20%
30 to 34 Years	3,903	5.30%
35 to 39 Years	4,190	5.90%
40 to 44 Years	4,566	6.10%
45 to 49 Years	5,079	6.80%
50 to 54 Years	5,556	7.40%
55 to 59 Years	5,327	7.20%
60 to 64 Years	5,588	7.50%
65 to 69 Years	4,828	6.50%
70 to 74 Years	3,619	4.90%
75 to 79 Years	2,760	3.70%
80 to 85 Years	1,604	2.20%
85 Years & Older	1,295	1.70%

Gender Composition (2010)

Males	36,682	49.40%
Females	37,591	50.60%

Elections

Registered Voters	63,643
Number of Voters Last General Election	31,517
Percentage Voting	61.52%
Voter Precincts	30
Number of Representatives-State	2
Number of Senators-State	2

Housing Characteristics (2010)

Total Housing Units	98,763
Total Homeownership Rate	78.90%
Median Value of Owner-Occupied	126,700
Persons per Household	2.4
Median Household Income	\$42,266

Overview of Oconee County and Our Government

Oconee County

- Oconee's Seal symbolizes Oconee's rich Native American history. "Oconee" (Ae-quo-nee) is an ancient Cherokee word meaning "land beside the water." The design of the seal reflects the Native American symbols for "land" and "water." The green, upper part of the design is the symbol for mountain while the blue, lower part of the design is the symbol for water – representative of the five main rivers of Oconee: Chattooga, Chauga, Tugaloo, Keowee and Seneca. The blood-red ring around the design is the traditional Cherokee "circle of life" connecting all living things.



- Called "The Golden Corner", Oconee County is located in an area known as the "Upstate of South Carolina."
- The land area of Oconee County is 625.41 square miles.
- The geography plays host to significant environmental resources:
 - Sumter National Forest
 - Ellicott Rock Wilderness Area
 - Jocassee Gorge Wilderness Area
 - Campgrounds
 - State and County Parks:
 - Chau Ram County Park
 - High Falls County Park
 - South Cove County Park
 - Devils Fork State Park
 - Lake Hartwell State Park
 - Oconee State Park
 - Oconee Station State Park
 - Coneross Campground
 - Oconee Point
 - Stumphouse Tunnel /Isaqueena Falls Park
 - Rivers:
 - Chauga River
 - Chattooga River
 - Whitewater River

- Little River

- Major Lakes:

- Lake Jocassee
- Lake Keowee
- Lake Hartwell

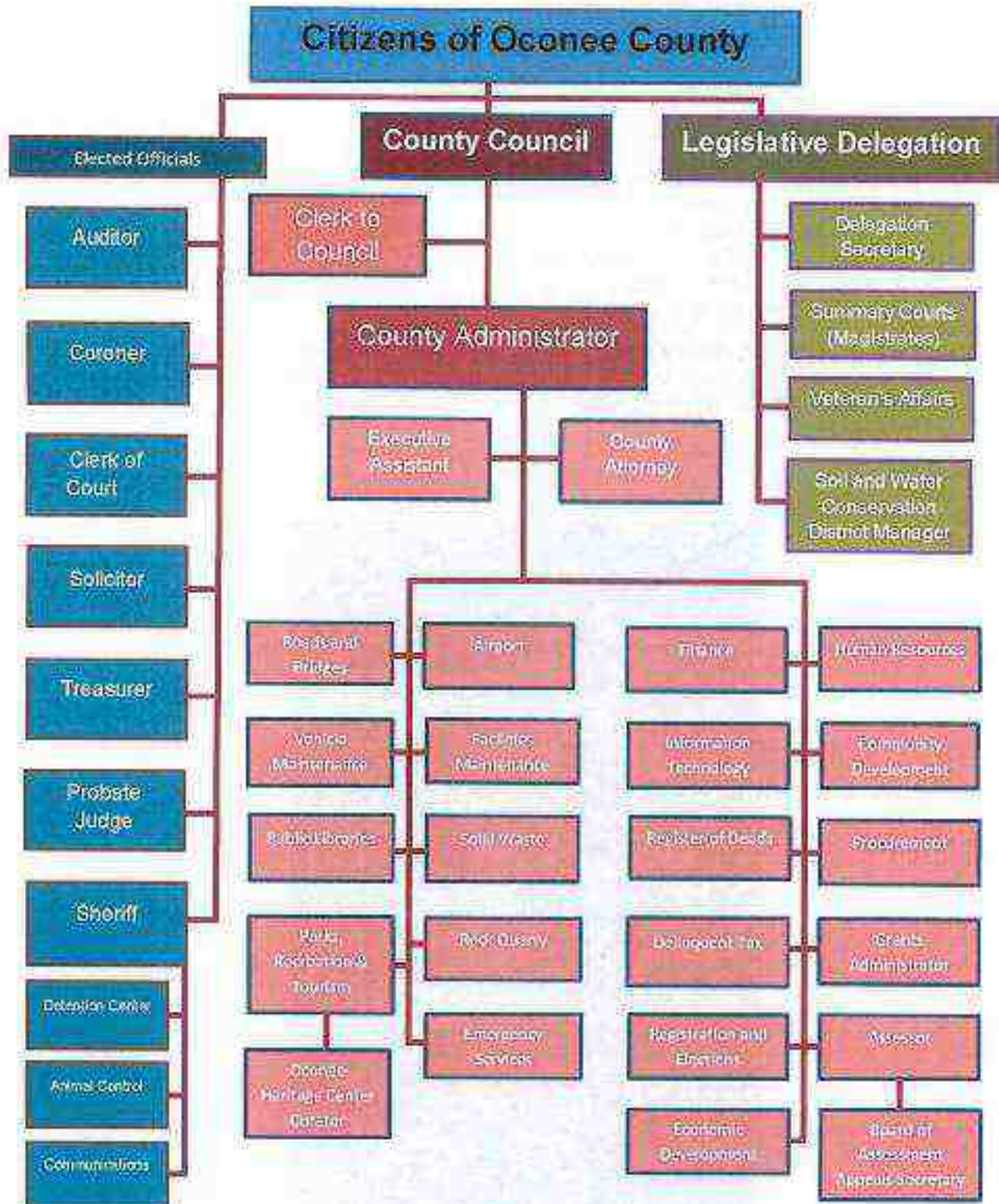
- Oconee County is home to five (5) municipalities:

- Town of Salam
- City of Seneca
- City of Walhalla (County Seat)
- Town of West Union
- City of Westminster

- Oconee County adjoins 10 other counties in 3 states: Anderson and Pickens in South Carolina; Jackson, Transylvania and Macon in North Carolina; and Rabun, Habersham, Stephens, Franklin and Hart in Georgia.



Oconee County Organization Chart



County Government

Form of Government:

- The Council – Administrator form of professional government was approved by voter referendum in November, 2003. Oconee County was formerly under the Council – Elected Supervisor form of government.

County Council:

- Five (5) officials are elected from single-member districts for staggered four-year terms.
- Oconee County's Council Members:

District I	Ms. Edda Cammick, Chairman Pro Tem
District II	Mr. Wayne McGill, Vice Chairman
District III	Mr. Paul A. Cain, Esq., Chairman
District IV	Mr. Joel Thrift
District V	Mr. Reg Dexter

Other County Elected Officials:

- Clerk of Court, Beverly Whitfield
- Coroner, Karl E. Addis
- County Auditor, Kenneth E. Nix
- County Treasurer, Greg Nowell
- Probate Judge, Kenneth E. Johns, Jr.
- Sheriff, Michael Crenshaw
- Solicitor, Chrissy T. Adams

Oconee County Legislative Delegation:

State Senator, South Carolina District #1
The Honorable Thomas C. Alexander

State Representative, South Carolina District #1
The Honorable William R. Whitmire

State Representative, South Carolina District #2
The Honorable William R. (Bill) Sandifer, III

United States Congressman:

South Carolina's 3rd Congressional District
The Honorable Jeff Duncan

United States Senators:

The Honorable Lindsey O. Graham
The Honorable Timothy E. (Tim) Scott

Our Commitment

For the past several years, County Council and Administration has held a day-long Strategic Planning Retreat to review the previous year's accomplishments, establish goals for the upcoming year, and prioritize longer term goals in preparation for the future.

Below is the list of goals established during the 2015 Retreat:

Hire a Grants Writer	Complete Detention Center
Establish TCTC Oconee Campus	Permanent Farmers Market
Fire Substations	Library - Maintenance/Upgrades
Workforce Development	Phase II Sewer South to I-85
Jail Staffing	Broadband Future Management
Boating Safety/Fire Boats	.85% Recycling Rate

With direction and guidance from County Council, the Administration and staff of Oconee County has worked diligently over the past year, and continues to strive to accomplish the goals and exceed the expectations of Council and our citizens.

To highlight our efforts of commitment, the following chart provides a comprehensive reflection on what we, as a County, have done to address last year's short term goals as outlined by Council.

Goal :

Grants Writer:

- Position was filled on 11/02/2015
- \$49,500 in funding awarded in the first two months

Jail Staffing:

- Detention Center personnel are currently interviewing candidates to fill the remaining six new positions
- Final positions funded in FY 2016 Budget

TCTC Oconee Campus:

- Oconee Industry and Technology Park was selected as the Campus location
- Currently in the pre-design service phase with McKillion Pazdan Smith and Trehel
- Construction costs have not been finalized, and necessary funding would need to be appropriated

Phase II Sewer South to I-85:

- Feasibility study is complete identifying cost estimates, critical growth areas and possible infrastructure routes
- A comprehensive list of available grant funding opportunities has been identified, and the project will be presented to a meeting of these six funding agencies
- Alternative funding options are under development using Oconee's financial consultant and bond attorneys

Broadband Future Management:

- RFQ has been released and two of the four responsive firms have been deemed qualified to pursue the RFP process
- RFP is under development and will be released by the end of February
- Once released, RFP proposals will be evaluated and a recommendation will be made regarding a potential partnership agreement

Boating Safety/Fire Boats:

- Completion of Mosquito Point Fire/Rescue Boat Dock
- A boat is in the water!
- Purchase of 2 additional boats will be presented to County Council in March

85% Recycling Rate:

- Smith and Gardner has submitted a report detailing the various components needed to reach this goal
- \$8 to 10 million plan includes new building for MRF and composting facility along with new legislative action to establish needed regulatory authority
- Alternatives include: Pay as you Throw Program, Modernizing Recycling Center (\$6 – 7 million), Commercial Recycling Program - Expansion (\$1.2 million, \$100,000 annually) and Municipal Partnerships

Administration, while focused on Council's prioritized goals outlined above, remained diligent in its efforts to maintain optimum efficiency and improve service throughout the entire organization. The results were successful in advancing progress on a number of items deemed important by Council.

Completion of Detention Center: The new Detention Center has been completed! The official move in date was January 29, 2016, and the facility is fully operational.

Permanent Farmers Market Location: This project has evolved into the concept of an Agricultural Center. With the assistance of grant funding, the County will use the services of a third party consultant to conduct an Ag Center Feasibility Study. Now that a piece of property has been identified, this study will better define the scope of the future Ag Center as well as outline a path forward to make the center a reality.

Fire Substations: Forward progress continues to be made regarding implementation of the Fire Plan and deployment of Substations around the County. The status of current projects is below:

Bountyland Fire Station – personnel is currently working with an architect to create a second design that ensures operational needs can be achieved within the established budget. A site has been selected off of Keowee School Road, north of the Quick Jobs Center on County owned property.

Carinth-Shiloh Substation – Construction is progressing as planned.

Cherokee Valley Substation – Construction is progressing as planned.

Whetstone Substation – amending location of facility on the selected site in order meet site conditions. Materials have been delivered to the site which has been cleared and grubbed. Grading work is scheduled to begin as soon as the property dries.

Library – Maintenance and Upgrades: The parking lot at the Westminster Branch was upgraded by the County Roads & Bridges Dept. Additionally, Oconee FOCUS was able to ensure that the community centers in Long Creek and Mountain Rest have WiFi. Handicap accessibility has been improved at the Seneca Branch with the installation of electronic opening doors. A new Book Mobile has been purchased with a delivery date set for the fall of 2016. Additionally, \$150,000 bond has been approved by Council and approximately 16 projects have been compiled and are proceeding through the procurement process.

Over the last year, we've had a lot of "irons in the fire." I'm extremely proud of and amazed at what the Oconee Team has been able to accomplish. I recognize we still face significant challenges, as every organization does, but seeing how far we have come only solidifies my belief that this County can and will continue its success.

While Administration is the management arm of County government, it takes every person in the organization to make the County operate efficiently and successfully. Every member of the Oconee Team plays a vital role in the services we provide, and our successes are a result of the diligent and efficient work performed by every member of Team Oconee.

Services to Citizens

Oconee County provides a broad spectrum and scope of services to include:

- **Community & Citizen Services** - CEU Airport; Assessor; Auditor; Community Development Office (Building Codes, Planning and Permitting); Delinquent Tax Office; Legislative Delegation; four Oconee County Library Branches; Oconee FOCUS; (the County's Broadband Project); Parks, Recreation and Tourism; Register of Deeds; Rock Quarry; Voter Services through Registration and Elections; Treasurer's Office; and Veterans Affairs.
- **Judicial Services** - Clerk of Court; Solicitor; three Magistrate's Courts; and Probate Court.
- **Law Enforcement and Public Safety** - Sheriff's Department, Detention Center and Animal Control / Animal Shelter; Coroner; Emergency Services Division; and Rural Fire.
- **Public Works and Facility Services** - Building and Facilities Maintenance; Roads and Bridges; Solid Waste; and Vehicle Maintenance.
- **Administrative Services** - Economic Development; Finance; Human Resources; Information Technology; and Procurement.

Oconee County's success is due to EACH and EVERY department's commitment, dedication and diligence.

The following is just a few departmental highlights for the calendar year 2015:

CEU Airport

Jeff Garrison, Airport Director

The Airport Director and staff manage and operate the Oconee County Regional Airport, which includes a modern terminal, a 5,000 foot runway, GPS navigation facilities, hangars, fuel sales and maintenance services, and a range of additional amenities. The Airport continues to make upgrades and improvements aimed at positioning the facility as one of the premier small airports in the region.

During 2015, The Stub Taxiway project was completed improving field maneuverability for aircraft. Maneuverability capacity was further enhanced with new ramp and taxiway marking which is more visible to aircraft. Within the terminal, a number of the rooms were painted and the flight planning room received a "makeover." Regarding equipment, the Jet Fuel truck was refurbished. Additionally, two properties were purchased for future expansion.

Further, recognizing the importance of safety in the context of operating an airport, daily inspections of the ramp, runway and airfield have been implemented.

Finally, combined fuel sales of jet fuel and aviation fuel totaled almost \$658,000 for 2015. These sales were partly fueled by the 2,000 transient aircraft that visited CEU Airport.

Oconee County Public Library

Phillip Cheney, Director

The Oconee County Public Library is governed by the Library Board of Trustees, and operates library branches in Westminster, Salem, Seneca, and Walhalla, and a bookmobile that serves additional areas of the county.

The parking lot at the Westminster Branch was upgraded by the County Roads & Bridges Dept. Additionally, Oconee FOCUS was able to ensure that the community centers in Long Creek and Mountain Rest have WiFi. Handicap accessibility has been improved at the Seneca Branch with the installation of electronic opening doors.

Additionally, the number of digital products available through the Library's web presence has expanded with the addition of Flipster (magazines), Ancestry.com (genealogical information), ValueLine (investment information) and the New York Times newspaper (both current and back files).

Finally, a new Book Mobile has been purchased with a delivery date set for the fall of 2016. A \$150,000 bond has been approved by Council and approximately 16 projects have been compiled and are proceeding through the procurement process.

Parks, Recreation and Tourism

Phil Shirley, PRT Director

Oconee Parks, Recreation and Tourism (PRT) manages and operates the county parks, and promotes and expands recreation and tourism in Oconee County.

The new PRT/South Cove Office was the major project for PRT during 2015. The Facilities Maintenance department, with assistance from PRT Staff and other County departments, took the lead on this project from day one. Staff is currently completing construction of a new County building that will house the South Cove park office, PRT administrative office, public restrooms and the structure will serve as a park store for visitors of the park. The building is approximately 3,500 sq. feet, designed with an Appalachian Rustic Elegance theme, and has a lakefront conference room and break room/catering kitchen capable of hosting a variety of County/Community meetings. In addition, a waterfall/river feature runs parallel to the entrance of the building and will serve as a place for park staff to interpret the many aspects of river life in addition to lake life.

Additional projects include:

- a. *Chau Ram*- replaced and upgraded the trail bridge on the blue trail that had been washed out. The project required demolition of the existing bridge as well as hauling materials in and out of the site location which is located approximately half mile from the parking area.
- b. *High Falls*- installed and enclosed a small maintenance shelter to house maintenance equipment. This addition is an ongoing effort by the park staff to upgrade the entire maintenance (shop) area.

- c. *South Cove*-rebuilt the existing fishing pier. Staff removed all lumber from the aging pier down to the supports and rebuilt the pier to provide an upgraded fishing pier. This site serves as an ADA fishing area as well as the launch location for all of our fishing tournaments hosted at South Cove.
- d. *Programming*- South Cove staff was challenged to increase programming opportunities for the public and experienced a successful year of new programs such as a Spring Break daily activities list, July 4th celebration and a Bou by the Lake celebration.
- e. *Camping*- PRT also completed the first full year under the camping reservation system and experienced a 18.9% increase (\$44,171) in camping for 2015 vs. 2013 (pre-reservation system). Chau Ram increased an amazing 283% in camping equating over \$12,360 camping revenue. High Falls increased 19% showing \$15,578 in additional camping revenue and South Cove increased 11% (\$16,233).

Tourism expenditures for Oconee County reached an all-time high of \$56.18 million in 2014. The report was released recently by South Carolina Parks, Recreation & Tourism and is completed annually by the U.S. Travel Association. The report shows that tourism expenditures grew 4.21% from 2013 and that tourism directly supports 440 travel and tourism jobs in Oconee County with a payroll over \$8.36 million. Tourism is responsible for over \$6.38 million in local and state taxes collected, which reduces the local tax burden of every household by \$165 annually. Oconee County ranks 20th among South Carolina counties and has experienced a 29% growth in tourism spending since 2006, which equals an additional \$12.6 million annually being spent in our local economy today as compared to 2006. We use 2006 as our benchmark as we started the CVB in 2007 and seriously began focusing on tourism through the efforts of the CVB (Convention & Visitors Bureau).

Tourism event recruitment was a major focus for PRT as staff traveled to two national shows each year recruiting top notch events to our area. Each year we host 10-15 large fishing tournaments that have a huge economic impact to our community. For example, a 120 boat fishing tournament which is here for three days equates to over 730 hotel room nights with a direct economic impact of over \$200,000. This does not count the days of practice each angler spends in the area leading up to the event. In addition, we also host Road Titans 300, an international cycling event that is growing each year with riders from 5 different countries and all across the US.



Grants Administration

Sharon DeRidder, Grants Administrator

Recognizing the importance of funding diversification and upholding a desire to remain fiscally responsible, County Council sought the creation of the Grants Administrator position. After interviewing a number of competitive candidates, the position was filled on November 2, 2015.

During the first day on her job, the Grants Administrator jumped straight into working on a grant funded through the South Carolina National Heritage Corridor. As a result of her effort and the hard work of staff, Oconee was recently awarded \$49,500 from this grant opportunity! These funds are to be allocated toward projects that will advance the goals outlined in the Destination Oconee Plan: Gateway Signage, Informational Kiosks and partial funding of an Agricultural Center Feasibility Study. This office has co-authored/assisted with 5 additional grant opportunities that are currently being reviewed by the granting authority.

Rock Quarry

B. Richard Martin, Quarry Manager

The Quarry Manager and staff manage and operate the county-owned rock quarry, and are responsible for all material extraction, processing, and sales activities.

The quarry had another productive and safe year, with our 17 employees working a total of 31,734 hours in 2015 with **ZERO** lost workday injuries, an achievement which continued a safety record that extends back a number of years. We have submitted this information and fully anticipates to be awarded, once again, a Certificate of Achievement in Safety by the United States Department of Labor, Mine Safety, and Health Administration. Another indicator the quality of our operation is that we satisfactorily complete all three unannounced inspections performed by the federal government and state government.

As a commitment to training, the department had three employees complete Mine Safety Health training, two employees completed the SCDOT Coarse Aggregate Level I Tech course and two employees passed COG Management & Supervision training.

Regarding equipment, the following was completed - Secondary Crushing Plant was upgraded, and Komatsu 325-7 Back Dump Haul Trucks (2) and Kawasaki 9527 Wheel Loader were purchased to replace inoperable and dated components.

New equipment combined with staff's work performance translated into a record year for the Rock Quarry: 30,000 transactions, involving more than 501,292 tons of material, were completed.

Sheriff's Office / Detention Center

Mike Crenshaw, Sheriff

The responsibilities of the Sheriff's Office include law enforcement patrol, criminal investigation, traffic enforcement, special teams, animal control, civil process, court security, and management of the detention center.

Sheriff Mike Crenshaw's continued commitment to tackling the problem of illegal drugs resulted in four Operation Infinity drug sweeps in 2015. Over three years, the Sheriff's Office has conducted 12 major drug arrest operations resulting in over 1000 arrests.

Additionally, eight Uniform Patrol vehicles were equipped with AEDs (defibrillators).

Robert Chasteen, correctional officer, and Garrett Bare, deputy, won top honor awards as part of their graduating classes at the South Carolina Criminal Justice Academy.

To increase community awareness and involvement, the Sheriff's Office continued our community meetings around the county with "Coffee with a Cop" meetings in addition to holding the second class of the Citizens Police Academy. The office also held its first summer camp for at-risk youth which allowed us to mentor and build relationships with our youth.

Further, the office participated in the collection of around 3,500 cases of water and other supplies for flood victims in the midlands back in October of 2015. This was a joint effort of all law enforcement and emergency responders in Oconee County that was supported by the leadership of our county.

Animal Shelter

Lt. Mark Lyles, Director

The Oconee County Animal Shelter houses both adoption facilities (managed by the Oconee County Humane Society) and Animal Control (a division of the Sheriff's Department).

For 2015, an outstanding 1,288 adoptions were processed; 277 animals were reunited with their guardians; and more than 250 spay/neuter certificates were awarded. In addition, 674 animals were placed or transported to no kill shelters.

Behind these great numbers were a number of program improvements and new programming at the Animal Shelter. Staff has implemented an adoption counseling and matchmaking service. Staff has also increased the number of new foster parents and expanded the foster program which has resulted in hundreds of dogs and cats being fostered until they could be placed in permanent homes. Additionally, the Animal Shelter has partnered with multiple non-profits to further enhance the department's operation capacity.

Due to the many people who support the Animal Shelter, thousands were raised to help provide funding to the medical fund.

Approximately 1,000 investigations into cruelty, abuse or neglect were conducted. Staff responded to over 1,600 service calls. The department was able to certify two Animal Control Officers as well.

Staff also streamlined paperwork and processing procedures to create efficiencies with ordinance enforcement. Performance improvement was also achieved by reducing the number of running-at-large calls by placing owners in contact with Freedom Fences which provides assistance with placing chained and roaming dogs in kennels.

The staff also developed and implemented a community outreach program focused on lowering intake by placing owners in need with organizations who can assist with provide food or medical care.

Emergency Services

Charlie King, Fire Chief

Scott Krein, Emergency Management Director

Emergency Services is responsible for the mitigation of impacts from all man-made and natural disasters, and minimizing injury and loss of life and property from fire and other emergencies through various avenues, including education, inspection and code enforcement, and maintaining a highly trained and properly equipped force of emergency responders capable of efficiently and safely managing emergency situations throughout Deonee County.

With the assistance of grant funding, the staff is currently working on updates for the Deonee County Hazard Mitigation Plan.

In 2015, a total of 6,563 responses were dispatched for fire, medical and special teams (HAZMAT, Dive Team, and Special Rescue).

The operation Rapid Entry Dive Program trained and equipped twenty three new open water divers to conduct quick entry and rescue. Two rescues were made over the summer in 30 minutes or less! Using grant funding, a state of the art Mobile Command Post was placed into service, replacing a 1973 "bread truck." Staff partnered with Duke Energy to deliver Emergency Medical Training to their security staff, and worked 11-hours a day for 20 days providing fire watch at Ravenel Elementary during construction. Twenty eight personnel responded to and supported rescue and recovery during the statewide flood event. Training participation also increased with twenty six personnel enrolled in EMT program and EMR and Basic Firefighter classes are over flowing with participants.

Regarding equipment, the operation has made the following purchases: Ladder, Engine 1, Rescue 6, Engine 13 and Tanker 13 replacement in addition to the acquisition of (2) Fire/Rescue boats. In addition to these upgrades, Duke Energy donated a 12,000 sqft building that will be utilized for a variety of purposes to support the department's overall mission.

Forward progress continues to be made regarding implementation of the Fire Plan and deployment of Substations around the County. The status of current projects is below:



Corinth-Shiloh Substation



Cheohee Valley Substation Site

Roads and Bridges Department

Mack Kelly, Public Works Director and County Engineer

The Road and Bridges Department maintains all county roads and bridges, and performs engineering, surveying, and construction services for a variety of county projects; additionally, the department plans for and responds to winter weather events and emergencies as needed. For 2015 the department managed 493.9 miles of paved roads, 163 miles of dirt and gravel roads, 26 bridges and mowed 1553 miles.

The Department oversaw the striping improvement of 17.02 lane miles at a cost of \$20,252.49 (performed by contractor). In addition, staff performed the reconstruction of Timberlake One Circle at a cost of \$57,000.

Also, the department acquired Transmap software to help staff assess the current condition of our paved road network. Council can use this information to allocate funds towards

preventative maintenance operations to lengthen the life of good roads, and to identify roads that need immediate attention. Other projects included expressing opposition to devolution of state roads (R2015-08 opposed the state dumping roads to the County), dissolved Stone Pond Special Tax District, widened an at grade rail road crossing along Buffalo Road for two-lane traffic; constructed Lands Bridge and removed old bridge, replaced a failing box culvert at Lonely Road and assisted during the winter storm event and subsequent clean up.

The department also spearheaded a number of county projects by providing "in-house" services. Those projects include the following:

- Constructed Frisbee Golf driveway access for Chau Ram County Park
- Performed site grading and paving of parking area for Coroner's office
- Reconstructed Westminster Library parking area
- Supervised Crack Seal and Seal Coat operations at the Administrative Offices parking areas
- Stabilized site and submitted Notice of Intent (NOI) for Golden Corner Commerce Park mass grading
- Constructed Golden Corners Commerce Park Lift Station access drive and assisted installing water line service to Sanitary Sewer Lift Station serving the park
- Provided rough grading, fine grading, septic tank installation, graded water feature, and grading for sidewalks for South Cove County Park
- Paved the parking area for the Detention Center
- Installed a gate at the Seneca Rail Site
- Constructed Crossroads Rural Fire Department training area and back entrance

Solid Waste Department

Swain Still, Solid Waste Director

The Solid Waste Department manages and operates all county solid waste facilities, including Manned Convenience Centers, the Construction & Demolition Landfill, as well as the Transfer Station.

During 2015, Solid Waste started a commercial/industrial recycling program. Over the last three months, staff has been receiving recyclables from two facilities and has recycled 42 tons of material so far. Staff is in talks with several more industrial facilities and several communities about providing additional recycling services once we receive our commercial front load truck in March 2016.

The importance of recycling cannot be overstated. Recycling should begin at an early age, and to increase our educational program, the department has partnered with Keep Ocoee Beautiful Association to help provide more recycling tools and information to schools and the public.

The department provided recycling center clerks with SC DHEC certified customer service skills training.

Oconee County has been consistently in the top 15 counties in recycling rate and in the top 3 in average price per ton received for recyclables. This is due to the excellent condition (odor and contamination free) of the recyclables. Staff does a great job in keeping the materials from being contaminated.

Year	Total MSW	Total C&D	Recyclables Sold	Recyclables Cost (tons) (paid to dispose tires)	Tipping Fee Revenue	Mulch Sales	Recyclable Revenues	Recyclable Avg. Price Per Ton
2013/2014	37520	18165	2637	259	\$806,260	\$32,780	\$333,038	\$126.29
2014-2015	37691	22133	1122	317	\$840,578	\$38,280	\$211,957	\$99.89

* Measured in tons.

Oconee Economic Alliance

Richard Blackwell, Executive Director

The Oconee Economic Alliance (OEA) propels the county's efforts to recruit, retain, and grow industrial and commercial investment in Oconee County, as well as providing advice to Council and Administration on matters related to economic development.

This year the OEA continued to focus on positioning Oconee County at the forefront of the region in marketability for potential employers. As a result, Oconee had six announcements in 2015 with over \$50 million in new capital investment and over 425 new jobs announced. Oconee was a leader in the Upstate for the successes mentioned. Unemployment in Oconee has dropped from 6.1% in December 2014 to 5.4% in December 2015. On Dec. 31st, 2015 there were more Oconee residents working than EVER BEFORE with 33,801 participating in the labor market. Oconee saw 1,709 of its residents added to pay rolls in 2015.

OEA was selected by County Council to usher in the implementation of the Destination Oconee plan. We are currently in the process of selecting a FTE as the position application process closed Feb. 3rd. It is our intent to have this person on board the first of March 2016 and meet with the task force selected by Council by the end of March 2016.

OEA, with the assistance of the Convention and Visitors Bureau, PRT and Community Development office applied for two grants to assist with items within the "Destination Oconee" plan. One was awarded with the help of Sen. Thomas Alexander in the amount of \$100,000 and the other is a grant through the SC National Heritage Corridor in the amount of \$49,500. Over the next 60 days, we hope to begin utilizing these funds for items such as signage, kiosks and other small items tied to the plan.

OEA worked diligently to acquire site certification status for the Golden Corner Commerce Park and the Seneca Rail Site in 2015 by the SC dept. of Commerce. This is a 9-12 month process. Oconee County now has three county owned industrial parks that are certified by

SC Dept. of Commerce and McCallum Sweeney Consulting. Oconee has over 390,000 square feet of industrial space absorbed in the last 24 months.

OEA continues active outreach in letting centers of influence know about the product offerings in Oconee County. Oconee's entire selection of product is listed on the county site, state site, regional site and various other mediums to get the message out.

Regarding the TCTC campus, the OEA helped select the site at OITP and helped to craft the idea of a true workforce development campus. The goal is to have this Workforce Development Campus open in August of 2018. The campus will have the new TCTC campus on site that will primarily focus on manufacturing disciplines, it will also have the new Hamilton Career Center on this same campus, the new Adult Education Center will be on this campus and the new economic development office will be on site. This campus is currently in the design phase with McMillian Pazzan Smith and Tre-hel.

OEA continues to play a lead role on the workforce development front by working with TCTC, K-12, Clemson and many others to overcome the skills gap in our area. OEA staff play an active role by sitting on the boards of Worklink, Voc Rehab, PACE, Hamilton Career Center, Oconee Business and Education Partnership, AOP showcase and other task forces to work on workforce development initiatives.

2015 also saw the rollout of an exciting new program - #MadeInOC. The Made in Oconee County initiative is an effort to tell the story and further the conversation of the manufacturing sector in Oconee County, South Carolina. This initiative is staff's effort to raise the visibility of the manufacturing industry, while bridging the gap between manufacturing facilities and the school system to highlight diverse employment opportunities for our students as well as ensure local manufacturers have access to skilled local talent.

In recognition these wonderful efforts, the OEA and Oconee received due recognition. OEA was selected as one of the top micropolitan economic development groups in the United States by Site Selection Magazine. OEA achieved status for Oconee County as an ACT "Work Ready Certified Community." OEA was recognized for their recruitment efforts by Expansion Solutions magazine within the Metals fabrication industry by achieving a "Award of Excellence." OEA and Oconee County was selected as the No. 8 top performing Micropolitan out of 576 in the United States for the economic development successes. The Oconee Industry and Technology Park was selected as one of the "Best Industrial Parks" in the Southeast by Southern Business & Development Magazine.

Staff foresees that the successes of 2015 will be continued into 2016 as various projects are underway. The Hartwell Village Project will begin to go vertical in the first part of 2016. This exciting project will bring with it over 300,000 square feet of new commercial opportunities, a new hotel and a new movie theater. Along with that, it will invest over \$30 million dollars and create over 300 new jobs. This project will be built out over a two year span. Project Mackinaw will announce and start construction in late Q1 or early Q2. This BMW supplier selected Oconee to bring to be the home of its' new plastic injection molding process and with it invest over \$15 million in capital investment and create over 80 new jobs. This new facility will be on the 300,000 sq. ft. PAD inside OITP. Project Thermal will announce and start construction in late Q1 or early Q2. This new manufacturer will put into place around \$4 million dollars in capital investment and hire around 30 new jobs. It will

locate on the 50,000 sq. ft. PAD inside OITP and build a 30,000-sq. ft. structure. Project Eagle is an existing manufacturer in Oconee that will announce its expansion and put into place an additional \$1.5 million dollar capital investment and create 33 new jobs. Project Switch is an existing manufacturer in Oconee that will announce its expansion in Q2 and put into place an additional \$2.5 million in capital investment and create at least 25 new jobs.

Oconee should also see good news out of several other projects that will bring new jobs and investments in 2016. By looking at the pipeline it will be a strong year on the industrial front.



Summary

In closing, I would personally like to thank the Oconee County Council, elected officials and Oconee County employees for the job they do for this County, our citizens and our visitors. As is obvious in this report, we have come a long way in accomplishing the goals set forth by Council. This can be attributed to the commitment we've made.

To our Council, I am grateful for the insight and vision each of you has, and for the leadership you provide. The goals and objectives you have set define the priority of this Council: a better way of life for all Oconeeans.

While facing the challenges of the day-to-day, we have managed to keep an eye on the future, and have continued to utilize every asset to the best of our ability to continue on this path of success. I am extremely proud of what this organization has achieved, and I know we can keep this momentum going.

I am proud of what we have done.

I am committed to what we are doing.

I am incredibly excited about where we are going.

STRATEGIC PLANNING

OCONEE COUNTY CORRIDOR PLAN

COMMUNITY DEVELOPMENT DEPARTMENT

STRATEGIC PLANNING RETREAT 2014

WHAT IS A CORRIDOR PLAN?

- **Analysis** of the impact resulting from the interplay between land uses, transportation systems and growth along a route
- Analysis is used to **define a vision for future growth** and development along corridor
- Used to **develop and implement policies** that establish a framework **that align** investment, and development patterns with the established vision.

STRATEGIC PLANNING RETREAT 2014

PLAN COMPONENTS

- Inventory and analysis of existing conditions
- Define a vision for the future
- Policy recommendations
- Implementation strategies

STATISTICS PLANNING REPORT 2016

10

MAJOR CORRIDORS IN OCONEE COUNTY

- Based on the direction of County Council, staff has identified three primary transportation routes to be considered for the adoption of corridor plans:
 - US Highway 123/Clemson Blvd,
 - SC Highway 11
 - SC Highway 59, Fair Play, I-85 Exits 2, 4
- Secondary corridors to consider in the process
 - US Highway 123 into Westminster
 - SC Highway 28
 - SC Highway 176
 - SC Highway 130
 - A number of nodes (intersections)

STATISTICS PLANNING REPORT 2016

11

US HWY 123/CLEMSON BLVD

STRATEGIC PLANNING RETREAT 2015

3

US HIGHWAY 123: INVENTORY OF CONDITIONS

- Initial study area - between Clemson and Seneca
- Major regional corridor and route of transportation in Oconee County



STRATEGIC PLANNING RETREAT 2015

4

US-123; EXISTING CONDITIONS



STRATEGIC PLANNING REPORT 2018

7



STRATEGIC PLANNING REPORT 2018

8



STRATEGIC PLANNING RETREAT 2016

17



STRATEGIC PLANNING RETREAT 2016

18



STRAVING PLANNING REPRESENTATIVE

11



STRAVING PLANNING REPRESENTATIVE

12



STRABER PLANNING FOREST 2014

13



STRABER PLANNING FOREST 2014

14



STRATEGIC PLANNING RETREAT 2015



STRATEGIC PLANNING RETREAT 2015

US 123: ITEMS OF CONSIDERATION

Assets (+)

- Clemson University
- Transportation
- Commercial development
- Connectivity
- Seasonal visitors for Clemson sporting events
- Development potential
- Tourism Destination

Liabilities (-)

- Lack of zoning and overlay districts
- Clemson-owned property
- Existing rail right-of-way
- Billboards and other signage
- Lack of bus transit stops

STRATEGIC PLANNING RETREAT 2016

17

US 123: VISION OF THE FUTURE

- Establish economically diverse gateway
- Encourage a mix of land uses by regulating the use, form, design, and compatibility of development
- Integrate public transportation within new development
- Establish design standards that display the qualities of *Appalachian Rustic Elegance*

STRATEGIC PLANNING RETREAT 2016

18

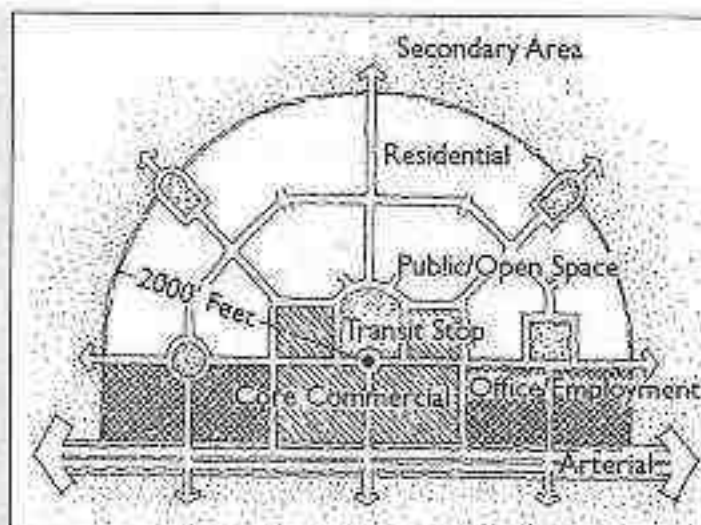
US 123: DEVELOPMENT POLICIES

- Encourage Mixed-Use:
 - Higher Density
 - Small lot size, zero lot lines
 - Integration of diverse housing types and commercial uses
- Improve Connectivity
 - Incorporate bus stop within new development
 - Shared parking
- Aesthetics
 - Appalachian Rustic Elegance
 - Signage – monument, limited height, limit off-premise, gateway and way finding
 - Buffering and landscaping

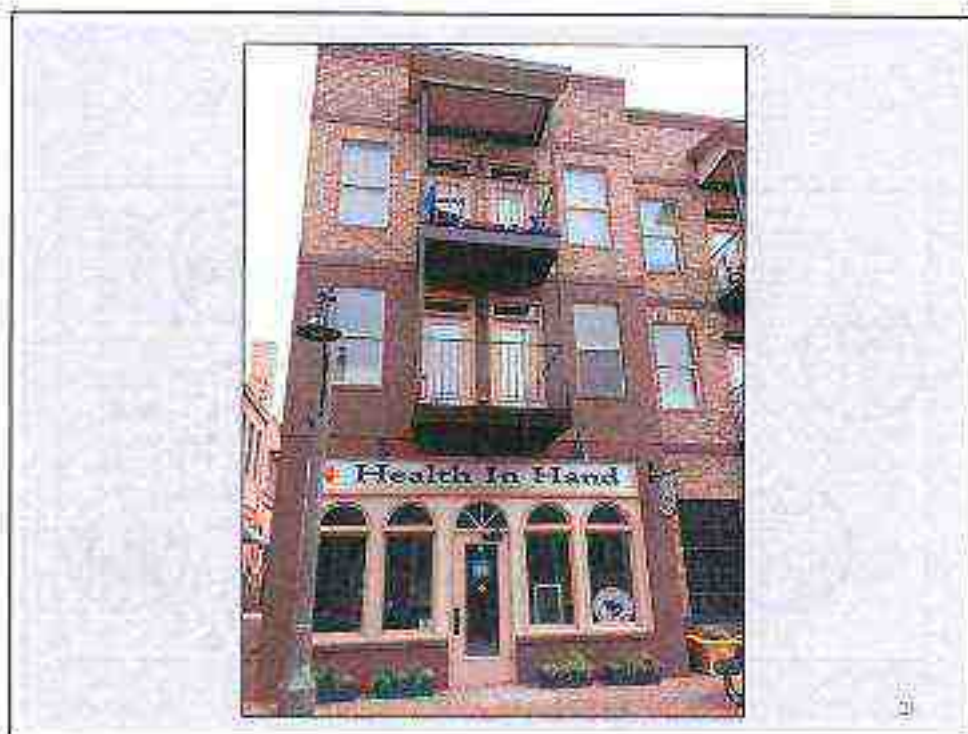
STRATEGIC PLANNING/PERMIT 2016

19

ENCOURAGE MIXED USE



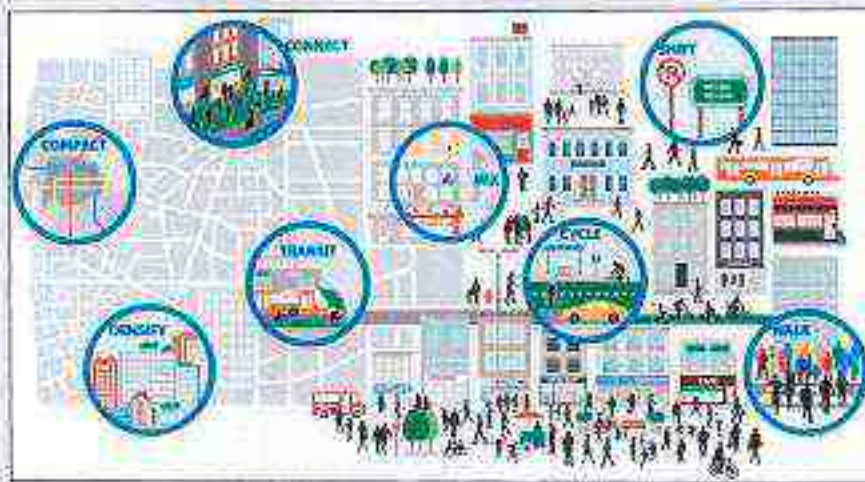
20



ASPECTS OF MIXED-USE

- Housing that fills an unmet need
- Provides amenities and transportation
- Requires the appropriate type of tenants and quality structures
- Architecture that creates a sense of place

IMPROVE CONNECTIVITY



STRATEGIC PLANNING REPORT 2014

25

AESTHETICS



STRATEGIC PLANNING REPORT 2014

26



STRATFORD PLANNING RETREAT 2016

12

SC HIGHWAY 11

STRATFORD PLANNING RETREAT 2016

13

SC HIGHWAY 11: INVENTORY OF CONDITIONS

- Scenic views
- Lake access
- Connecting access of I-85 to Waindia, Westminster, West Union, Lake Keowee, Pickens
- Gateway to South Carolina
- Limited Regulations



STRATEGIC PLANNING REPORT 2016

27



STRATEGIC PLANNING REPORT 2016

28





SC HIGHWAY 11: ITEMS OF CONSIDERATION

Assets (+)

- Scenic views
- Natural landscape
- Lakes/recreation
- Gateways
- Connectivity
- Sewer South
- Industrial/Technology Park
- Agriculture
- Interstate 85
- Exit 1

Liabilities (-)

- Billboards and other signage
- Development on areas of conservation
- Unsuitable land-uses
- Damaging views
- Increased traffic concerns
- Interstate 85
- Major thoroughfare
- Limited land development standards

SC HIGHWAY 11: VISION OF THE FUTURE

- Protection of natural landscape and scenic views
- Encourage appropriate land-uses in suitable areas
- Promote agriculture-related activities and operations
- Establish design standards for future commercial development
- Plan envisioned to be implemented in three sections: I-85/Southern Oconee; Northern Oconee; Walhalla Region

SC HIGHWAY 11: DEVELOPMENT POLICIES

- **Preservation and Promotion of Natural Resources:**
 - Cluster Development & Traditional Neighborhood designs, where appropriate
 - Small lots, higher density, green space
 - Neighborhood scale lot standards
 - Encourage agricultural and conservation zoning, where appropriate
 - Lower density, larger lot size
- **Focused Growth:**
 - Encourage commercial and industrial development within nodes and established parks
- **Aesthetics:**
 - Buffering and landscaping
 - Signage – monument, limited height, no off-premise
 - Appreciation Rustic Elegance

STRATEGIC PLANNING REPORT 2015

37

FOCUSED GROWTH



STRATEGIC PLANNING REPORT 2015

38

HWY 11 - HWY 28



STRATEGIC PLANNING DEPARTMENT

39

HWY 11 - HWY 28



STRATEGIC PLANNING DEPARTMENT

40

HWY 11 - HWY 24



STRATEGIC PLANNING REPORT 2014

41

PRESERVATION OF LAND



STRATEGIC PLANNING REPORT 2014

42

Before



STRATEGIC PLANNING REVISIONS

43

After



STRATEGIC PLANNING REVISIONS

44



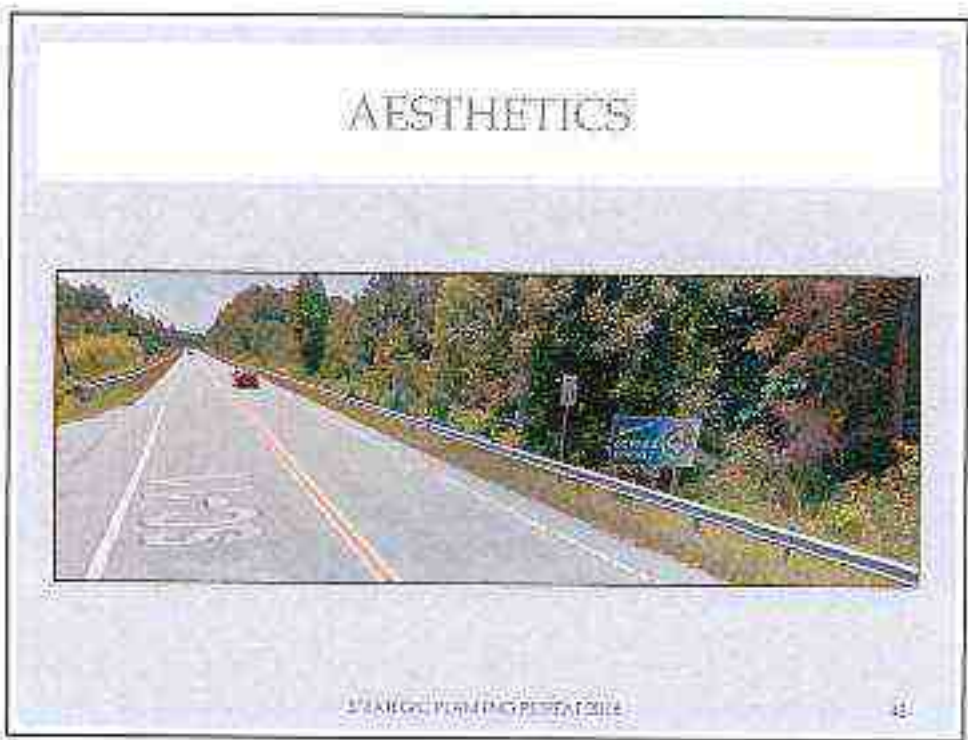
STRATEGIC PLANNING RETREAT 2016

45



STRATEGIC PLANNING RETREAT 2016

46





GEORGE COUNTY PLANNING RETREAT SIGN

49



GEORGE COUNTY PLANNING RETREAT SIGN

50





STRATEGIC PLANNING RETREAT 2016

53



STRATEGIC PLANNING RETREAT 2016

54

SC HWY 59, FAIR PLAY, EXITS 2 & 4

STRATEGIC PLANNING REPORT 2016

55

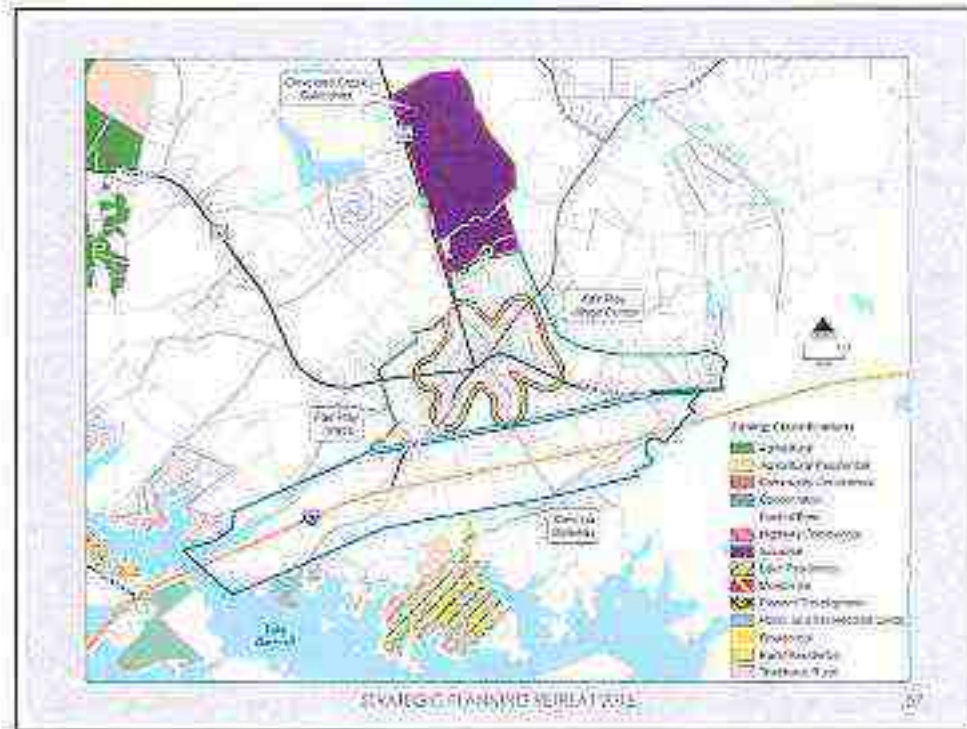
SC HIGHWAY 59: INVENTORY OF CONDITIONS

- Connecting I-85 and Fair Play to Seneca
- Land uses
- Lake Hartwell
- Carolina Gateway Subdistrict
- Fair Play Village Subdistrict
- Fair Play Village Center
- Industrial District



STRATEGIC PLANNING REPORT 2016

56



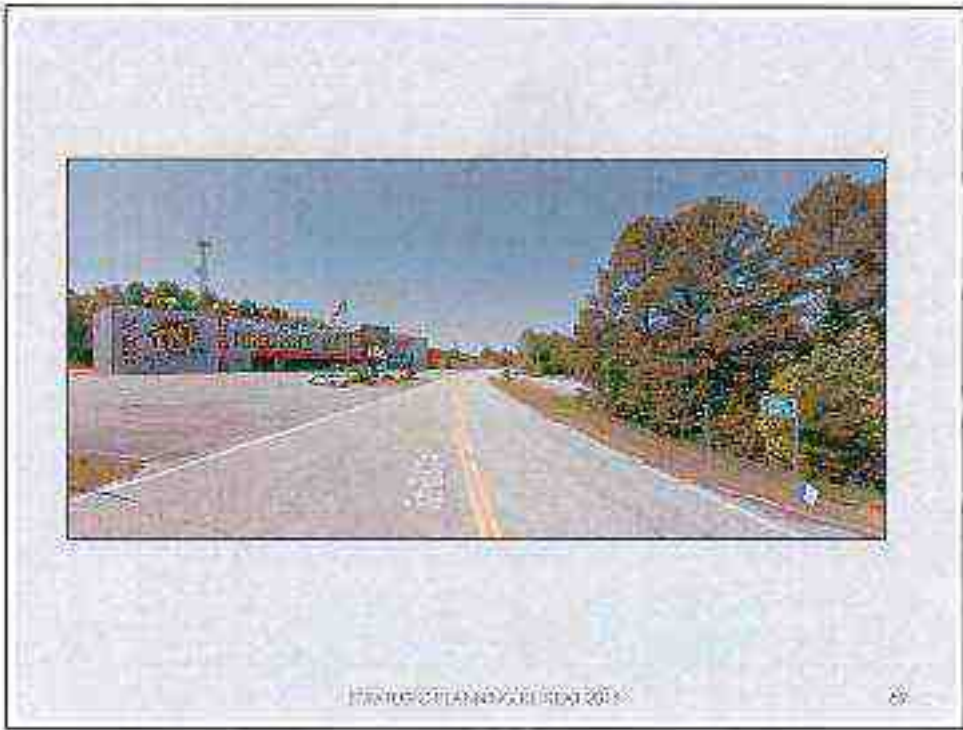
SC HIGHWAY 59: ITEMS OF CONSIDERATION

Assets (+)

- Connectivity between I-95 and Seneca
- Fair Play as a town center/hub for commercial
- Industrial District for development and job creation
- Agriculture-related activities and operations
- Exits 2 & 4
- Sewer South & Expansions
- **Available Land**

Liabilities (-)

- Minimal Standards:
 - Existing overlay districts
- Limited retail and commercial in village node
- Incompatible uses
 - Lack of policy
- Balance between industrial center and village center in terms of traffic impacts
- **Available Land**



SC HIGHWAY 59: VISION OF THE FUTURE

- Improve aesthetic value of residential and commercial development
- Protect agriculture-related activities and operations
- Promote industrial/commercial development while maintaining rural village character
- Establish design standards for future commercial development
- **Vision will be impacted by Sewer South**
 - **How will we define that impact?**

STRATEGIC PLANNING REPORT 2014

11

SC HIGHWAY 59: DEVELOPMENT POLICIES

- Aesthetics
 - Application Rustic Elegance
 - Buffering and landscaping
 - Signs - monument, front height, front setbacks
- Focused Growth
 - Designate future commercial & industrial centers
- Connectivity
 - Shared parking
 - Sidewalks
 - Implement form-based code into overlay
- Preservation and Promotion of natural and agricultural resources
 - Village
 - Higher density, smaller lots, green walls, sidewalks
 - Agricultural and conservation zoning
 - Lower density, larger lots, etc.

STRATEGIC PLANNING REPORT 2014

12

AESTHETICS



STRATEGIC PLANNING PRESENTATION

65



STRATEGIC PLANNING PRESENTATION

61

AESTHETICS



STRATEGIC PLANNING REPERAL 2011

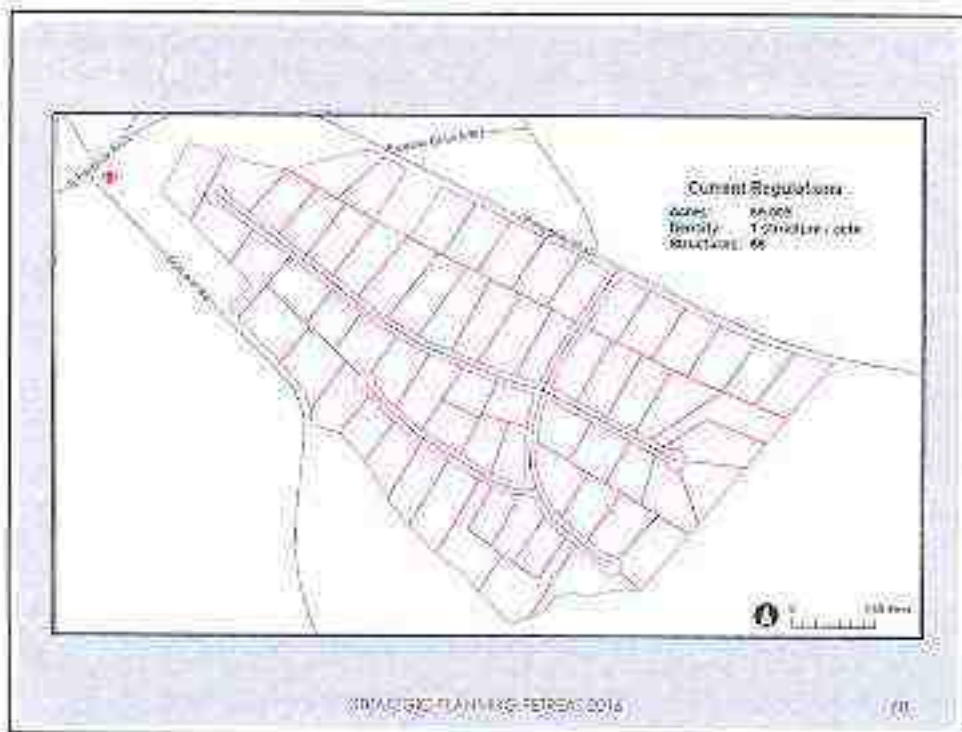
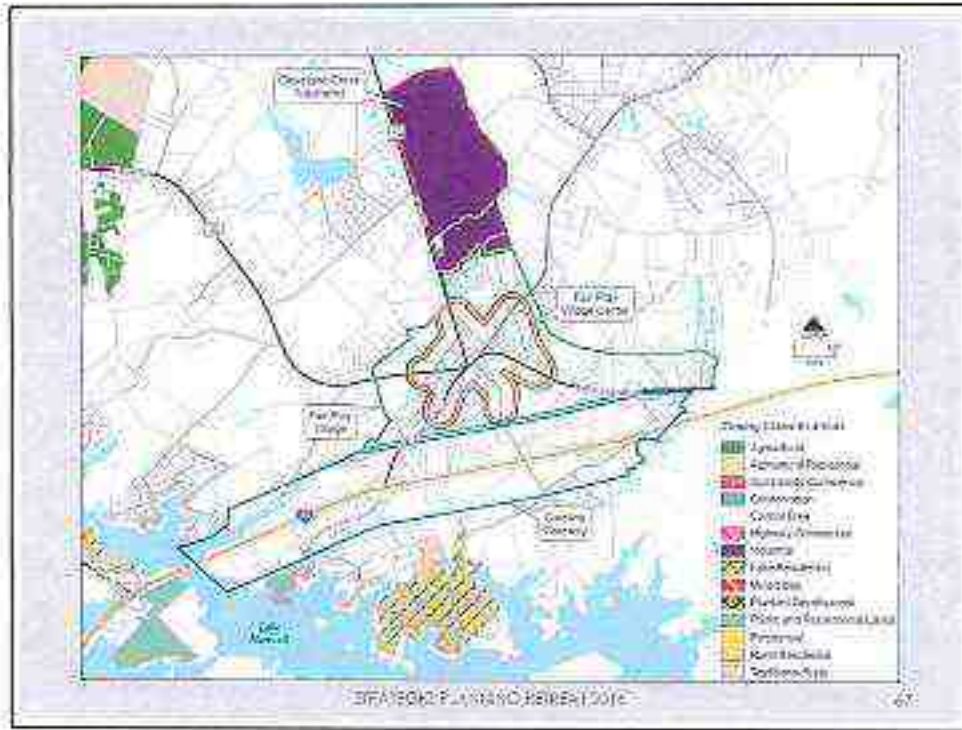
68

FOCUSED GROWTH

- Directing growth away from sprawl patterns of development
- Focusing on existing and new compact, mixed-use centers in priority transportation corridors
- Builds growth capacity
- Increases property values
- Reduces the growth in traffic congestion

STRATEGIC PLANNING REPERAL 2011

69





Single Cluster 1



TRAFALGAR PLANNING REPORT 2016

71

PRESERVATION OF LAND

- Scenic open space and farmland are valuable assets to Hwy 59 region and Oconee County



TRAFALGAR PLANNING REPORT 2016

72



STRATEGIC PLANNING REPRESENTATION

73



STRATEGIC PLANNING REPRESENTATION

74



SHARED BIWAY, RIVERVIEW 2014

75



SHARED BIWAY, RIVERVIEW 2014

76



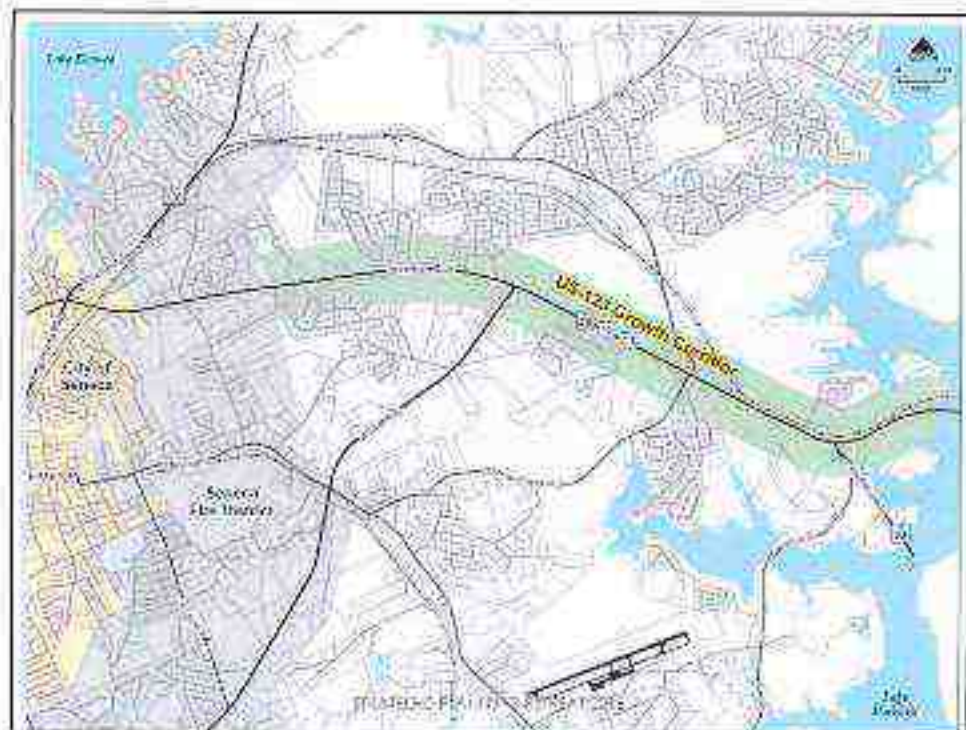
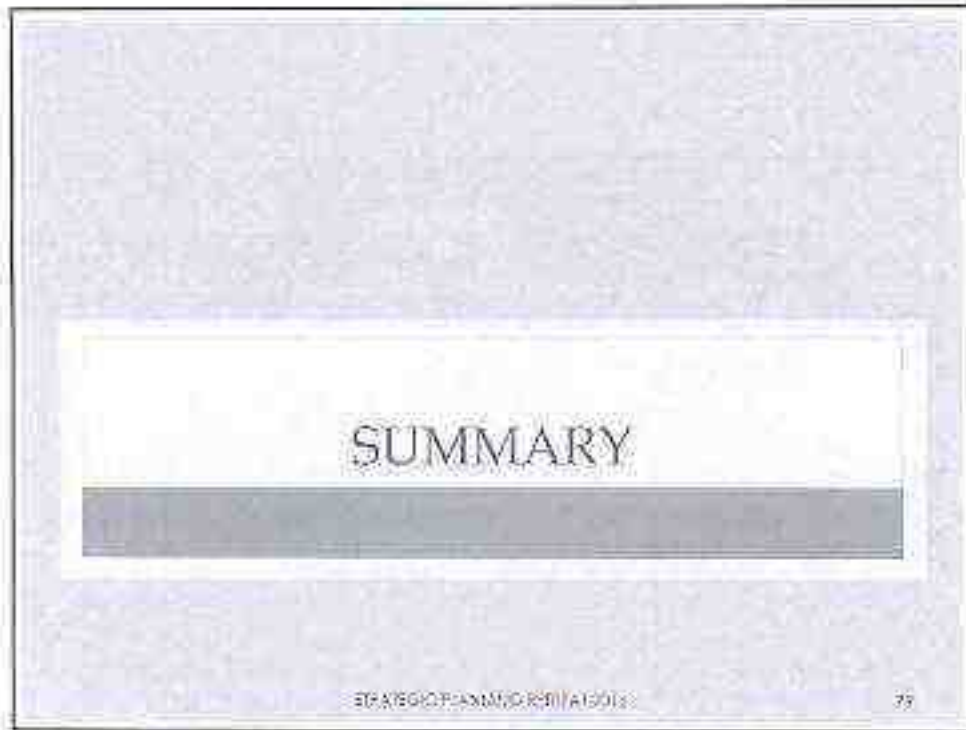
STRATEGIC FUNDING INITIATIVE

//



STRATEGIC FUNDING INITIATIVE

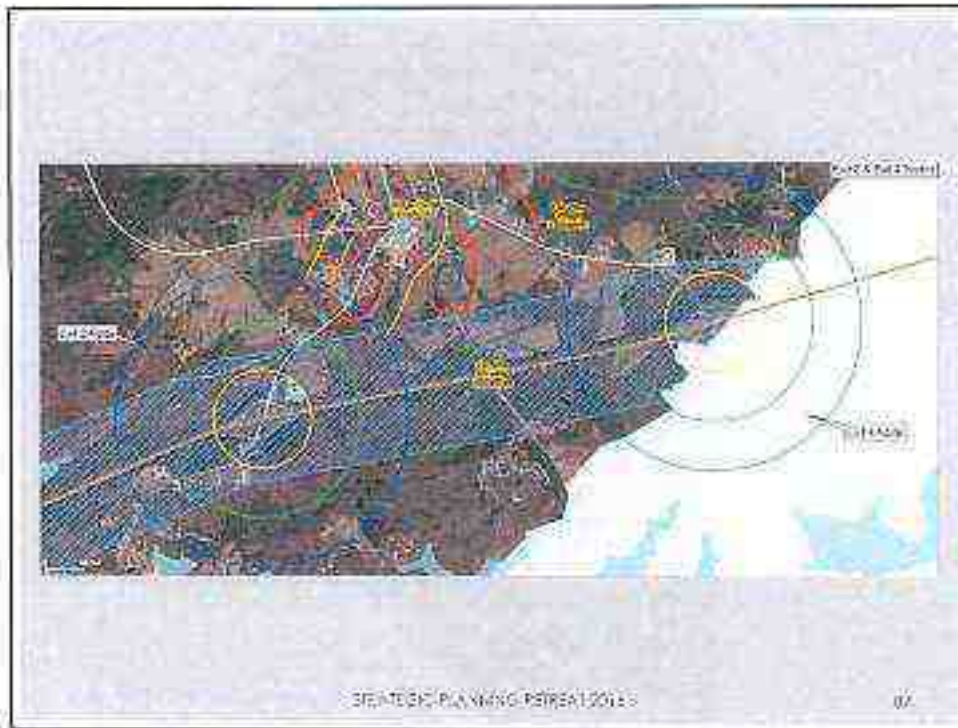
176











NEXT STEPS

- Develop an Overlay for each corridor
 - Framework:
 - Hwy 11 – Sub-districts – North, Middle, South, Nodes
 - Hwy 123 – Single overlay
 - Hwy 69 – Sub-districts – 69 & amend existing I-85 overlay sub-districts of Village & Carolina Gateway
 - Zoning – Targeted Euclidean, Form-based principles, Density, Lot Size, Incentives
 - Appalachian Rustic Elegance
 - New Policies
 - Growth Areas, Cluster Development, Corridor Planning
 - Public Engagement through community meetings to receive input
 - **Nothing New**

ACTION

- Staff recommends that Council consider adopting this project as one of Council's strategic goals for 2016:
 - US Highway 123/Clemson Blvd
 - SC Highway 11
 - SC Highway 59, Fair Play, I-85 Exits 2, 4
 - Staff to work with independent consultant and the County Attorney to draft the ordinance revisions for Commission/Council review.
 - County Council review, consider, and approval for implementation

QUESTIONS?

Dean Hybl

Ten at the Top
Executive Director since January 2010



Since becoming the first full-time Executive Director of the fledgling organization in 2010, Dean has helped Ten at the Top earn regional and national recognition for developing connections, fostering collaboration and building regional capacity across communities and stakeholder groups.

During his initial year with TATT, Dean directed the effort to develop the Our Upstate Vision, which was created through the input of more than 10,000 Upstate residents. He also helped develop the Upstate Information Hub, which serves as a comprehensive events and resources portal for the region. He has spearheaded efforts to grow regional networks and partnerships around a wide array of issues including transportation, child well-being, education, entrepreneurial support services, workforce development, air quality and land use planning, just to name a few. Dean has been recognized multiple times by Greenville Business Magazine as one of Greenville's 50 Most Influential Business Leaders. In 2011, TATT was recognized as a finalist for the Alliance for Regional Stewardship's Organizational Champions Award. He currently serves as co-chair of Greenville CAN and has been on the board of directors for Community Works Carolina and the Greater Greer Chamber of Commerce. He has also served on the National Advisory Board for the Alliance for Regional Stewardship.

Prior to joining TATT, Dean spent five years promoting regional collaboration in the Central Florida area through myregion.org. In addition to serving as the primary Program Manager for their "How Shall We Grow?" initiative, he also coordinated initiatives on environmental preservation, improving science and math education, arts and culture, economic development and social services. In addition, Dean spent 15 years in college athletics as a Sports Information Director and Assistant Director of Athletics, including six years at Hampden-Sydney College and nine years at Rollins College. He also worked for a private public relations firm and is the founder of the website Sports Then and Now.

Originally from Keysville, Virginia, Dean is a graduate of James Madison University. He and his wife, Suzy, have two children—Bethany and Nate—and currently reside in Greer.

PUBLISHER'S AFFIDAVIT

**STATE OF SOUTH CAROLINA
COUNTY OF OCONEE**

OCONEE COUNTY COUNCIL

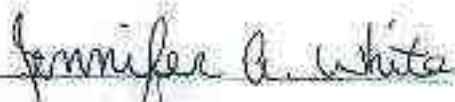
IN RE: Strategic Planning Retreat- Friday, Feb. 5, 2016

BEFORE ME the undersigned, a Notary Public for the State and County above named, This day personally came before me, Hal Welch, who being first duly sworn according to law, says that he is the General Manager of **THE JOURNAL**, a newspaper published Tuesday through Saturday in Seneca, SC and distributed in **Oconee County, Pickens County** and the Pendleton area of **Anderson County** and the notice (of which the annexed is a true copy) was inserted in said papers on 01/15/2016 and the rate charged therefore is not in excess of the regular rates charged private individuals for similar insertions.



Hal Welch
General Manager

Subscribed and sworn to before me this
01/15/2016



Jennifer A. White
Notary Public
State of South Carolina
My Commission Expires July 1, 2024

JENNIFER A WHITE
NOTARY PUBLIC
State of South Carolina
My Commission Expires July 1, 2024

TRANSPORTATION

AUTOS FOR SALE

SENECA AUTO SALES
888-1100



05 KIA AMANTI
119K Leather Loaded - \$6995
Buy Here-Pay Here
542 W N 1st Street
Open Saturdays - 9:30am-2pm

LEGAL NOTICES

LEGALS

INVITATION TO BID

The School District of Oconee County, Seneca, South Carolina will receive sealed bids from qualified companies for Cargo Vans until 2:00 P.M. Thursday, January 28, 2016 when bids will be opened publicly and read aloud. Bid documents and specifications may be obtained from the Purchasing Services Department located at 125 South Cove Rd. Seneca, SC 29572 or e-mail wayne.p@oconee.k12.sc.us. \$3000 reserves the right to reject any/all bids and to waive any informalities and technicalities so as to purchase in the best interest of the school district.

NOTICE OF FORECLOSURE SALE

Pursuant to a Decree of Court in the case of Community First Bank, Inc. vs. G. Tom Sandler, et al., C.A. No. 2015-CP-27-614, the Clerk of Court for Oconee County, will sell, on behalf of Plaintiff Community First Bank, Inc., on January 4, 2016 at 11:00 a.m., at public auction to the highest bidder at the Oconee County Courthouse, in Wabasha, South Carolina, the following described real estate: All that certain piece, parcel or lot of land with any improvements thereon or hereafter placed thereon, situate, lying and being in the State of South Carolina, County of Oconee, Chetopa Township containing One and Six Hundred Thirty One thousandths (1,630) acres, more or less, on Hickory Ridge Drive, as shown and more fully described on a plat thereof prepared by R. Jay Cooper, P.E. & L.S. #4682, dated August 23, 1990 and recorded in Plat Book A 628, at Page 10, Records of Oconee County, South Carolina and having the names and bounds, courses and distances as on said plat appear. For a more detailed description, reference is hereby invited to said plat. This conveyance is made subject to any and all right-of-ways and/or easements appearing of record and/or on the premises, any and all protective covenants and restrictions as to the use of the property as may be recorded in the Office of the Registrar of Deeds for Oconee County, South Carolina including, but not limited to, those protective covenants and restrictions as recorded in Deed Book 751, at Page 9, Records of Oconee County, South Carolina; and any and all zoning rules and regulations of any governmental bodies having jurisdiction over the

LEGAL NOTICES

LEGALS

2014 IN DEED BOOK 2007 AT PAGE 325.

CURRENT ADDRESS OF PROPERTY:
Lot 31, Hidden Falls of Keowee, West Union, SC 29596
TMS: 177-05-01-020

TERMS OF SALE: The successful bidder, other than the Plaintiff, will deposit with the Clerk of Court, at conclusion of the bidding, five percent (5%) of his bid, in cash or equivalent, as evidence of good faith, same to be applied to the purchase price in case of compliance, but to be forfeited and applied first to costs and then to the Plaintiff's debt in the case of non-compliance. Should the low and highest bidder fail to comply with the other terms of the bid within thirty (30) days, then the Clerk of Court may re-sell the property on the same terms and conditions on some subsequent Sales Day (at the risk of the said highest bidder). Default judgment being demanded, the bidding will not be closed on the day of sale but will remain open for a period of thirty (30) days as provided by law. Plaintiff is demanding a deficiency; the Plaintiff may waive any of its rights, including its right to a deficiency judgment, prior to sale. Purchaser to pay for documentary stamp on the Deed. The successful bidder will be required to pay interest on the amount of the balance of the bid from date of sale to date of compliance with the bid at the rate of 6% per annum. The sale shall be subject to taxes and assessments, existing easements and restrictions, easements and restrictions of record and any other senior encumbrances. In the event an agent of Plaintiff does not appear at the time of sale, the within property shall be withdrawn from sale and sold at the next available sales date upon the terms and conditions set forth in the Judgment of Foreclosure and Sale of such terms as may be set forth in a supplemental order.

Oconee County Clerk of Court
Clerk of Court for Oconee County
Brook & Scott, PLLC
3800 Fernandina Road, Suite 110
Columbia, SC 29210
Attorneys for Plaintiff
14-12173

The Oconee County Council will hold a Strategic Planning Retreat on Friday, February 5, 2016 beginning at 9:00 a.m. in Council Chambers to establish short and long term goals.

Got too much stuff?
Use the Classifieds!



Sell items under \$100

FREE



Visit

www.upstatetoday.com

Then click **CLASSIFIEDS.**

Private party only.
Only 1 Item per ad.
Limit 2 ads per week.
Must submit ad online.


**Oconee County
Council**


Oconee County
Administrative Offices
515 South Pine Street
Wallula, SC 29691

Phone: 864-364-5136
Fax: 864-710-1026

Email:
info@oconee.org

Edna Cammick
District I

Wayne McCall
District II

Paul Cain
Chairman
District III

Joel Thrift
District IV

Reginald T. Dexter
District V



.....LEGAL AD.....

**PLEASE ADVERTISE IN THE NEXT ISSUE
OF YOUR NEWSPAPER**

The Oconee County Council will hold a Strategic Planning Retreat on Friday, February 5, 2016 beginning at 9:00 a.m. in Council Chambers to establish short and long term goals.

Beth Hulse

From: Beth Hulse
Sent: Thursday, January 14, 2016 2:25 PM
To: Beth Hulse; classadmgr@upstatetoday.com
Subject: 2/5/16 Strategic Planning Retreat
Attachments: 011416 - Council-2016 Strategic Planning meeting.docx

Please run at your earliest convenience.
Thanks.

Elizabeth G. Hulse, CCC
Clerk to Council
Oconee County Administrative Offices
415 South Pine Street
Walhalla, SC 29691
864-718-1023
864-718-1024 [fax]
bhulse@oconeesc.com
www.oconeesc.com/council

Beth Hulse

From: Beth Hulse
Sent: Thursday, January 14, 2016 2:25 PM
To: Beth Hulse; Carlos Galarza; Chad Dorsett; DJM News Editor; Fox News; Greenville News (localnews@greenvillenews.com); Kevin; Ray Chandler; Steven Bradley (sbradley@upstatetoday.com); Westminster News / Keowee Courier (westnews@bellsouth.net); WGOG (dickmangrum@wgog.com); WSPA TV - Channel 7 (assignmentdesk@wspa.com); WYFF 4 News
Subject: Oconee County Council Planning Retreat

The Oconee County Council will hold a Strategic Planning Retreat on Friday, February 5, 2016 beginning at 9:00 a.m. in Council Chambers to establish short and long term goals.

Elizabeth G. Hulse, CCC
Clerk to Council
Oconee County Administrative Offices
415 South Pine Street
Walhalla, SC 29691
864-718-1023
864-718-1024 [fax]
bhulse@oconeesc.com
www.oconeesc.com/council